

# Cllr Lorna Dupré

## MONTHLY REPORT MARCH 2025

---

### LOCAL GOVERNMENT REORGANISATION

All principal local authorities in Cambridgeshire and Peterborough need to respond to the Government no later than Friday 21 March to outline what they are considering for new, larger, unitary councils for our area.

The criteria continue to include an expectation that the new councils will cover populations of at least 500,000 unless there are special circumstances; and that existing district council boundaries will be the building blocks, again unless a strong argument can be made against this.

A further submission will need to be made to the Government in the autumn.

There will be advantages to moving to a unitary council system, not least more clarity and accountability over who is responsible for services such as street lights or waste. But it's clear that the Government is wanting a 'quick and dirty' solution, rather than taking the time—and consultation—to do it properly.

---

### COUNCIL SHORTLISTED FOR FOUR NATIONAL AWARDS

Cambridgeshire County Council has been shortlisted as a finalist in four categories of the Local Government Chronicle Awards.

- Community involvement: two projects from the Fenland Youth Work Network supporting young people aged 11-18 who are at risk of serious violence, exploitation, and involvement in county lines.
- Health and social care: Cambridgeshire Shared Lives Domestic Violence and Sexual Abuse Project, working with survivors of domestic abuse with learning disabilities and/or autism.
- Future places: innovative connectivity projects including a private 5G Open Radio Access Network (RAN), development of an augmented reality experience, and enhanced mobile coverage analysis.
- Innovation: Cambridgeshire's 'Dig Once' policy, integrating fibre ducting into new transport infrastructure projects, resulting in a large CO<sub>2</sub> reduction and significantly less disruption to road users.

The winners will be announced at a ceremony on 11 June.

---

## **ASSETS & PROCUREMENT**

### **Old Shire Hall**

The sale of (old) Shire Hall in Cambridge is on the agenda of the Assets & Procurement Committee for Friday 7 March.

The premises was put back on the market for disposal in February 2024, and attracted fifteen bids. Following evaluation this number was reduced to a shortlist of four.

An exclusivity period with Bidder A ended in October 2024 without a sale being completed. Subsequent discussions took place with the other bidders on the shortlist. An unconditional long leasehold bid from Bidder E has been recommended for acceptance, together with draft Heads of Terms.

Pending Committee approval, the Heads of Terms will be agreed, and an exclusivity period will be entered with Bidder E, with a view to exchange contracts within this three-month period.

### **County farms**

I attended an absolutely packed annual meeting of county council farm tenants in Landbeach early last month. The county council's rural estates team introduced the event saying that the council is looking for innovation and a reduction in its carbon footprint.

Martin Lines from Nature Friendly Farming Network, who farms near St Neots, spoke about improving farms' bottom line, biodiversity, and carbon footprint, and illustrating the multiple benefits of a nature-friendly approach to how he farms.

We need to eat less meat, but better meat, he says. And climate change is the biggest challenge. "We need to change agricultural practices, including a shift towards regenerative system thinking."

Many farmers have been affected by hare coursing and are concerned how vulnerable rural communities are.

---

## **CHILDREN & YOUNG PEOPLE**

### **Witcham and Mepal children in free breakfast club pilot**

Fourteen primary schools across Cambridgeshire are set to run a free breakfast club as part of the pilot for a new Government scheme in April. 750 schools across the country have been selected to take part in an 'early adopters' scheme which will test the delivery of the programme before it is implemented nationally.



The pilot is set to launch in April and will run until July, before it is introduced across the UK. The schools chosen for the pilot will offer a free breakfast to all pupils and at least 30 minutes of childcare before school. The fourteen Cambridgeshire schools selected are:

- Buckden CofE Primary School, St Neots
- Peckover Primary School, Wisbech
- Mepal and Witcham CofE Primary School, Ely
- Hartford Junior School, Huntingdon
- Hartford Infant and Pre School, Huntingdon
- Stapleford Community Primary School, Cambridge
- Upwood Primary Academy, Huntingdon
- St Laurence Catholic Primary School, Cambridge
- Great Wilbraham CofE Primary School, Great Wilbraham
- Meldreth Primary School, Royston
- The Spinney Primary School, Cambridge
- Kings Hedges Primary School, Chesterton
- Northborough Primary School, Peterborough
- St John Henry Newman Catholic VA Primary School, Peterborough

Education Secretary Bridget Phillipson said that the free breakfast clubs would help break the link "between background and success" for families.

The scheme has been welcomed by the headteachers' union, though they fear that the funding allocated by Government will fall short of the cost, and have said it is 'crucial' that concerns are addressed before the national rollout.

---

## **COMMUNITIES, SOCIAL MOBILITY & INCLUSION (COSMIC)**

### **Security support for domestic abuse survivors**

The council has renewed a scheme which helps survivors of domestic abuse to feel safer and more secure in their own homes.

The scheme provides additional security measures which can delay or prevent a perpetrator from entering a property. It supported 525 people across Cambridgeshire and Peterborough between April 2023 and March 2024.

Measures offered depend on the level of risk, and may include window alarms, additional bolts, lock changes, security advice, video doorbells, dummy cameras, and response lights. The service is available for all types of housing, whether owned, privately rented, or social housing.

The contract will be funded by a Safe Accommodation grant from the Ministry for Housing, Communities and Local Government (MHCLG), enabling the council to carry out its statutory duty.

## Benefits of play

The committee received a report last month on the benefits of play, which concluded: "five place-based teams within the Communities service will continue to provide support to community organisations, including town and parish councils, who have an ambition to create or update spaces for young people. This support extends to training in good practice in engaging young people throughout the process."

---

## ENVIRONMENT & GREEN INVESTMENT

### Badger damage to barrier banks

Further to the issue with the Cradge Bank at Sutton Gault, I have followed up with the Environment Agency reports of badger damage to the banks at Pymoor. This is the response I received on 28 February.

"Thank you for your email of 12 February 2025 regarding the badgers on the South Level Barrier Bank (SLBB). I fully understand your concerns and can assure you that our Asset Performance (AP) and Field teams have been working on this issue for a number of years. Following on from your phone conversation with me earlier this week please see the details below of what work has and is due to be conducted to rectify this issue.

I can confirm that we are aware of the badger setts within the embankment, adjacent to the Coveney Habitat area. Over several years, we have been working to reduce the number of setts within the SLBB and the likelihood of further setts becoming established. We have prioritised the works so far using available finance, resource and advice from a specialist badger ecologist to exclude the badgers and repair the damaged areas where activities have had the greater impact on the embankment. Works to date have included the destruction of 58 setts, installation of 950m of above ground predator fencing, 150m of trench sheet piles driven below ground, 2094m of buried vertical mesh and 2194m Subterranean barrier to prevent the re-entry by badgers. All these works are Natural England licensable activities.

We have engaged a badger ecologist to undertake a survey and provide the scoping documents to allow a licence application for this year's works. This survey will be undertaken within the next few weeks. Through early engagement we have confirmed this year we will be working to remove the main sett within the area, This will require the construction of an artificial badger sett at the landward toe of the SLBB, to allow us to destroy the existing setts.

Under licensing rules set by Natural England the displacement of the badgers from the embankment can only be undertaken between July and



November. We are planning to undertake the enabling works (construction of the artificial sett) with our contractors during July and August. Once we can demonstrate that the new sett is then being used, we will carry out the displacement from the existing setts within the embankment and install mesh barriers to prevent re-entry.

We will also be looking at an area near Oxlode pits. This is where damage has been caused to badger proof fencing (by unknown persons) which has allowed badgers to enter the badger proof area and dig a single hole into the embankment. This sett will likely be gated, destroyed and fence repaired with no further work required as there is already an established artificial sett associated with this social group of badgers.

Whilst any hole / sett is undesirable within a flood embankment, priority has been given to repair those sections deemed to have the greater impact on the integrity of the defence. Works are programmed, subject to funding and issuing of the required license to repair prioritised lengths again this year. The SLBB is a large embankment with active setts within its widest and strongest point at the base of the embankment. Surveys to date and ongoing monitoring have satisfied us, that there are no immediate concerns with the integrity of the embankment. It is our intention to fully badger proof this length of the SLBB using subterranean mesh within the next 2 years, subject to funding."

### **Drainage on Ely Road Little Downham**

I attended the drop-in session at the new development site next to Old Fir Close at the end of February and am due to meet with representatives of Lindum, Accent, and the county council's Flood & Water and Highways teams in early March.

### **Hare coursing**

I was very pleased indeed to see more arrests in connection with the dreadful and intimidating disorder across Fenland and East Cambridgeshire in January. The Chief Constable has acknowledged that the response at the time wasn't good enough. It's important that the guilty parties are found and brought to justice, and that a strong message is sent and received that this sort of behaviour will not be tolerated.

### **Sunnica update**

There is no programme in place yet for delivery of the Sunnica solar farm. Sunnica have said it will take time to mobilise and prepare. The relevant local authorities believe it is unlikely they will receive any documents for discharge of requirements any time soon—this may not be until 2026. Sunnica needs to start within five years of consent being granted.

Responsibility for the majority of these next steps will be for East Cambridgeshire District Council and West Suffolk Council.

A Battery Fire Safety Management Plan will be required, and this will go to both County Councils to consult with the respective Fire and Rescue Services. Sunnica have yet to confirm the type of battery as new types with different materials are coming to market all the time; this is a key ask when Sunnica start to produce details for submission to discharge requirements. The Health and Safety Executive has stated it does not wish to be a consultee to the Battery Fire Safety Management Plan.

### **Augmented reality at the Corn Exchange**

I took up a fascinating chance last month to take part in a new augmented reality trial at the Corn Exchange in Cambridge.

The project—Cambridgeshire Open RAN Ecosystem—shows how 5G and Open RAN technology can contribute to live entertainment and digital experiences.

When we arrived, we were equipped with a backpack, headset, and headphones. With these, we were able to see a transport exhibition, with a black cab, Delorean, bicycle, and Sinclair C5 appearing in front of us in succession. We could walk round them, climb into them (being very careful about sitting in the seats as *those seats aren't real!*) and use two big control buttons to summon the next vehicle along. The Delorean took off into the air in very spectacular style! We then saw three music performances on the Corn Exchange stage showing how it would be possible to use this technology to present concerts in future.

The difference between virtual reality and augmented reality, I was told, was that virtual reality cuts off your real external environment: you are completely immersed in the world in your headset. With augmented reality, however, we could see the room, the people we were with, and hear what was going on in real life, but with added computer-generated moving imagery.

The trial is one of nineteen across the country funded by government. It's led by Connecting Cambridgeshire and a consortium of technology experts, with support from Cambridge City Council, the Corn Exchange, and the University of Cambridge.

---

## **HIGHWAYS & TRANSPORT**

### **Chain Causeway Sutton**

After the initial rocky start things seemed to be progressing well, until late last week contractors began work on the obstinate piece of highway at the bottom of The America outside Squirrel Cottage. On 26 February I was informed:

"On 26/02/25 at approximately 15:30, we encountered what appears to be a historic void within the carriageway of The America. This large void is adjacent to the UKPN substation, near the layby at the entrance to the village. Over the years, we have routinely patched this section of carriageway as it has repeatedly failed in this localised spot.

We have contacted UKPN who are sending out a site safety engineer to review today. Whilst we wait for the engineer's review, and for UKPN to rectify their construction to allow our works to proceed safely - we will not be excavating or running heavy plant in proximity to the void. As I'm sure you can understand, this complication will cause delays and extension to our programme of works.

We are in the process of safely cordoning off this void to prevent residents, vehicles and plant from getting close - as this is a safety concern with a limited understanding of the extents. Our site team have also informed residents of the issue. We are currently working closely with the contractor to assess the impact on the programme and will provide an updated schedule as soon as possible.

Any necessary extensions to the programme will be communicated to ensure all stakeholders remain informed. Streetworks officers and inspectors are aware of the situation, and updates will be provided as the matter progresses."

Two days later, on 28 February, I was advised by the project manager:

"I was on site this morning with UKPN who have approved our contractor to vacuum excavate the void to expose the issue. This will happen on Monday next week [3 March]. Anglian Water have also attended site as they have a leak in close proximity, which looks to also be part of the problem.

Once we have excavated the void, we will be in a much better position to safely make an assessment.

I appreciate this isn't a definitive answer of a programme extension, but until we fully understand the issue - it would not be sensible to make recommendations.

I hope to have a more conclusive update early next week."

This is at least good news in that it should enable the county council to better understand why repeated repairs near Squirrel Cottage have failed, and Anglian Water to solve their water leak.



## Meanwhile at Hillrow Causeway Haddenham

The road from Haddenham crossroads to Earith Bridge has taken a serious pummelling from the extra traffic using it while Chain Causeway is closed. I have asked whether officers will survey its condition once the route from Sutton to Earith is reopened.

## Fen roads trial

A trial to investigate new and innovative ways to repair soil affected roads is being considered by the council.

£1.5M of external funding has been secured, and an extra £5M of capital funding has been assigned specifically to repair and reconstruct soil affected roads before the end of the next financial year. The £1.5M from Cambridgeshire & Peterborough Combined Authority is for the development, design, and delivery of possible long-term solutions to address roads built over peat soils.

Some of the trial options could include using lightweight recycled products, an 'ultra-low' carbon material, or a technique that involves treating materials on site to improve their strength and durability. The exact processes will be decided on following further design and development work.

The plan is to trial this on the B1099 Upwell Road near March. This is because it is built over peat soils, forms part of Cambridgeshire's rural road network with both heavy vehicle and agricultural traffic making it comparable to a lot of other similar routes, and is due for renewal soon.

If approved, design work including on-site investigations and stakeholder engagement would start in May. The aim is for the trial to begin in summer next year.

## Flood affected roads

Flooding at Mill Lane Little Paxton and other key flood affected roads is being discussed at the Highways & Transport Committee on Tuesday 4 March.

Mill Lane in Little Paxton forms an important link between St Neots, Little Paxton and the A1 trunk road in Huntingdonshire and has two bridges over the River Great Ouse. High rainfall in 2024 led to the road being closed due to flooding on four occasions. These closures were lengthened by the damage to the road surface caused by fast-moving floodwater. In October 2024, the road was repaired and strengthened at a cost of approximately £15,000.

St Neots Flood Action Group have already carried out considerable research into the historic drainage of the area surrounding Mill Lane. Officers from the Flood Risk team met them on site in January along with officers from the Environment Agency. The chair of the Flood Group has identified some small scale works that



could be completed to reduce the frequency and duration of flooding of Mill Lane and these are subject to further investigation.

Work to investigate and address flooding across Cambridgeshire more widely is already under way and St Neots is included within this project. The Environment Agency is also undertaking a *Great Ouse Strategic Intervention Study* to better understand the current and future flood risk from river and surface water sources across the Great Ouse Catchment.

A programme to upgrade electronic flood signage is also under way. The first place to receive this will be Little Paxton, and new signs are also planned for Earith, and for Welney Wash in conjunction with Norfolk County Council. These are all expected to be installed by June.

If agreed, £100,000 will be allocated towards short-term interventions to support flood risk and improved recovery times at Mill Lane Little Paxton, and £150,000 for a high-level options assessment for three key flood affected roads at Little Paxton, the A1123 at Earith, and the B1040 at Whittlesey.

### Highways procurement

The current highways contract in place with Milestone Infrastructure is set to expire on 30 June 2027, with an option for up to five years extension dependent on performance. The contract has not delivered the efficiencies and service levels expected or required by the Council.

The current model of sub-contracting under the contract does not enable value for money to be easily demonstrated and there is a lack of contract options and investment in skills, processes and systems. CDM [Construction (Design & Management)] and health and safety compliance has been poor in the past but is improving. Response times and quality of work are continued concerns.

Based on an assessment of options for the future post-2027 council officers have recommended a mixed economy model which would include:

- In-house delivery for Asset Management, Design, Commercial Management, Client Management, routine maintenance works
- Contract(s) for reactive/cyclical works, emergencies, winter maintenance
- A Professional Services Contract
- Use of Frameworks to deliver planned maintenance and major schemes.

### Highways spending

#### Capital maintenance and improvement works

On Tuesday 4 March the Highways & Transport Committee will consider proposals for spending on capital maintenance and improvements. This includes the additional £8.146M from Government for highways maintenance.

The total capital budget for highways maintenance and improvements in 25/26 is £59.332 million. This is funded through a combination of grant funding and council investment.

Specific items for the Sutton division in the coming year's programme include the following:

- Carriageway reconstruction: Hundred Foot Bank (Little Downham) from junction with footpath 3 to the county boundary
- Reconstruction: Straight Furlong (Pymoor) throughout
- Footway resurfacing and widening: Station Road Sutton from end of houses to industrial park

A full list of proposed capital maintenance and improvement works for Sutton division and the rest of Cambridgeshire can be found at <https://cambridgeshire.cmis.uk.com/ccclive/MeetingsCalendar/tabid/70/c/ViewMeetingPublic/mid/397/Meeting/2350/Committee/62/SelectedTab/Documents/Default.aspx> (Item 7, Appendix A).

### Active travel hierarchies

I reported some months ago that work was being undertaken to create a hierarchy for active travel routes across the county. This will be used to help prioritise maintenance and repairs of routes used by pedestrians and cyclists in future.

The updated hierarchies can be seen on the online map at <https://www.cambridgeshire.gov.uk/active-travel-hierarchy-map> and maps for each district area are also available at <https://cambridgeshire.cmis.uk.com/ccclive/MeetingsCalendar/tabid/70/c/ViewMeetingPublic/mid/397/Meeting/2350/Committee/62/SelectedTab/Documents/Default.aspx> (Item 10, Appendices 6 to 13).

### Mepal to Sutton walking and cycling route

The council plans to carry out further development of options and preliminary design for pedestrian and cycle route improvements between Mepal and Sutton.

### A1421 Witcham Toll to Haddenham crossroads

The County Council recently carried out a survey of all its A-roads, using the International Road Assessment Programme (iRAP). This assesses the potential risks associated with the highways infrastructure and its surroundings, and provides a star rating for each of four different road user types—pedestrians, cyclists, motorcyclists, and vehicle occupants.

Key points from the study are that:



1. The County's older rural A-road network presents the greatest risks to all road user types should collisions occur and is 1-star rated on significant lengths, including on the A10, A141, A142, A505, A605, A1096, A1101, A1123, A1198, A1304 and A1421.
2. Where the A-roads enter a restricted speed limit / zone then the star rating typically increases.
3. The star rating for cyclists on rural A-roads without a segregated cycle facility is generally 1-star. When such a facility is in place, a rating of 3, 4 or 5 stars is generally seen.
4. Where there is no pedestrian facility the iRAP study does not produce a star-rating as it assumes that a pedestrian should not be walking there. iRAP can only score facilities that are provided. It can therefore be assumed that a route without a footway / parallel path that did nonetheless accommodate pedestrian movements would have a *de facto* 'zero-star' rating. The iRAP assessment is helpful in highlighting routes that have no pedestrian provision, although to understand the actual risk of collision, the level of pedestrian usage would need to be understood.

Further information is available on the A1421 from Witcham Toll to Haddenham crossroads. When compared to similar A-roads on the County's highway network, the iRAP awards the A1421 broadly similar star ratings, although there are areas of 1-star rated road within some speed restricted lengths of other A-roads. The pattern of star-ratings on the A1421 in the rural (60mph) stretches is also consistent with those seen elsewhere on the rural A-road network.

The A1421 is currently rated as 1-star in iRAP for cyclists, vehicle occupants and motorcyclists between Haddenham and the A142, and is unrated for pedestrians due to the lack of any facility for them. However, no collision cluster sites have been identified for the A1421 or other routes in Haddenham.

The iRAP assessment suggests 'countermeasures' to improve the star rating of the A1421, with estimated costs and benefit-to-cost ratios. According to the assessment, the interventions with the greatest benefit-to-cost ratio would be raised profile edge lines ('rumble strips' along the edges of the road), and improved curve delineation. Other interventions are listed, with lower ratings. Council officers will use this data to inform the capital programme.

The report also noted the feasibility study by Sustrans commissioned by East Cambs District Council to link pedestrians and cyclists from Haddenham to the A142 and neighbouring villages. There is no funding available to provide this.

### Mepal byway

The council has recently made a Definitive Map Modification Order to upgrade a public footpath to a restricted byway in Mepal. The byway is the one running north from the layby on Witcham Road to meet the footpath running east-west.

Public footpaths are open only to walkers. Restricted byways are open to walkers, horse-riders, and drivers and riders of non-mechanically propelled vehicles (such as horse-drawn carriages and pedal cycles).

The order is available to view on the public notice board at East Cambridgeshire District Council from 6 March 2025 to 17 April. The order will also be placed on deposit for the public to view on request during council opening hours.

### **Meanwhile on the Combined Authority**

The Mayor has now signed into effect a decision to introduce franchising of bus services in Cambridgeshire and Peterborough. This would put control of routes, fares and timetables into democratic hands, and enable profit-making routes to subsidise socially needed but less used ones. However, as he is not standing again in May, this will be for his successor to implement.

The Environment & Sustainable Communities Committee considered plans for the completion of the Local Nature Recovery Plan by the end of this calendar year.

## **MEET YOUR COUNCILLORS**

### **Sutton surgery**

Cllr Mark Inskip and I hold our monthly councillor surgery at Joy Bistro 65 High Street Sutton. Forthcoming dates are Monday 7 April and 12 May.

### **Or catch me on ...**

- Wednesday 5 March, 10:00-10:45, Witchford St Andrews coffee morning
- Wednesday 19 March, 15:30-16:30, Little Downham Village Hall Book Café
- Wednesday 26 March, 10:30-11:00, Coveney Village Hall coffee morning
- Friday 28 March, 13:00-14:00, Scott Court Sutton Nellie's community café

The above may change at short notice subject to late changes to my diary.

I can also be contacted

- by email at [lorna@lornadupre.org.uk](mailto:lorna@lornadupre.org.uk)
- on Facebook
- by phone on 07930 337596

---

## **Cllr Lorna Dupré**

County Councillor for the Sutton division



## District Council Report

February 2025

Full Council met on 25<sup>th</sup> February, with the main agenda item being to set the budget and Council tax level for 2025/26. For the 12<sup>th</sup> year running, the Conservative administration was able to propose a balanced budget whilst retaining a freeze on the District Council's element of the Council Tax. This was agreed by a majority vote.

This results in the Council Tax bill for a band D property as detailed in the table below:

Parish	East Cambs District Council	Cambridgeshire County Council	Fire Authority	Police and Crime	Combined Authority	Total (£)
104.31	142.14	1,700.64	87.21	299.43	36.00	2,369.73

Council also discussed, and agreed a number of other issues. In light of recent Government announcements, it was agreed to cease work on a new Local Plan for the District. The annual Pay Policy Statement was agreed for publication on the website as were Annual financial policies. It was agreed to the deadline for a loan to East Cambs Trading Company to facilitate further work with Haddenham CLT and a new Community Infrastructure Levy project list and governance arrangements were agreed. Council also received reports from ECDC representatives on the Cambridgeshire and Peterborough Combined Authority (CPCA).

I chaired a meeting of the Audit Committee, which received the External Auditor's report on the 2023/24 accounts and approved those accounts. Committee also received a progress report from Internal Audit and commented on the Internal Audit work plan for 2025/26.

Planning Committee met to consider an application for a new Anaerobic Plant at Stretham. This was approved by majority vote.

I attended a meeting of the Swaffhams Internal Drainage, which approved an increase in drainage rates for the coming year. I also attended a meeting of the CPCA Audit and Governance Committee to receive the report from External Auditors, consider the 2023/24 accounts and agree an annual report from the Committee to the CPCA Board.

**David Brown**







atom technologies ltd

# QUOTE

Burwell Parish Council  
Attention: Yvonne Rix (Mrs) Parish Clerk  
Burwell Parish Council Jubilee Reading Room 99 The Causeway  
BURWELL  
Cambridge  
CB25 0DU

**Date**  
24 Feb 2025

**Expiry**  
26 Mar 2025

**Quote Number**  
QU 1612

**Reference**  
Recreation Ground  
Pavillion - Servicing  
remedial works - S3674

**VAT Number**  
784342903

Atom Technologies Ltd t/a  
ATL Alarms  
Unit 8  
Orchard Farm Business  
Park  
Barcham Road  
Soham,  
Cambridgeshire  
CB7 5TU

## Recreation Ground Pavillion - Servicing remedial works - S3674

This quotation is supplied following the systems service visit S3674, on 21-02-25.

Where the following faults require remedial action.

CCTV - Replacement 4TB hard drive as on of the existing is faulty and causing trouble beeps from the system.

Intruder alarm - 1x replacement door contact to the kitchen WC lobby

Fire alarm - require a new log book and the installation of a zone chart.

Emergency Lighting - 2x failures recorded, one in the ladies changing room shower and one in the mens changing rooms.

Description	Quantity	Unit Price	VAT	Amount GBP
Seagate 4TB HDD	1.00	115.24	20%	115.24
CQR Grade 03 Multi White Surface Contact	1.00	12.02	20%	12.02
Zone chart creation	1.00	150.00	20%	150.00
Fire Log Book	1.00	15.00	20%	15.00
Replacement battery pack for shower light fitting	1.00	34.51	20%	34.51
Replacement EL spot fitting for the changing room	1.00	84.00	20%	84.00
Labour	1.00	350.00	20%	350.00
			Subtotal	760.77
			TOTAL VAT 20%	152.15
			<b>TOTAL GBP</b>	<b>912.92</b>





# QUOTATION



www.huwsgray.co.uk

Our Ref: Q1S22725/1 ROD COOK (1S)  
 Your Ref: Yvonne Rix  
 Effective Date: 26Feb25  
 Issue Date: 28Feb25  
 Page: 1  
 Account No.: B5650

HUWS GRAY LTD  
 UNIT 3 NEWMARKET BUSINESS PARK  
 OAKS DRIVE, NEWMARKET, SUFFOLK CB8 7SX  
 Email: newmarketsales@huwsgray.co.uk  
 Tel: 01638 666900

Customer

Delivery

BURWELL PARISH COUNCIL  
 JUBILEE READING ROOM, 99 THE CAU  
 BURWELL

CAMBRIDGE  
 CB25 0DU

Tel: 01638 743142 Mob: 01638 743142

Email: burwellpc@btconnect.com

Line	Qty	Description	Price ex VAT	Value
1	5	ARIEL COROLINE BLACK CORRUGATED SHEET 2m x 950mm x 855mm WIDTH COVER CBS RF050270	17.44 Each	87.20
2	7	KRONOSPAN 8' x 4' x 18mm (2440x1220) OSB3 IMPERIAL SQUARE EDGE FSC TK060080	20.13 Each	140.91
3	16	TTG 47 x 75 x 2400mm KD TREATED CARCASSING MACHINED <45X70> C24 TI040210	3.68 Each	58.88
4	8	ECOTHERM FOILBOARD 2400 x 1200 x 60mm 100000012560 GD080040	33.45 Each	267.60
5	1	150mm 6" No 1928 E/GALV TUBULAR HANDLE PREPACKED 1928PP0150ZP IR400390	4.22 Each	4.22
6	1	150mm 6" No 2A BLACK BRENTON PADBOLT PREPACKED 2A--PP0150BK IR400185	5.12 Each	5.12
7	1.5	121A BZP 300mm LIGHT TEE HINGE PAIR LOOSE 121A0300ZP IR401770	2.69 Each	4.04
			...cont'd over	
			<i>+ Roof Screws</i>	<i>£20</i>

\*\*\* TO PLACE AN ORDER PLEASE CONTACT US \*\*\*  
 PLEASE QUOTE REF. NUMBER

Quotations are subject to our normal Terms and Conditions of sale. A copy is available on our website.

Due to the current climate quotes will only be valid for the month they were generated. Unfortunately we are unable to notify customers prior to every increase. Special orders cannot be returned

Customer are responsible for ensuring the accuracy of any design, drawing or specification provided by them. If we are asked to assist customers by estimating quantities, we will not be liable for any shortage or over-estimation of materials nor for any consequential loss, however caused. Estimates will be based on minimum specifications recommended by our suppliers. Final quantities are the customer's responsibility and customers are strongly advised to employ the services of a qualified quantity surveyor.

Products stating FSC® or PEFC are: FSC® MIX 70% SA-COC-002262 or 70% PEFC CERTIFIED SA-PEFC-COC-002262  
 Head Office - Industrial Estate, Liangefni, Anglesey LL77 7JA

COMPANY REGISTERED IN ENGLAND AND WALES Reg no: 2506633 - VAT Reg no: 713 6074 54

# QUOTATION



www.huwsgray.co.uk

Our Ref: Q1S22725/1 ROD COOK (1S)  
 Your Ref: Yvonne Rix  
 Effective Date: 26Feb25  
 Issue Date: 28Feb25  
 Page: 2  
 Account No.: B5650

HUWS GRAY LTD  
 UNIT 3 NEWMARKET BUSINESS PARK  
 OAKS DRIVE, NEWMARKET, SUFFOLK CB8 7SX  
 Email: newmarketsales@huwsgray.co.uk  
 Tel: 01638 666900

Customer

Delivery

BURWELL PARISH COUNCIL  
 JUBILEE READING ROOM, 99 THE CAU  
 BURWELL

CAMBRIDGE  
 CB25 0DU

Line	Qty	Description	Price ex VAT	Value
		----- TOTAL LINE ----- fr		567.97
		VAT		113.59
		Total including VAT		681.56

## Site Information

Date	04/03/2025
simPRO Job Number	3341
Customer Name	Burwell Parish Council
Site Address	Gardiner Memorial Hall, High Street, Burwell, Cambridge, CB25 0HD
Engineer Name	C. Turner

## System Information

Heat Pump Manufacturer/Model	2 x Mitsubishi PUZ-WM112VAA.UK
Heat Pump Serial Number	1L02497, 2E02268
Cylinder Manufacturer/Model	Not Applicable (No Hot Water)
Cylinder Serial Number	Not Applicable

## Report Information

### Description of works carried out.

We attended site to service the Mitsubishi air source heat pump system at Gardiner Memorial hall in Burwell.

The system is providing heating only via two Mitsubishi 11.2 kW units running in cascade, so they both operate as one entity controlled by a single controller. One of these units has previously been replaced via Mitsubishi under warranty.

We met with a group from the Hall to discuss the system and how it had been operating. They advised us that the heating bills seemed to be high and the system was operating for large periods of time. On discussion, we changed the service to a call out to assess what was causing the issues and look at remedial works that could be undertaken to increase efficiency and reduce costs. These are noted below.

#### 1. Buffer Tank

The 300L buffer tank for the heating is outside which it is not



designed for. As well insulated as the buffer tank is, it's designed to be internal to the property. Having this outside and open to the elements will dramatically increase the heat loss of the system and vastly increase running time.

## 2. Controller Location

The main system controller is located in the entrance lobby and also acts as the master thermostat for the Hall. This room has no heat source and is much colder than the rest of the building. Electronic thermometers have been placed in various locations throughout the building to monitor the temperature. At the time of our visit, these thermometers measured air temperatures between 18-19.5 degrees dependent on location, whereas the main thermostat thought the building was at 9 degrees.

The target temperature the system was trying to achieve was set to 16 degrees. Had this controller been in any other location in the property then the system would have registered that it had achieved the target temperature and shut down, waiting for the building to cool before it was required to work again. In it's current location, it was still running the heating almost non stop when there is no need to.

## 3. Failed Heat Pump

One of the two heat pumps was in fault condition when I arrived. It is showing repeated P8 errors which mean that it is not generating heat properly and has therefor shut down completely to prevent further damage. This has left the building running on 50% capacity which will further increase running costs.

P8 errors are usually a Mitsubishi warranty replacement as they have unfortunately had an ongoing problem with this on certain units. However, the faults can also commonly be caused by a poorly installed system, and remedied by resolving the install issues.

## **Conclusions/Recommendations.**

We discussed the following recommendations to address each of the issues stated above:

1. Build an insulated enclosure around the buffer tank outside, to incorporate the three circulation pumps to the right hand side of the buffer. Allow enough space for entry to the enclosure to carry out work on the pumps and to clean the filters. Insulate as

much as practically possible. This will help to reduce the heat loss from the buffer and result in much more of the heat produced making it into the building as usable energy.

2. Relocate the main controller to an internal wall within the main hall. This is the largest space which will take the most energy to heat so moving it into here will allow it to register the true temperature of the building and let the system shut down when it has achieved the desired target. Siting it on an internal wall will prevent any cool surface temperature from effecting the reading. We demonstrated on site how the external wall is cooler to the touch than the internal wall. Siting on an external wall will have a negative impact on running costs.

### 3. P8 Error on Heat Pump

We advised to contact Mitsubishi and advise them of the error, especially as we believe it is on the unit that has previously been replaced. Usually it would be a warranty replacement but there is a high chance they will refuse any warranty works until the installation issues have been rectified. We recommend rectifying the issues, then interrogating that individual unit to assess if it is a true failure or if it was install related.

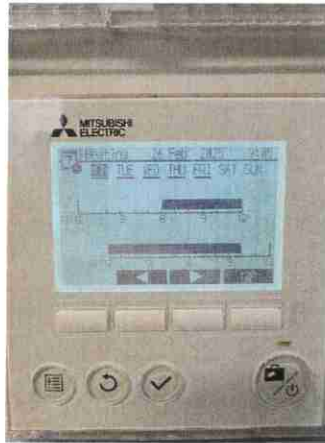
Registering the issue with Mitsubishi now could aid with warranty down the line as the overall install is potentially out of warranty, but the fact this is a new unit may keep the warranty active for a second potential replacement.

## Photos

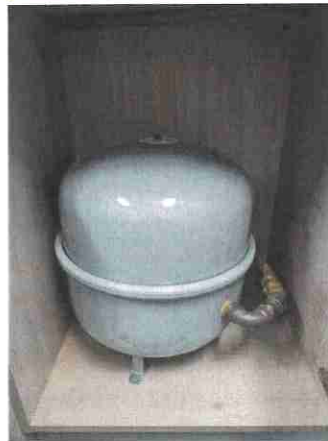
### Site Photos

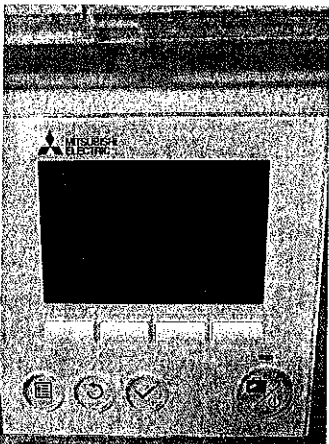
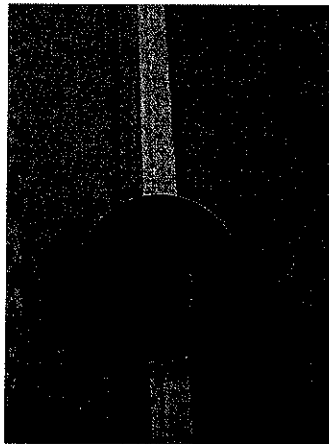














**Embedded Photo**

## Quote Information

**Description of quoted works**

We are not currently providing a quote for these works as we were advised they can take them on themselves. We can return afterwards if requested, to further diagnose the P8 issues on the failed unit.

**Scope of works**

N/A

**Parts required**

N/A

**Labour required**

N/A

## Signatures

**Engineer Signature**

**Customer Signature**



**Burwell Parish Council**  
**Asset and Environment Group**  
**Meeting of 25.02.25, 7.30 pm at Mandeville Hall**

- Members:  
 Lea Dodds (Chair)  
 Chris O'Neill (Vice Chair)  
 Linda Kitching  
 Gus Jones  
 Richard Jenkins  
 Jim Perry  
 Liz Swift  
 Michael Swift  
 Geraldine Tate  
 Paul Webb  
 Ian Woodroofe

**Minutes**

**Present:** Lea Dodds (Chair), Gus Jones, Richard Jenkins, Linda Kitching, Ken McCarthy, Jim Perry, Julia Rogers, Liz Swift, Michael Swift, Geraldine Tate, Paul Webb, and Ian Woodroofe

**A&E/291024/01 Apologies for absences and Declarations of Interests**

Richard Jenkin's declared an interest in A&E/291024/03 item 4a

**A&E/291024/02 Approval of the minutes of the meeting held on 17 December 2024**

The minutes of the meeting held on 17<sup>th</sup> December 2024 were approved and signed as a true and accurate record. This was proposed by Paul Webb, seconded by Liz Swift and all were in favour.

**A&E/291024/03 Property Updates**

Property	Issue/Update	Actions
1)Gardiner Memorial Hall	<p>a. <b>GMH refurbishment Phase Two.</b> We have received several documents and costs and need to decide our next course of action.</p> <p>b. <b>GMH Exit.</b> The exit/entrance to GMH needs to be improved for safety. It was agreed that a pre-planning application should be submitted. The Clerk explained that she hadn't been able to complete this yet.</p> <p>c. <b>Sink brackets £23.99 x4 (£95.86).</b> The sinks are loose to the plasterboard. It has worked well trialling the brackets on one sink so this is the proposed costs for fitting to the remaining 4 sinks. It was agreed to go ahead immediately with this as it was a safety issue. Lea Dodds also suggested adding aluminium finger plates to doors for cleanliness. This would be minimum cost.</p> <p>d. <b>Dishwasher</b> The Clerk informed the group that it has been descaled, thoroughly cleaned and new instructions provided to Key Holders and Hirers.</p>	<p>a) Clerk to set up a meeting to discuss Phase 2 with the project team consisting of Paul Webb, Lea Dodds, Mike Swift, Liz Swift, Ian Woodroofe and Geraldine Tate.</p> <p>b) Clerk to complete pre-application.</p> <p>c) Maintenance Officer to purchase and fit brackets and check costs of finger plates.</p>
2) Mandeville Hall	<p>a. <b>Net Zero project</b> Lea Dodds updated the group that we received £25k of £30k funding requested. Another contractor</p>	<p>c) Chair of F&amp;GP to raise this with the RFO.</p>

	<p>coming to provide us with a third quote to ensure we comply with our financial regulations.</p> <p><b>b. Update on soakaway</b> The Clerk updated that this had been successfully completed and seems to have worked, we will continue to monitor with heavy rain.</p> <p><b>c. Redecoration of Mandeville</b> The Clerk raised that we haven't allowed for redecoration budget on Mandeville following works completion. This will be raised at F&amp;GP</p> <p><b>d. LED Lighting</b> This was not discussed in the meeting.</p>	
3) Jubilee Reading Room	Nothing to be noted.	
4) Pavillion/Recreation Ground and Tennis Courts	<p><b>a. Electrical Remedial Works at the Recreation Ground</b> Richard Jenkins update that this will hopefully progress in March.</p> <p><b>b. Door closer on Rec toilet door circa £20</b> It was agreed this should be purchased and installed.</p> <p><b>c. Removal of unsafe equipment: Static wall and leg raise (appendix 1).</b> The Clerk confirmed this equipment had been removed. We are unable to replace under warranty.</p> <p><b>d. Installation of speed bumps in car park:</b> The Clerk found the following quotes online but was concerned at the discrepancy between costs and possible quality. Before conducting further research she wanted to seek councillors views as to whether the felt the speed bumps were a good idea</p> <ul style="list-style-type: none"> <li>• 4m x2, 3m x2</li> <li>• Barriers Direct: £848.98</li> <li>• The Work Place Depot: £479.95</li> <li>• Speedbumps Direct: £992.40</li> </ul> <p>It was suggested to ask the sports centre as then had installed speed bumps. Generally it was felt to be a good idea but would need to be funded by reserves.</p>	<p>b) Maintenance officer will purchase a door closer and install.</p> <p>d) Clerk to research further and make recommendation.</p>
4) Cemetery	Nothing to be noted.	
5) Allotments	Nothing to be noted.	
6) Margaret Field	Nothing to be noted.	
7) Westhorpe Play area	Nothing to be noted.	

8) Jubilee Green Play area	Nothing to be noted.	
9) Spring Close	Nothing to be noted.	
10) Grass and Hedge Cutting	Nothing to be noted.	
11) Hatley Drive/Kingfisher drive	Kingfisher drive benches were completely rotten and removed.	
12) Bus Shelters	Work approved being completed when possible.	

**A&E/291024/05 Annual Fire extinguisher servicing on all properties**

**Quotes received:**

1. Atom Technologies: £245 + £4.25 per extinguisher
2. Camfire: £275 (quoted per site, additional equipment to service won't cost more)
3. Prestige: £274 (may be additional costs if additional items to service).

**Liz Swift proposed that we recommend to Council that Camfire progress with our fire extinguisher servicing. Paul Webb seconded the motion and all were in favour.**

**A&E/291024/06 Fire/intruder alarm/CCTV and emergency lights servicing**

The Clerk highlighted that we are currently using a number of different suppliers for different properties and that she would like to explore putting one contract in place for all of the buildings. Ian Woodroofe stated that we needed to get a clear scope from suppliers, Paul Webb asked about including PAT Testing but the Clerk felt this was probably better kept separate as it is usually different suppliers. The Clerk said that she would be keen for Ian Woodroofe and Richard Jenkin's input on this.

**A&E/291024/07 Parish Tree Survey**

**Consider quotations (all exclusive of VAT) from:**

Eastern Tree Surgery: £2650  
TMA Consultants: £3134.52  
East Cambs Trading Company: £1850  
Ligna Consultancy: £2803.60

**Liz Swift proposed that we recommend to full Council go ahead with East Cambs Trading Company, Richard Jenkins seconded the proposal and all were in favour.**

**A&E/291024/08 That a two or three person Energy Sub-Group (ESG) be set up to monitor and reduce energy costs in BPC buildings**

**Objectives**

- a. That quotations be obtained for energy audits of Mandeville Hall and Gardiner Memorial Hall.
- b. That the ESG assesses the energy audit quotations and makes recommendations to Council.
- c. ESG acts as the project team for the Mandeville Hall decarbonisation work.
- d. ESG reviews energy suppliers for contract renewals in Q3

**Issues would be prepared for consideration by A&E or full council. We will review the need for the ESG after 12 months.**



Ian Woodroffe, Richard Jenkins, Paul Webb and Lea Dodds all offered to be part of the ESG. Liz Swift proposed we accept their nominations, Geraldine Tate seconded this and all agreed. It was agreed that we didn't need the approval of full Council for this group as they are acting as a sub team that would refer issues/decisions to working groups or full council.

**A&E/291024/09**

**Any other urgent matters**

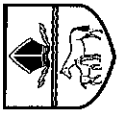
The Clerk raised that we would need to consider replacing tables at Gardiner Memorial Hall soon and that the WI had offered a donation. It was requested that we have some different size tables available.

**A&E/291024/10**

**Date of the next meeting: 29 April 2025**

**Appendix 1:**





**EAST CAMBRIDGESHIRE DISTRICT COUNCIL**  
**STREET NAMING AND NUMBERING SERVICE**  
**SCHEDULE OF CERTIFICATION OF STREET NUMBERING**

PARISH **BURWELL**

IMPLEMENTATION DATE: **15<sup>th</sup> February 2025**

ADOPTED STREET NAME: **TOYSE LANE**

SCHEME REF **STNN/24/115**

DIRECTION: **From North Street**

Official Street No	Property Formerly Known As		Developer	Planning Reference No	Building Control Reference	STNN Reference No	Date
	No/Plot	Development Name					
28							
30							
30A							
32							
34							
36							
38	Plot 01			23/00799/FUL	24/00542/DOMFP	STNN/24/115	15/02/25
38A	Plot 02			23/00799/FUL	24/00542/DOMFP	STNN/24/115	15/02/25
40							
42							
44							
46							
48							
52							
54							

Last Entry Date: **12<sup>th</sup> February 2025**







East Cambridgeshire  
District Council

The Grange, Nutholt Lane  
Ely, Cambs, CB7 4EE

Tel: (01353) 665555

## Street Naming and Numbering

Reference: STNN/24/115

2 x New Dwellings

38 & 38A  
Toyse Lane  
Burwell

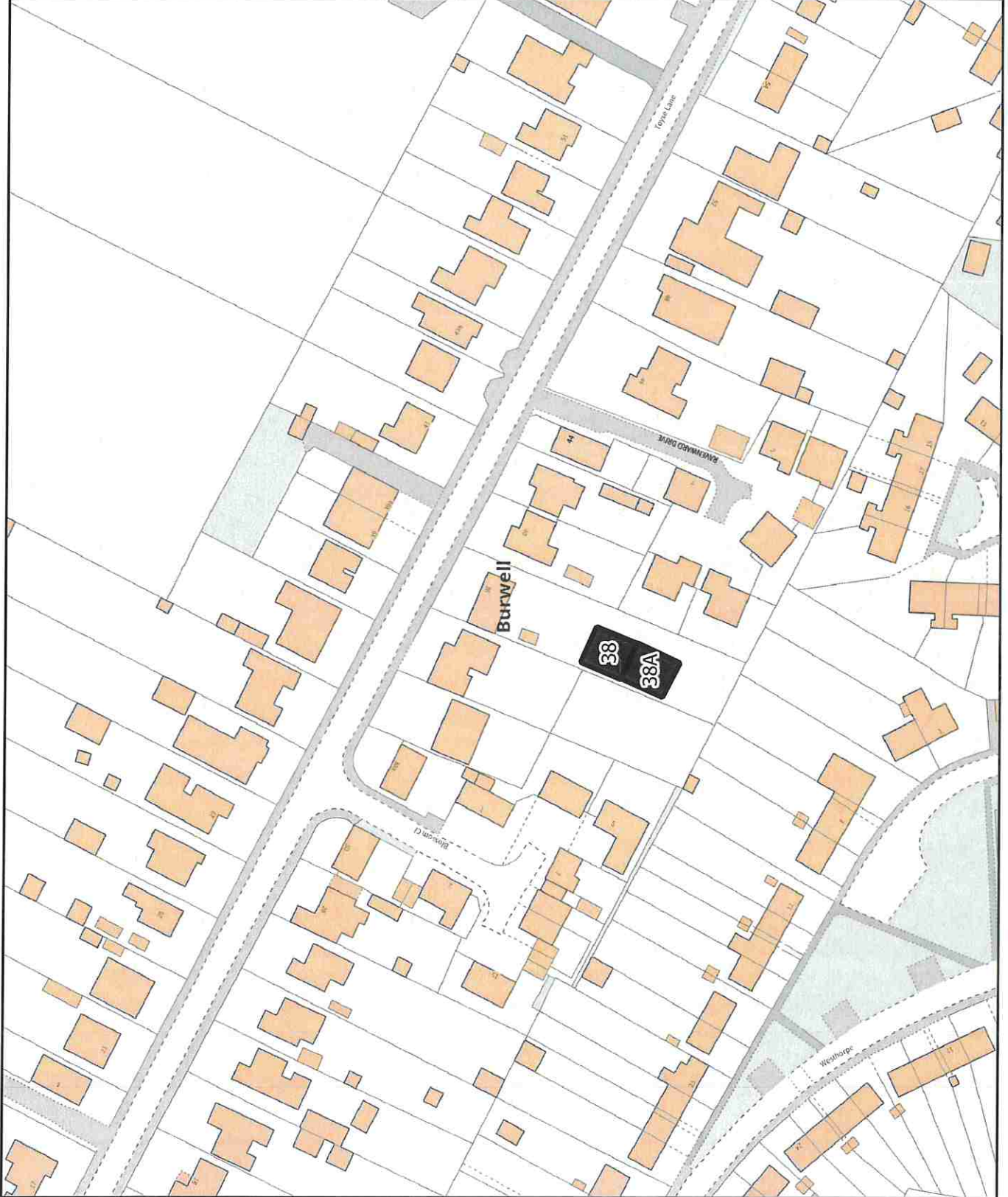
Please read in association with schedule of  
Certification of Street Naming and  
Numbering

**This plan is for identification  
purposes only and does not  
represent legal boundaries.**

Date: 26 Feb 2025

Scale: 1:1,250

© Crown copyright.  
All rights reserved 100023279





**Pauline's Swamp Minutes of the Meeting of 20<sup>th</sup> January 2025 held at 25 The Causeway at 7.30 pm.**

Mike Swift (Chair), Liz Swift, Paul Webb, Paul Hawes, Geraldine Tate, Jenny Moss (secretary), Richard Jenkins.

**1. Apologies .**

Helen McMenamin-Smith, Jim Perry

**2. Consideration of the renewal of tenures of Trustees of Paul Webb and Jenny Moss.**

All remaining five Trustees approved the renewal – motion proposed by Mike and seconded by Liz.

**3. Appointment of Chair for 2025.**

Mike was proposed as Chair by Paul W and seconded by Jenny.

**4. Appointment of Secretary for 2025.**

Jenny was proposed as Secretary by Liz and seconded by Paul W.

**5. Approval of the minutes of 30<sup>th</sup> September 2024.**

The minutes were proposed by Liz and seconded by Paul W.

**6. Action Sheet Updates.**

*1. New land and Visitors Centre.*

Paul Pickles has done an amazing job of clearing the land - Bob Rawlinson has offered to help with further clearance of the land by way of hedge cutting. We need to check insurance details – Geraldine will ask Renata if Bob has private insurance. We'll ask Jim to liaise with Bob, and can supply a hi-viz jacket.

The contractors building the industrial units next door have offered to level the land. Jenny mentioned that someone had told her that a lorry back would be cheaper than a shipping container, but it was pointed out that the shipping container would have already been modified to include windows and suchforth.

*2. Work Days.*

Nicola from Wild Burwell has advised that the pond clearance be done as early as possible, so we will ask Carl Turner if he is available on Saturday 1st March. Paul H has offered more rope to replace the vandalised buoy before this date.

*3. Vision Plan*

Paul and Jenny still to finalise the latest draft revision.

*4. Water Container.*

All complete, and can be removed from the Action Sheet.

*5. CCTV.*

J&J Drake have a new recruit, Sam, who met with Richard, Paul W, Liz and Jim. Sam agreed that the work had been badly done, and so Liz contacted Lisa at the J&J Drake office, who issued a credit note in the case of the router/camera set-up. Richard noted that the solar panels had been badly sited, meaning the router was not getting enough sunlight to function. Sam has agreed to work on future development – Liz will give him until mid-February before chasing this up.

*6. Compost Toilet.*

Paul W will ask Steph Jones at EC Parish Conference if there are any grants still available at this time. Liz will also get in touch with Steph to see if the Facilities Improvement Grant is still available.

*7. Tara.*

No update from Tara yet this year.

*8. Friends of Pauline's Swamp.*

Jenny and Geraldine will see if Gwen Spike would agree to a meeting to discuss how best to establish a Friends Group.

**7. Trustee Vacancies.**

We currently have nine Trustees ( six councillors and three non councillors) and two vacancies. There are three interested parties – Sara Phipps (non-councillor), Victor LeGrande (non-councillor), and Michael Geary (councillor). Jenny will ask each of the interested parties for a resume of what benefits they feel they can bring to the Swamp.

**8. Any Other Business.**

Andrew Kitely, of Lynx Court Development, has asked if we can write a letter saying that we have no objection to them running water and electricity supplies up the edge of Love Lane. This will be fine, but the land must be restored to its current state. Mike has drafted a letter, which Jenny will type up.

There has been some dispute from a neighbouring farmer about the footbridge leading from Love's Lane across to the Swamp, built in 2020. The farmer claims that the edge of the bridge juts out onto Love Lane and prevents a combine harvester gaining access. Our arguments would be that firstly, the lane is too narrow in the first place for such machinery, secondly, that in all our various tenures as Trustees we have seen absolute minimal usage (if any) of Love Lane as access to this field (which is easily accessible from Swaffham Road), and thirdly, that the bridge has been in place for several years with no previous objection, with boards across the ditch previously.

Paul H believes that the ditch is owned by Pauline's Swamp, according to the hedge-ditch boundary rules.

The farmer has asked that we remove the footbridge, or he will have it removed and charge us for the cost. Mike will reply explaining that the bridge is not on his land, the bridge is not obstructing the path, to remind the farmer that a combine harvester would never fit down the green byway known as Love Lane anyway, and to also remind the farmer that his notice by the bridge onto his land saying "No right of way" is actually incorrect, as there is an extension of the public footpath across this land.

Signage: All agree that the design made by Paul Hawes' grandson is very suitable. Paul H suggests that the final width be 1m wide. We need to add "Owned by Burwell Parish Council" at the foot of the design, and orientate the walking person depicted in accordance with arrow, and mirror it for the sign on the opposite sign of the road. The signs will be brown, with aluminium backs. Paul will ask if any changes required can be made before our next meeting.

Open Day 2025. We agreed on Sunday 7<sup>th</sup> September for the next Open Day.



Wicken Fen liaison – Paul and Jenny will see if they can broach the subject at the next Wicken Fen Forum.

**Date of Next Meeting.**

Monday 24<sup>th</sup> February 2025 at 25 The Causeway 7.30 pm.

The meeting closed at 20.54 p.m..

Signed.....

Date.....24/2/2025.....



BURWELL PARISH COUNCIL  
SPRING CLOSE AND PRIORY MEADOW MANAGEMENT GROUP

MINUTES OF THE MEETING OF 16/01/2025

Present; Mike Swift (Chair), Liz Swift, Geraldine Tate, Colin Smith, Caroline Smith, Rachel O'Leary, Martin O'Leary, Nicola Hallows

Apologies; Paul Webb, Jim Perry

The minutes of the meeting of 12/09/2024 were accepted

Grass cutting

It was agreed to hold a site meeting at Spring Close with the grass cutting contractor, Zion, before the start of the grass cutting season. Mike and Liz are to organise the meeting. Martin suggested leaving uncut edges around the boundaries of the mown areas to improve biodiversity. Colin thought that this should not apply to the base of the earthwork banks to discourage nettle encroachment. Martin replied that the instructions to Zion needed to be clear. He also pointed out that some of the planted saplings at the boundary edges had been cut down when Zion had mown or strimmed close to the boundary hedge. Clear instructions were also needed about the extent of the cutting of the brambles and nettles on the slope from the Mandeville entrance down to the spring and around the spring.

Mike reported that Zion would be using more appropriate machinery for the hay cut this year. Nicola asked that the council remind Zion to collect the grass cutting arisings from Priory Meadow and take them to the compost areas provided in the meadow.

Greater Cambridge Chalk Stream Project

Nicola, Colin, Caroline and Rachel will attend a site meeting at Spring Close on Friday, 17/01/2025, at Spring Close, meeting Rob Martyr of the Chalk Stream Project and Dr Steve Boreham, a prominent local geologist. The focus of the meeting will be on improving the environment of the spring pool and the headwaters of the stream.

Other Spring Close Matters

A large ash tree fell across the stream during a storm, blocking the path. The upper branches fell on the opposite bank of the stream, damaging the Tan House fence. The council has engaged Shaun Reader, a tree surgeon, to remove the branches from the Tan House fence, clear the path and make the area safe prior to cutting up the fallen tree, leaving as much dead wood on site as possible.

The Parish Council Clerk has also emailed Kevin Drane, the ECDC Tree Officer, for his views on the state of other nearby ash trees. Mike said that there will be a tree

inspection of all the parish council trees in the summer. He confirmed that the trees growing on the castle mound and earthwork banks would be inspected.

#### Work parties at Spring Close

Colin, Caroline, Nicola, Rachel, Martin and other Wild Burwell members raked away the grass cutting arisings after the earthwork banks were cut in the autumn. Colin led a group scything and raking away ground vegetation on the castle mound. Malcolm Busby cut back nettles from the stream path. Work was also done to clear the up and over path and the low-level path from the meadow to the footbridge. Colin is continuing to clear or cut back scrub in some areas.

Nicola obtained a grant for Wild Burwell from ORIT. Some of the grant funds were used to purchase sturdier, taller wire tree guards to replace the existing tree guards. The new guards should prevent muntjac deer from eating the shoots of the saplings. Nicola and Colin installed the tree guards. Geraldine offered to see if there were funds available from the Repair Café or the Swish events to help pay for more of the new tree guards.

#### Tree planting at Spring Close

The group agreed that hedgerow species could be planted at a location on the northern boundary where a diseased mature field maple had previously been felled. Wild Burwell will provide the saplings from the tree nursery.

#### Priory Meadow Matters

Wild Burwell is organising a wassail at the community orchard on Sunday, 19<sup>th</sup> January. Everyone is welcome. Liz and Geraldine plan to attend.

The apple and pear trees will be pruned under Colin's guidance.

Wild Burwell have put up 6 nestboxes along the boundary of Priory Meadow with Parsonage Farm.

There will be a Tree Nursery Work Day on Saturday, 15/02/2025.

The residents of Parsonage Farm have made safe and will clear away a poplar tree that fell from their boundary into Priory Meadow.

Martin notified the parish council of the Woodland Trust consultation about the future management of Priory Wood. The map attached to the Woodland Trust plan showed only the main entrance from Priory Meadow into the wood, and not the second "unofficial" entrance. The council has expressed concern about the Woodland Trust's proposal to put up kissing gates at entrances to the wood as this would restrict disabled access. The Woodland Trust is also considering fencing the boundary between the wood and Priory Meadow. Colin thought hedging was more appropriate. Wild Burwell and individual members have made their own responses to the Woodland Trust plan.



Wild Burwell asked for both entrances to be retained from the meadow to reduce erosion from the meadow paths. If there was only one entrance and one path, that path would become more severely eroded.

### Insurance

Martin asked if the council could review their insurance to check any conditions that might apply to volunteers working on parish council land, particularly when volunteers worked at different times from organised work parties.

### Kingsway Solar Farm

Mike spoke about the proposed Kingsway Solar Farm in the Weston Colville/Balsham area. The prospectus indicated that the new solar farm would connect to the National Grid at a new electricity sub-station in Burwell. The location of the proposed new sub-station has not yet been decided. The new solar farm wants to connect to the grid by new overhead power lines and pylons. Mike was concerned about the lack of clarity about the proposed route of the new overhead power lines. He said there could be an impact on local farms and landholdings. Mike advised that we needed to be watchful of possible adverse impacts on Spring Close, Pauline's Swamp and Priory Wood from the new overhead lines, pylons and the proposed new electricity sub-station.

### DATE OF NEXT MEETING

Thursday 13/03/2025 7.30p.m at the Jubilee Reading Room



Burwell Parish Council  
The Jubilee Reading Room 99  
The Causeway  
Burwell  
Cambridge  
CB25 0DU

30 January 2025

Dear friends

Thank you so much for supporting our former patient and local Burwell parishioner Helen McMenamin-Smith with a collection at the Burwell Christmas Carol concert. We received a fantastic donation of £161.19 and appreciate this very much.

The amount donated could equate to the cost of purchasing 4 blizzard blankets which are used in the treatment of hypothermia. These hooded foil blankets contain heat pads, and gently warms the body when wrapped around the patient. Hypothermia can be life threatening at any time of the year making them an essential piece of our kit. Alternatively, the amount donated could equate to the cost of purchasing 3 sets of AED pads, also known as defibrillator pads. Cardiac and respiratory arrests are the most frequent incidents to which we are called and these pads allow us to shock the patient's heart in an attempt to restart it. Please be extremely proud of the difference you are helping us to make!

Magpas Air Ambulance is powered by people such as you and your wonderful concert go-ers, we just couldn't do it without you. Thank you for your donations.

Kindest regards

*Emma*

Emma Sanders  
Community & Events Officer  
E: emma@magpas.org.uk  
M: 07990 068731





**Magpas Air Ambulance**  
Barnwell Road  
Enterprise Campus, Alconbury Weald  
Huntingdon, Cambridgeshire  
PE28 4YF  
01480 371060  
magpas.org.uk

Burwell Parish Council  
The Jubilee Reading Room 99  
The Causeway  
Burwell  
Cambridge  
CB25 0DU

**Patrons:**  
**The Lord Fairhaven** KstJ JP DL **Dr Neville Silverston** MBE **Christopher Vane Percy**  
**Prof. Ian Greaves** OStJ FRCSEd FASI MB ChB FRCP FRCER FIMC FRCSEd DTM&H FIMC DMCC DipMedEd



Magpas Air Ambulance is a Registered Charity No: 1119279  
Registered as a company limited by guarantee in England and Wales No: 6062176

**With you, we save lives**



## Katherine Hyett

---

**From:** Nicholas Acklam <acklam@reach-village.co.uk>  
**Sent:** 12 February 2025 11:32  
**To:** swaffhampriorclerk@gmail.com; clerk@swaffhambulbeckpc.org.uk;  
clerk@bottisham-pc.gov.uk; clerk@greatwilbrahamparishcouncil.gov.uk;  
ClerkLW@wilbrahams.co.uk; Katherine Hyett  
**Cc:** David Greenfield; Susan Bailey; Simon Chandler  
**Subject:** THE KINGSWAY SOLAR PROPOSAL

Dear Parish Clerks,

David Greenfield, who leads for Swaffham Prior PC on energy proposals, and I recently reviewed our Parish Councils' stances on the Kingsway Solar proposal.

In short, the PCs' perspectives were very similar. Both had written (separately) to express opposition to the 'connection corridor' element of the proposal and to request that, if the proposal was to proceed, Kingsway buried the cabling connecting the proposed PV arrays to the National Grid.

We are keen to know how other parishes within Kingsway's connection corridors have responded to Kingsway during its non statutory consultation process and to the Planning Inspectorate in response to Kingsway's environmental scoping report.

If there is a consensus among the parishes of the corridors, we also wondered how PCs felt about working collaboratively during the planning process. As I am sure you know, the PCs that would host the PV arrays under Kingsway's proposal are setting up an alliance to oppose the scheme. This email is not designed to subvert or supersede that alliance but to focus on our principal area of concern - the significant adverse impact on the landscape of our parishes of an overhead cable and pylons. Ultimately it may well be that our collective interests are best served by operating under a single umbrella alliance. I have therefore copied Simon Chandler of West Wrating PC who is coordinating the setting up of the alliance into this email in the interests of transparency.

David and I would be very interested in your PC's views on these questions.

Regards,

Nick Acklam  
Reach PC



## Katherine Hyett

---

**From:** Marilyn Strand <clerk@soham-tc.gov.uk>  
**Sent:** 17 February 2025 12:51  
**To:** Marilyn Strand  
**Cc:** info@soham-tc.gov.uk  
**Subject:** Invitation - Combined Parish Councils' Meeting re: Net Zero  
**Attachments:** Outlook-A picture; Outlook-rzdwkxas; Invitation - Monday 17th March.docx; Invitation - Monday 17th March.docx; Environment and Net Zero - Cross-PC Discussion ForumV2.pptx

Dear Clerk & Council Members

Soham Town Council would like to invite you to a meeting of local Town and Parish Councils to discuss Net Zero / Climate Change and what we, as Councils, can do to promote 'Green' Initiatives across the District.

Please find attached the invitation and also a presentation with further information on the subjects we are looking to cover on the night.

The meeting will be held on Monday 17th March at 7pm, at the Walter Gidney Pavilion, Fountain Lane, Soham, CB7 5ED. There is parking on site and refreshments will be served.

Please could you confirm attendees by Wednesday 13<sup>th</sup> March at the latest.

With kind regards,

on behalf of Soham Town Council,

*Marilyn*

Marilyn Strand PSLCC  
Town Clerk & RFO



Soham Town Council  
The Walter Gidney Pavilion  
Fountain Lane  
Soham, Cambs  
CB7 5ED

Tel: 01353 723472

M: 07930 005307

Email: [info@soham-tc.gov.uk](mailto:info@soham-tc.gov.uk)

Website: [www.soham-tc.gov.uk](http://www.soham-tc.gov.uk)

**Office Opening Hours: Monday to Friday 09:00 – 13:00 hours**

If you have received this email in error, please notify the sender and delete the email and all attachments immediately. This email (including any attachments) may contain confidential and/or privileged information and is intended solely for the addressee. It has been checked for viruses, but the contents of an attachment may still contain such, which could damage your computer system. Email transmission cannot be guaranteed to be secure or error free and is therefore at your own risk.

Any views or opinions expressed within this email or attachment are solely those of the sender, and do not necessarily represent those of the Soham Town Council.

Any personal data will be processed in line with the Data Protection legislation, further details at [www.soham-tc.gov.uk/privacy-policy](http://www.soham-tc.gov.uk/privacy-policy)



## **Introduction**

'Net Zero is one of the biggest challenges facing the world today. There are lots of difficult things that we must do in the coming years to avoid the world changing in a bad way that no longer properly supports life as we know it.

The big questions that we, as Parish Councillors, need to answer are:

- 1) How should all levels of councils (Combined, County, District, Town, Parish) work together in this area?
- 2) What should Town / Parish Councils be doing to encourage our Parishioners to adopt 'Greener' lives?

## **Invitation**

We would like to invite your Council Clerk and at least one of your Councillors to this **combined PC meeting at the Pavilion, on the Recreation Ground in Soham at 7pm on 17<sup>th</sup> March 2025** so that we can see what you are currently doing in this space and your future plans. Please could you be prepared to give a short presentation on what your council has done and is doing or planning to do?

We would also like to see if the idea of working together on joint initiatives is something you think would work.

Please let us know the numbers attending. We will be serving tea and coffee and biscuits!



# Environment and Net Zero – Cross PC Discussion Forum

---

What should we, as Parish Councils, do to help preserve the environment, reduce pollution and climate change emissions?

# Why have a Cross – PC discussion

## Forum?

- **Possible Agenda for the first meeting:**
  - Do we agree that we should be doing something?
  - Summary of what is currently happening across the Parish Councils
  - What should we focus on to help our Parishioners?
  - What support should we be looking for from the ECCDC and CCC?
    - Clear list of funding sources
    - Net Zero Events
    - Technical support
  - Would it help if we had this type of cross – PC forum for other subjects?

# Background slides



# Why can't we just do nothing?

- Farming, deforestation, over fishing, building, industry, population growth are all harming our world.
- CO2 is rising fast – causing temperature rise – causing sea level rise – causing adverse weather – causing crops to fail.
- Pollution is rising – causing people to die (40000 people die prematurely in the UK from airbourne pollution EVERY year)
- Some scientists believe we are close to the point where it is irreversible.
- **TIME IS SHORT.**

# What are the BIG areas of concern?

- Transport = 26%.
- Heating = 27%
- Industry = 19%
- Farming = 12%
- Waste = 10%



# How has the UK done so far (since 1990)?

- There are 3bn trees in the UK and that covers 13.2% of our land – this is the highest for 100 years
- The UK's climate change gas emissions have reduced by 50% since 1990
- Electricity generation – removed coal from mix. Renewables at record level (58%)
- Transition to electric vehicles well on the way (19.6% of new car sales in 2024 are EVs )
- Electricity usage down by 25% since 2005
- Domestic heat pump and solar rollout gathering speed.

# What could we do, as Parish Councils, do to help?

- **General**
  - Plant trees
  - Rewild grass verges
  - Promote improvements in recycling levels
- **Free Parish council advice service**
  - Offer free house energy assessments
  - Offer free advice to people who want to transition to Evs
  - Run energy efficiency workshops
  - Offer any and all advice to help our parishioners become more 'green'
- **Planning**
  - Mandate solar , heat pumps, waste water management and EV chargers on all new builds.

# What could we do, as Parish Councils, do to help?

- **Sponsorship**
  - From businesses for 'Green' projects.
  - To individuals for 'Green' projects
- **Neighbourhood plan**
  - Plan for trees, renewable energy, nature restoration
  - Mandate for new homes to be – energy efficient, nature friendly and close to transport links and amenities
  - Safe walking and cycling routes
- **Education**
  - School visits
  - Publicity campaign



# What could we do, as Parish Councils, do to help?

- **Promote all Green funding avenues**
  - **EVs**
    - BIK tax reduction for company cars
    - Salary sacrifice (paying for car from 'gross' salary)
    - 'Plug in' grants for cars / vans
    - Charger grant (for renters / landlords)
    - OZEV grants for business chargers
  - **Heat pumps, Solar, Insulation**
    - £7500 grant for Heat pumps
    - Green Deal loans
    - HUG2 grants
    - ECO4 grants
    - SEG scheme for Solar
    - 'Action on Energy' grants

# Why have a Cross – PC discussion Forum?

- **Current status**
- Currently most Parish councils are doing little in the area of Environment and Net Zero
- Those that are active are concentrating on facilities that they own (Solar, Heat pumps, insulation etc)
- Very little is being done to help our parishioners to become aware and active in helping achieve Net Zero and properly care for the Environment
- **Without the help of our Parishioners we will not achieve Net Zero in time to save our planet as we know it.**

# Why have a Cross – PC discussion Forum?

- **Parish Councils work closely together to:**
  - Share ideas
  - Form consistent action plans
  - Share resources
  - Promote each others activities
- **Our Parishioners see:**
  - The Parish Councils actively working with them in a consistent way.
  - Opportunities to become more ‘green’
  - How to get access to funding and advice

