

Cllr Lorna Dupré

MONTHLY REPORT APRIL 2025

LOCAL GOVERNMENT REORGANISATION

Council leaders across Cambridgeshire and Peterborough have sent a letter to the Minister of State for Local Government and English Devolution setting out progress on plans to move towards a new system of local government.

The letter, signed by the Leaders of Cambridgeshire, Peterborough, Huntingdonshire, East Cambridgeshire, Cambridge and South Cambridgeshire, is in response to the invitation from Government for councils to work together to develop a proposal for local government reorganisation. They have also issued the following joint statement.

“We are approaching local government reorganisation with an open mind and a spirit of wanting the best for all our residents and for the local area as a whole. Not all of us would have chosen this path, but we accept that it is the path we are on and realise it is important that we collaborate to control our own destiny.

“In recent weeks, we have been working closely together to understand the differing perspectives of each authority and to consider the various unitary scenarios.

“Further work will take place, at pace, after the county council and mayoral elections to reach a shared understanding of how best to progress our proposals. The scenarios we are considering will take account of historic community identities, the interests of residents, economic geographies, and local demographic representation.

“We look forward to further discussions with each other and with government, and when the time is right, with residents, Members of Parliament and our partners including the police, NHS, fire service and town and parish councils. We will continue to work together to achieve the best outcome possible for our residents and every community, village, town and city in Cambridgeshire and Peterborough.”

ADULTS & HEALTH

Community Navigators service renewed

The renewal of a service which helps residents remain independent and stay living in their own communities has been approved by Cambridgeshire County Council’s Adults and Health Committee.

'Community Navigators', which has been running since 2012, provides personalised support to older people, residents aged 18 and over with disabilities, and their carers. A dedicated team of staff and volunteers from Care Network, which currently runs the service on behalf of the council, connects individuals to services, activities, and interventions in their local communities.

The support provided includes

- Informing people about, and referring them to, relevant activities and services.
- Helping people access information to answer questions and enable them to do things for themselves.
- Supporting people to access activities that enable them to remain independent, safe, and well.
- Reaching out to communities to engage with people who may be eligible for Adult Social Care services.

Service users can choose to receive support either in the community, at home, or over the phone.

Over the last three years, Community Navigators has received nearly 9,000 referrals via the NHS, community and voluntary sector, and the county council's adult social care service. A further two-year contract is due to start on 1 October.

<https://care-network.org.uk/community-navigators/>

Learning Disability Support

County councillors have confirmed their commitment to ensuring ongoing support for people with learning disabilities and their families, following changes to how the council works with the NHS in Cambridgeshire.

The Learning Disability Partnership (LDP), which has provided integrated health and social care support for adults with learning disabilities in Cambridgeshire, has been formally dissolved from 1 April 2025. Councillors are calling on local health partners to fully share information about the arrangements for NHS funded support from this month and to ensure complete continuity of care from the NHS for people currently receiving services, to match those commitments already made by the council.

The Council and the Cambridgeshire & Peterborough Integrated Care Board (ICB) are continuing discussions on how to work together to maintain services across the county. However, discussions are ongoing about payments owed for the services provided by the council, including historical debts. There still remains an opportunity to reach an agreement before entering formal legal mediation, and the council hopes for a constructive resolution that benefits all involved, particularly those who rely on these important services.

County councillors have raised concerns about this service separation and the associated financial issues, which has been formally escalated as a corporate risk by the council. The council continues to press for a resolution.

CHILDREN & YOUNG PEOPLE

Holiday Activities & Food

Funding for the Holiday Activities and Food (HAF) programme has been extended by the Department for Education into 2025. The programme offers families the opportunity to access funded places and a meal for their child during the main school holidays of Easter, Summer, and Christmas.

Any child receiving benefit-related free school meals is eligible for the Easter programme, which will run between 7 and 17 April. Approximately 20,000 HAF eligibility vouchers were sent to Cambridgeshire families on 3 March.

Each voucher offers a child sixteen hours of access, for no charge, to a HAF registered holiday scheme. Eligible children will be able to access:

- A variety of schemes including sports, playschemes, drama, technology, outdoor adventure and youth schemes.
- Enriching experiences to develop children's skills and confidence.
- At least one nutritious meal a day.
- Daily physical exercise through sports and/or play.

Further information can be found at

www.cambridgeshire.gov.uk/council/communities/support-with-the-cost-of-living/holiday-activities-and-food-programme

COMMUNITIES, SOCIAL MOBILITY & INCLUSION (COSMIC)

The Library Presents ... your choice

Residents are invited to choose the acts they would like to see perform in the Autumn 2025 Season of *The Library Presents*, Cambridgeshire's library-based arts programme. Between 26 March and 2 May, residents are invited to take part in The Library Presents choosing process. Their selections will help decide which artists and performances feature in the Autumn lineup.

Since its launch in 2018, *The Library Presents* has delivered more than 1,000 hours of entertainment, and more than 500 events, offering everything from live music and puppetry to immersive digital arts and hands-on workshops.

Browse the selection at your participating libraries or go online between 26 March and 2 May to take part.

<https://www.library.live/the-library-presents>

Council of Sanctuary

Cambridgeshire County Council has received Council of Sanctuary status, reaffirming the council's commitment to creating a welcoming and inclusive environment for people seeking sanctuary in Cambridgeshire.

The council is amongst one of the first county councils in the UK to receive this national award, which celebrates local authorities that work hard to demonstrate hospitality and a warm welcome to new arrivals in the area. The title was awarded by City of Sanctuary UK, a nationally coordinated network of organisations and services that support refugees and people seeking asylum. Cambridgeshire's wider commitment to being a place of welcome and inclusion.

ENVIRONMENT & GREEN INVESTMENT

Tree & Woodland Strategy

The County Council has adopted a Tree and Woodland Strategy and Action Plan. It has also approved the introduction of a 'woodland pledge' to increase canopy cover and safeguard existing woodland across the council's own landholdings.

A target to increase woodland canopy to 13 per cent, and to increase the hedgerows to 323km, will be included in the Council's performance management framework and in the Climate Change and Environment Strategy.

Biodiversity Strategy

The Council has also adopted a Biodiversity Strategy with objectives and Action Plan. The key performance indicators within the action plan will form part of the Council's performance management framework.

The objectives of the strategy are based on the Making Space for Nature review led by Sir John Lawton in 2010 which sets out the key principles for rebuilding nature in the UK and make it bigger, better, and more connected.

Cambridgeshire co-president for UK100

Leader of Cambridgeshire County Council Cllr Lucy Nethsingha has been appointed as one of three new co-presidents of UK100, the UK's network of local government leaders committed to tackling climate change.

UK100 is a cross-party membership organisation supporting the most ambitious councils to go further and faster on their Net Zero and Clean Air targets. All members of the UK100 network have pledged to meet their ambitious climate targets ahead of the government's 2050 goal, and as a member, Cambridgeshire County Council is making good progress to reduce its own carbon emissions.

Between 2018-19 and 2023-24, direct emissions from the council's own assets have reduced by 42 per cent. The ongoing reduction in direct emissions is due to

a programme of low carbon heating projects. Fossil fuel-based heating systems like gas or oil boilers have been replaced with low-carbon air source heat pumps at 25 council buildings. The Council is also exploring ways it can reduce its indirect emissions further.

Drainage on Ely Road Little Downham

Discussions on potential drainage solutions in the area of the entrances to Old Fir Close and the new development next door to it are ongoing.

HIGHWAYS & TRANSPORT

Chain Causeway Sutton

Works are now completed, and traffic is now flowing again, to the relief of some and the disappointment of others. We will need to wait until the summer to hear whether Sutton Parish Council's (third) application for a weight limit through the village has been successful.

Mepal to Sutton walking and cycling route

Consultants WSP have been working on potential active travel improvements between Mepal and Sutton. Council officers suggest these discussions focus on:

- Upgrading the shared-use path along the A142 from Sutton to Mepal
- A new toucan crossing to facilitate the path's safe crossing of the A142
- A new toucan crossing at the A142-Ely Rd roundabout

At present, it is hoped that this project could be delivered in the 2027/28 financial year.

Footpath 3 Gravel End to Downham Hythe

Work began on Monday 10 March to restore this footpath, with an expected completion date in May.

Mill Road bridge bus gate

Following an extended period for drivers to get used to the new layout, fines at the Mill Road bridge bus gate in Cambridge are now in effect.

VE and VJ Day street parties

Cambridgeshire residents wanting to host a street party to celebrate the eightieth anniversaries of Victory in Europe (VE) Day and Victory over Japan (VJ) Day will not have to pay a fee for the production of their Temporary Traffic Regulation Order (TTRO) to legally close a road.

Applications for VE Day celebration road closures must be made by Thursday 17 April 2025 and applications for VJ Day celebration road closures must be made by Friday 25 July 2025. Before applying for a road closure, applicants should

consult with residents in the area to make sure there are no objections, ensure signs are clearly visible for all road users, and make sure the street is cleared of any rubbish before it is reopened.

Communities hosting events and activities connected with VE Day and VJ Day commemorations are also being encouraged to add them to the interactive map at <https://ve-vjday80.gov.uk/events/> allowing others to discover what is taking place in their local area and get involved.

An application form, and more information on applying for a road closure to hold a street party, can be found at <https://www.cambridgeshire.gov.uk/residents/travel-roads-and-parking/roads-and-pathways/highway-events/organising-a-street-party-event>

Meanwhile on the Combined Authority

The Overview & Scrutiny Committee discussed a—heavily redacted—report on concerns about past governance of the Combined Authority's housing fund, particularly (though not only) regarding schemes in East Cambridgeshire. The redacted report can be found at <https://democracy.cambridgeshirepeterborough-ca.gov.uk/ieListDocuments.aspx?CId=139&MId=164> (Item 13).

MEET YOUR COUNCILLORS

Sutton surgery

CLlr Mark Inskip and I hold our monthly councillor surgery at Joy Bistro 65 High Street Sutton. Forthcoming dates are Monday 7 April and 12 May, 18:30-19:30.

Or catch me on ...

- Friday 25 April, 12:00-13:00, Scott Court Sutton Nellie's community café

The above may change at short notice subject to late changes to my diary.

I can also be contacted

- by email at lorna@lornadupre.org.uk
- on Facebook
- by phone on 07930 337596

CLlr Lorna Dupré

County Councillor for the Sutton division

District Council Report for March

March Planning Committee met to consider 1 application. This was for a bungalow on Swaffham Road, Burwell. Committee refused the application.

Full Council held an extraordinary meeting in March to consider 2 items: Council agreed to formally adopt a revised Neighbourhood Plan for Witchford. Council also agreed an initial, holding, response to the Government request for a proposal on moving from the current 2-tier system in Cambridgeshire and Peterborough to a Unitary system.

David Brown

BURWELL PARISH COUNCIL SAFETY MINUTES

Date: 18 March 2025

Location: Mandeville Hall

Present: Paul Webb, Ian Woodroofe, Lea Dodds, Geraldine Tate, Liz Swift

Apologies: Clive Leach and Jim Perry

Membership:

Paul Webb: Chair
 Ian Woodroofe: Vice Chair
 Lea Dodds
 Clive Leach
 Jim Perry
 Liz Swift
 Geraldine Tate
 Brenda Wilson

1) Approval of the minutes of 21 January 2025

The minutes of the meeting held on 21st January 2025 were approved and signed as a true record.

2) Rolling Actions and updates

Ref	Item	Action	Responsibility	Due
A	Safety/Crimes/Scams	The Clerk sent a draft web page on 14 th March. The group asked her to resend these and were asked by the Chair to feedback by Friday.	All attendees	21st March
B	Emergency Plan https://eastcambs.gov.uk/about-council/emergencies/community-emergency-plans	Paul Webb asked people's views on emergency plan. Lea Dodds said it looks like a lot of work to keep it live and up to date. There is a continued commitment. Ian Woodroofe committed to filling out the emergency plan for the next meeting and also suggested raising at the Annual Parish Meeting. This was agreed and the Clerk will add it to the agenda. Ian is happy to present this at the annual Parish Meeting.	Ian Woodroofe	20 th May
C	Speedwatch	Jim Perry has confirmed to Paul Webb that he would be prepared to resign as Speedwatch co-ordinator. John Rollin has volunteered to act as co-ordinator should the vacancy come up. Paul Webb asked the Clerk to draft a resignation letter for Jim and said that he is keen for Speedwatch to be active by the end of April. Th Clerk said she had been in touch with the new Police Coordinator who had informed her that Speedwatch cannot be conducted	Clerk	End of March

BURWELL PARISH COUNCIL SAFETY MINUTES

		<p>funding we will go back to Highways and check on total costs and make sure it doesn't escalate.</p> <p>LHI 2026/2027's – it was decided this should be discussed at a later date.</p>		
f	The Causeway – parking, yellow lines, speeding	<p>The letter to residents on the Causeway has been delivered to remind them that they shouldn't park on the verge or drive on the pavement.</p> <p>Councillors asked if there was an option to add rocks/barriers to park on the grass. They agreed that we should put up signs saying please do not park on the verge. Recommendation with costs to go to Council.</p>	Clerk	April
g	Highways safety concerns	<p>Halo Lights at Pound Hill Zebra Crossing: The Clerk had asked Highways if we need permission to install Halo Lights. No response has been received, she will follow this up along with a number of other queries raised. The new Highways Supervisor for Burwell is Bradley Southwell.</p> <p>It was suggested that we create some information for Burwell at Large to inform people how to report potholes and other highways issues.</p>	Clerk Clerk	Ongoing 20 th March

3) Correspondance:

- a) **TMC Incident Report February 2025** – The Clerk receives this report and asked Councillors if they would like to receive this. They confirmed they would prefer not to unless it had specific Burwell data.
- b) **Signage – Weirs Dove/Recreation Gound for Children and wildlife** – The Clerk should ask Highways if we require permission to erect signs and investigate the types of signs that we can use and suppliers (this will be added to updates on the next agenda).

4) Safety of lithium-ion batteries campaign

It was agreed that we should draft a letter in support of this campaign. This response should be recommended to Council and added to the website if agreed.

5) Hate crime awareness & 3rd Party reporting centre

BURWELL PARISH COUNCIL SAFETY MINUTES

It was agreed that the Clerk should offer this training to all Councillors and then organise.

6) Burwell Bypass

This was deferred to a future meeting

7) 2025/26 20mph funding programme – applications open

Lea Dodds felt that Council should not apply at his point due to the results from the Village consultation. He stated that the implementation of 20 mph in Wales is a perfect laboratory – they have before and after data that we can use to reassess in future. They have already been able to reduce insurance costs through a 20% reduction in collisions. Councillors were in general agreement. It was also highlighted that we have applied for the flashing signs on the Causeway and Bunting's Path which would need to be removed should 20 mph be implemented. Lea Dodds said he would check this. It was agreed that any potential 20mph scheme should not be discussed until late summer 2026 when there is more data from other 20mph schemes.

8) Questions/issues for the Police Commissioner visit on 20th May:

Questions suggested were:

- I. Could you tell us what you are responsible for?
- II. What have you achieved in the past 12 months?
- III. What are your objectives at a Parish level?
- IV. What is the difference between his role and the Chief Constable?
- V. How can we get answers to questions about policing support from Cambridge constabulary when we are not reporting a specific crime?
- VI. Can we have speed cameras in the village? (prompted by a resident's complaint letter)
- VII. We have previously asked both yourself and local police to respond to the following question regarding driving on a pavement and had no response. Please could you clarify whether parishioners can report pavement driving to the police and expect a prosecution for this behaviour, provided it is backed by video evidence to <https://www.cambs.police.uk/advice/advice-and-information/rs/road-safety/making-a-road-traffic-incident-report/>
- VIII. Speedwatch - Why can't you have proper speeding camera that record date, time and picture?

It was agreed that the Clerk should email these questions to all Councillors and ask for their input.

9) AOB

A letter has been sent to the Chair of Council raising concerns about speeding on Swaffham Road. Council has noted their concerns and the request for speed cameras and will pass this request to the Police. The Clerk will respond to the letter.

10) Next meeting date: 20th May

Meeting closed 20:42

Signed:

Dated:

BURWELL PARISH COUNCIL SAFETY MINUTES

ADDITIONAL INFORMATION

Item 2E

LHI's to consider 2026/2027

The Local Highways Improvement (LHI) programme covers all districts in Cambridgeshire and invites any groups or organisations that represent the local community to apply for funding. The schemes are community driven and give local people the opportunity to put forward proposals for highway improvements in their area.

The schemes are delivered by the County Council on a joint funded basis and applicants can apply for funding of up to either £25,000 for complex projects or £10,000 for non-complex projects, as a contribution to their scheme. The applicant is expected to provide a minimum contribution of 10% towards the total scheme cost.

<https://www.cambridgeshire.gov.uk/residents/travel-roads-and-parking/roads-and-pathways/improving-the-local-highway/local-highway-improvement-funding>

Idea	Complex	Non-complex	Notes
Zebra crossings at either Reach road/Swaffham road or nr. The Cemetery on Ness Rd	Yes	No	Typical cost: £48,000 The zebra crossing costs allow for 40m of carriageway resurfacing on either approach, installed under a road closure. There is no provision for drainage or street lighting
Redesign of junction at the top of the Causeway	Probably	No	More detail needed
Road markings	No	Yes	This covers specific road markings to slow traffic, not re-dong road markings already in place.
Bollards on the Causeway to stop cars parking on the pavement	No	Yes	To prevent cars parking on pavements and verges, physical deterrents can also be used. They cause an obstruction so cars can not pull onto pavements or verges. <ul style="list-style-type: none"> • £1,700 The bollard cost is based on the supply and installation of one Cambridge Bollard, installed under basic traffic management.
Yellow lines: junctions onto the Causeway	No	Yes	Yellow lines can prevent all types of parking - both on the road or on verges and pavements but they can be expensive as there is a lengthy legal process before installation. Cost £4000

BURWELL PARISH COUNCIL SAFETY MINUTES

Item 3a:

The TMC responded to 117 incidents on the road network throughout Cambridgeshire in February covering 20 weekdays. This figure is slightly lower to that of what we reported in February 2024 and a decrease to that of Januarys.

Please see the table below which illustrates the number of incidents over the last 6 months, compared to the same period last year;

Incidents by month/year

	Sept	Oct	Nov	Dec	Jan	Feb
2023/24	103	88	144	81	163	125
2024/25	159	156	191	88	143	117

Item 3b

From a resident:

As we turn left from Hythe lane to weirs drove many ducks are killed because there is no duck crossing sign. Is it possible to install such a sign there?

From a resident:

Please could we have warning signs approaching the recreation ground. There are 2 sharp corners – turning right out of Hythe Lane and left into the recreation ground, children are often in the middle of the road and cannot be seen. If you are not local you would not be awarher

From Councillor Lavinia Brown

Dear Katherine

I have been approached by several local residents concerned with ducks on the road along Weirs Drove and particularly near to the bridge.

They would like to see some slow down signs, beware of the ducks etc. is this something Burwell Parish Council would consider doing to make it safer for the ducks?

Kind Regards

Lavinia

Item 4

Dear Local Council

Safety of Lithium-ion Batteries Campaign

You may recall that I wrote to you in June last year to inform you of this campaign. So let me reintroduce myself. I am the assistant to Lord Foster (hence my email address) and the Parliamentary Advisor to the charity Electrical Safety First (ESF).

ESF and Lord Foster launched this campaign in June last year to ensure the safety of Lithium-ion batteries. The attached transcript of a webinar held by ESF on 30th December outlines the issues and the campaign, which is designed to save lives and cut down on fires and save damage to property. There are four issues

- That e bikes and e scooters and the Lithium-ion batteries used to propel them are subject to independent testing before being marketed. Currently this is not the case.
- That regulation are made to ensure the safe disposal of the batteries. Currently this is not the case resulting in fires in bin lorries and waste disposal sites.
- That charging kits and conversion kits used on the bikes are also safe. Currently regulations do not cover this.
- That online marketplaces through which many goods are sold nowadays are subject to the same safety regulations as high street shops. Currently this is not the case.

This campaign has the support of a large number of organisations (see attached) including the NALC and the SLCC as well as 500 individual local Councils, and we are already discussing this with Ministers – who are not unfriendly. We feel, therefore, that the support of local councils will keep the momentum going and hope you will be able to back this campaign.

I look forward to hearing from you,

All the best

Ron Bailey

BURWELL PARISH COUNCIL SAFETY MINUTES

Item 7

I am writing to make you aware that the 2025/26 20mph funding programme is now open again for applications. The process is open for new applications, as well as providing existing applicants within the long list who weren't successful for funding last year to review, update and reapply if they wish.

Our website pages can be found at the following link: [20mph Funding - Cambridgeshire County Council](#) . We have reviewed some of the information included on those pages to reflect the feedback we have received from last years process – our thanks to those whom have contributed to that. We have kept the examples of previously successful applications for reference, but have not included any Supporting Documentation that were provided with them.

Applicants are now able to make applications until 17:00PM on Friday 28th March 2025.

Should you have any questions or comments please send these to the Local Projects inbox: Local.Projects@cambridgeshire.gov.uk

Please note, we are also expecting to host a virtual engagement session prior to the closure of the 20MPH application window on Thursday 20th February 2025 between 12.00 and 13.30pm. If you would like to attend, please make contact with the above Local Projects email alongside any queries you may have, and we can provide you with the Microsoft Teams link for it.

Kind Regards,

Michael Martin

Senior Project Manager

Design & Delivery

Project Delivery

Climate Change Forum Minutes

4th March 2025, 7.30 pm at Mandeville Hall, Burwell

Present: Mike Swift, Liz Swift, Geraldine Tate, Lea Dodds, Jim Perry, Clive Leach
Alima Adams, Martin O’Leary, Nicola Hallows, Julia Rogers

Clerk: Katherine Hyett

1. Apologies for absence

Ian Woodroofe, Paul Webb

2. Approval of the minutes of 7th January 2025

The minutes of the meeting held on 7th January 2025 were approved and signed as a true and accurate record. This was proposed by Liz Swift, seconded by Jim Perry and agreed by all.

3. Declaration of interests

None

4. Updates from previous meeting and actions

Item	Actions agreed
Earth Cafes	
Earth Cafes: Organise an open meeting through BEG to find volunteers to run Earth Cafes Paul Webb attended the Soham event but wasn’t present to update. Lea Dodds said an alternative option is Planet and Pint. Katherine Hyett mentioned that there are energy cafes in Burwell library soon. Liz Swift highlighted open sessions for BEG worked well in the past	Clive Leach to speak to Paul Webb. Clive to update at next meeting.
Wildlife counts	
Wild Burwell to monitor wildlife numbers. Martin O’Leary will supply Nicky Hallows with some wildlife counts.	Nicky Hallows to update at the next meeting.
Action Plans	
Biodiversity Plan	
Nicky Hallows to update and Katherine Hyett to support with Parish Council input. It as previously agreed that the relevant vision plan should be incorporated. Martin O’Leary commented that the Spring Close and Pauline Swamp Vision plans should be discussed at the 13/03 meeting and reallocated so these get completed.	Nicky Hallows aim to present more information at the next meeting Martin O’Leary – add to the agenda for Spring Close meeting 13/03
Pollution Plan	
To be created Awaiting terms of reference to be reviewed	Nothing noted
Group name and Terms of Reference	
Terms of reference to be reviewed and proposal made. Katherine Hyett provided a suggested update for the terms of reference. Feedback for changes were: <ul style="list-style-type: none">• Add the frequency of meetings	Katherine Hyett to update the Terms of Reference and add

<ul style="list-style-type: none"> • The agenda should be focussed on climate action plan • Should include how the Chair is elected – suggested vote on chair every 2 years • Change method of operation to similar to working groups • 1 representative from each external group <p>Lea Dodds spoke in favour of changing name to CBP forum. Mik Swift feels that Climate Change forum covers what we need. Julia Rogers highlighted that including biodiversity is a massive motivator. Geraldine Tate asked whether it's already implicit in climate change, Lea Dodds doesn't feel it is.</p> <p>Clive Leach proposes that we take the name and TOR change to Council. Lea Dodds seconded this. 8 voted in favour and 2 abstained.</p>	<p>proposed changes to Council Agenda.</p>
<p>Swish and Repair Cafes</p>	
<p>9th Repair café on 2nd march at Mandeville – was very busy about 50 items came through. 3rd Swish on 16th March at GMH There is funding that can be distributed to benefit projects supporting climate action. The Repair Café website is open for bookings.</p> <p>Nicola Hallows suggested the Emorsgate website for Chalkland wildflower seeds to Geraldine Tate. Geraldine had previously updated that they may be donating wildflower seeds to children.</p>	<p>Nothing noted.</p>
<p>Net Zero</p>	
<p>Net Zero fund: £25k awarded for Mandeville Hall to cover 34 panels, wall battery will be fitted and loft insulation. Actions are being taken forward by the newly created ESG (Energy Sub Group).</p> <p>The Museum was also successful. It will become an education hub, including a demonstration wind turbine. Will also have solar array on the vehicle shed and significant cost and carbon savings. Starting work on this on 31st March. Clive said he would welcome an input from Wild Burwell for displays about the local area and biodiversity.</p> <p>Combined authority fund: Burwell Sports Centre has applied to the combined authority for an amount in excess of £100k</p>	<p>Nicky Hallows and Clive Leach to meet about the Museum education Hub.</p>
<p>Wildlife Corridor</p>	
<p>Wildlife Corridor between Spring Close and Priory Wood: Nicky Hallows has contacted the Woodland Trust – they have now decided they are not interested. She will contact the farmer directly. Julia Rogers suggested that Nicky should speak to Michael Geary about it. Nicky highlighted that there are incentives from the Government re. Forestry</p>	<p>Nicky Hallows to contact farmer/Michael Geary.</p>

5. Climate Action Plan Progress

What	Actions	Goal and progress
Carbon Neutral Parish Council by 2030	1. Establish the Council's carbon footprint as of February 2020 to establish a carbon emissions baseline against which progress can be monitored 2. Identify and quantify potential carbon reduction measures 3. Select the most effective measures and create a roadmap 4. Implement the roadmap 5. Monitor the Council's carbon footprint and report on progress annually 6. Investigate offsetting and implement as appropriate	
Climate Emergency Contingency Planning	Work in progress – refer to other emergency plan	
Reduction of Burwell's Carbon Footprint		
Flights		
Local Transport		
Energy		
Food and Agriculture		
Local business		
Environmental Protection and biodiversity		
Waste and Resources		

Katherine Hyett confirmed that the above table was a summary of the goals on the Climate Change Action plan and was added following a request that the agenda move back towards achieving this. She would like to structure the agenda around these goals.

The Chair said good progress has been made with work on Parish Council Buildings progressing.

Lea Dodds highlighted the need to communicate well, in reducing Burwell's Carbon Footprint it is about about behaviour, people are defensive, education is important. He informed the group about the meeting at Soham Town Council where the aim is to share what other parishes are doing to achieve Net Zero.

Martyn O'Leary raised that the emergency plan is important. KH suggested that we should this go back to safety.

6. Museum Education hub

Updated under Item 4

7. Any Other Business

Geraldine Tate asked about recycling at the halls and it was confirmed this would be covered under Assets and Environment.

Jim Perry said that there was an agreement a number of years ago with Lakenheath/Mildenhall Air base and Cambridge Airport about not flying over the village. Clive Leach said he would chat to Jim about this.
/Mildenhall airbase and Cambridge airport - that would not fly over

8. **Date of the next meeting** – the date of the next meeting is still to be confirmed.

Climate Change Forum Proposed Changes February 2025

The following Terms of Reference were approved by Full Council on 24th August 2021	Proposed Change including change of name:
OLD	NEW
<p>Meetings: The Forum will meet at least six times a year.</p> <p>Membership: All interested Parish Councillors plus a representative of any properly constituted Local Environment Group (Burwell Environment Group, Wild Burwell, Spring Close Management Group, Pauline’s Swamp Trust, National Farmers Union, or a member of the local farming community). The meeting will be chaired by a member of the Parish Council. If the Parish Clerk is unavailable to attend a meeting, the Forum will nominate a person to act as Minute Taker. Quorum is eight.</p> <p>Spending Powers: Expenditure per item/project will be set by Full Council</p> <p>Powers of Referral: The Forum may refer or make recommendations to Full Council, provided that the proposal has been minuted at the relevant meeting.</p> <p>Action Plan: The Forum will develop its own working programme within the Framework of</p>	<p>Climate Change, Biodiversity and Pollution Forum (CBP Forum)</p> <p>Objectives:</p> <ul style="list-style-type: none"> • To deliver on the Climate Change, Biodiversity and Pollution Action Plans as agreed by Burwell Parish Council and to facilitate networking between relevant groups and stakeholders around the village to achieve this. • Prevent or minimise pollution to air, water and land • Protect and enhance the quality, extent and accessibility of Burwell’s ‘green infrastructure’ (open spaces, trees, waterways and natural environment) for people and biodiversity. <p>Vision</p> <ul style="list-style-type: none"> • For Burwell Parish Council to become carbon neutral by 2030 • To have a plan to manage climate emergencies • To support the reduction of Burwell’s carbon footprint, increase biodiversity and access to green spaces. <p>Stakeholders/Members:</p> <p>Quorum – 8</p> <p>Meetings: The Forum will meet at least six times a year. It will be organised in the same way as other working groups with the exception that external groups are invited</p> <ul style="list-style-type: none"> • Burwell Parish Council - The meeting will be chaired by the Chair of the CCF, or in their absence the Deputy Chair, or in their absence, any other Parish Councillor. The Chair and Deputy Chair will be elected by Burwell Parish Council at the start of Council’s term and reviewed after 2 years. The Parish Council consists of 17 elected volunteers who serve a 4 year term. If the Parish Clerk is unavailable to attend a meeting, the Forum will nominate a person to act as Minute Taker. <p>External groups to be invited, the expectation is one representative from each:</p> <ul style="list-style-type: none"> • Burwell Environmental Group

the Council's Climate Emergency Action Plan document. It will be evaluated before and amended after each Forum meeting and attached to the Minutes as an Appendix.

- Wild Burwell
- Spring Close/Priory Meadow Management Group
- Pauline's Swamp
- Farmer's representative
- Local Businesses
- National Trust/Wicken Fen

Resources:

- **Spending Powers:** Expenditure per item/project will be set by Full Council.

Powers of Referral:

- The Forum may refer or make recommendations to Full Council, provided that the proposal has been minuted at the relevant meeting.
-

Measurement and evaluation:

- Progress to be reviewed against Burwell Parish Council's Climate Action Plan annually

Communication:

- The Climate Change Forum should be responsible for updating the Climate Action Plan and presenting this to Burwell Parish Council
- Updates to the Parish Council website page as required and include links to our partner/member organisations

Burwell Parish Council - Finance and General Purposes

25.3.2025

Present Paul Webb (Chair), Brenda Wilson, Liz Swift, Michael Swift, Lea Dodds, and Yvonne Rix (Responsible Financial Officer).

F&GP/25032025/01 Apologies for absences and declarations of interests

Apologies for absence has been received from Charlie Milner, Ian Woodroofe, Gus Jones, and Linda Kitching. There were no declarations of interest.

F&GP/25032025/02 Approval of the minutes of the meeting held on 28.1.2025

The minutes of the meeting held on 28th January 2025 were approved and signed as a true and correct record.

F&GP/25032025/03 Consideration of the Action Sheet and updates from previous meeting:

PROJECT	INFORMATION AND UPDATES
Local Council Risk System	Clerk to annually review all Risk Assessments and the need to create new assessments following Council decisions/activities. Agreed that at the next meeting a list of all risk assessments should be available, grouped with review dates set out over the year. Social media risk assessment still to be reviewed.
CCLA Investment	Funds at 28.2.2025 £113,469.37 noted.

F&GP/25032025/04 Financial Update

Yvonne Rix shared an overview of the Council's finances for the year. There are some overspends within the budget. These are mainly with the halls due to additional maintenance and energy costs. Overall Council has remained within the agreed budget.

F&GP/25032025/05 Staff Hours Clerk/RFO from April 2025, Staff Appraisals and Salary reviews, approval of acceptance of NJC agreed salary Increases from April 2025.

Appraisals have been completed. The following recommendations were discussed and agreed to be recommended to Council. Allowance has been made within the 25/26 to allow the increase in hours for the Clerk and RFO, advancement of increments, the annual NJC increase and employer national insurance increase.

Recommendations:

Katherine Hyett, Sarah Ashby, George Rowland and Debbie Cawley receive an increase of one increment from 1st April 2025.

The working hours for the Clerk is increased to 37 hours per week with the necessary amendments made to the contract.

The working hours for the Responsible Financial Officer is increased to 7 hours per week with the necessary amendments made to the contract.

That the annual salary increase from 1st April 2025 is implemented to all salaries once agreed by the National Joint Council.

F&GP/25032025/06 Engie - Energy Provision (Challenging)

Lea Dodds reported that the recently formed ESG Group is looking at energy supply for the buildings and is disappointed that Engie do not carry out meter readings. There is also concern that the Council may have been mis-sold energy products when entering into the contracts with Engie. Lea Dodds continued that some business customers have successfully challenged Engie for the mis-sale of products and it may be worth using a no win, no fee company to look at the Councils' situation. It was agreed that this should

be a recommendation to Council, proposed by Lea Dodds and seconded by Liz Swift. Lea Dodds to source some possible no win, no fee businesses that could be used.

Recommendation

That Council appoints a no win, no fee company to investigate possible mis sale of Engie energy products in 2022. Companies to be sourced once recommendation approved by Council.

F&GP/25032025/07 Mandeville Hall Lighting Upgrade – Earmarking of funds from Solar Farm annual contribution

The lights at Mandeville Hall are due to be upgraded as part of the Mandeville Hall Green Project, however the grant funding does not cover this. The ceilings will also need to be made good once the work has been completed. It was suggested that the funding received by the Council from Care Power (Burwell1) Ltd could be used for the lights and repairing the ceiling. The following recommendation was proposed by Lea Dodd and seconded by Liz Swift.

Recommendation

That the £10,000 received from Care Power (Burwell1) Ltd (Battery Storage Unit Weirs Drove) is earmarked for new lights and making good the ceiling following installation which form part of the Mandeville Hall Green Project.

F&GP/25032025/08 Social Media and Communications Group

A meeting still needs to take place to look at the way forward for the Social Media and Communications Group. Hopefully, this can be arranged for before the Annual Meeting of the Parish Council. Paul Webb to draft a risk assessment for the group.

F&GP/25032025/09 Any Other Matters:

Yvonne Rix gave an update on sourcing additional different auditors. She has some information but wishes to investigate more prior to bring to Council.

She then continued by asking if a recommendation could be made increasing the credit limits for the Lloyds cards.

Proposed by Liz swift and seconded by Michael Swift the following recommendation was made:

Recommendation

That, if possible, the Lloyd payment card limits are increased to £750.00 (Maintenance Officer) and £1000.00 (Clerk) and that the maximum purchase amounts are increased to £375.00 and £500 respectively.

F&GP/25032025/10 Date of the next meeting – 27th May 2025

The meeting closed at 20.35 pm

Signed

Date

Burwell Parish Council

Energy Sub-Group

Minutes of 19 March 2025 Meeting, JRR 14.30

Present

Paul Webb

Richard Jenkins

Ian Woodroofe

Lea Dodds (Chair and Minutes)

	Action
<p>1) GMH</p> <p><u>Understanding the controls.</u> We do not understand the interaction between the box near the server (under perspex cover), the controller (recently moved from lobby) and the switch by the radiator closest to the server (which switches off all the radiator fans). We need to find all the OEM documentation, user manuals etc. (believed to be on a memory stick).</p> <p><u>Setting the controls</u> We confirmed that the controller settings should be : Every day of the week 20C daytime, 17C night time Night time setting to start at 21:30 Day time setting to start 1 hour before the earliest regular booking for the hall (which becomes the start time for every day) The settings can be adjusted as we gain experience.</p> <p>However, <i>no changes will be made</i> until we understand the controls.</p> <p><u>Installing energy monitoring</u> Richard unsure whether the Shelly EM has been ordered yet.</p> <p><u>Compensation</u> We discussed seeking compensation from Varsity for the incorrect design/implementation/handover of the GMH heating system. Deferred to a future meeting when we have original contract, sign-offs and other documentation in front of us.</p>	<p>Paul to locate and circulate. (Since the meeting, Katherine has provided access to the files)</p> <p>Richard to check with Katherine</p> <p>Paul to locate and circulate the information.</p>
<p>2) Mandeville Hall</p> <p><u>Energy audit</u> We agreed the briefing document for the prospective energy auditors should include:</p> <ul style="list-style-type: none">• Upgrading Loft & Wall Insulation• Installing Solar PV• Installing Battery Storage• Replacing all Fluorescent Lighting with LED• Replacing the Gas Boiler with an ASHP or other low carbon solution• Cooling/ventilation for all ground floor rooms, possibly with heat recovery• Inform that the building overheats in summer, made worse by the need to close windows after 10pm• Evaluating passive cooling measures e.g. extra insulation, reglazing or external shading• Request clear expenditure guidance based on pay-back figures and CO2 reductions.• Request recommendations that cover a range of climate change projections <p><u>Lighting</u> Have we contacted other companies to get quotes?</p>	<p>We need a volunteer to draft this</p> <p>Richard to ask Katherine</p>

<p><u>Any other Mandeville issues</u> We discussed whether to switch from Corona to a new energy provider. Factors to consider include cost per kWh, ability to handle feed-in to the grid, a competitive feed-in rate and whether the electricity tariff is 100% from renewables.</p> <p>We believe that Octopus ticks most of those boxes, but we need to check all potential suppliers</p>	<p>Lea to investigate and report back</p>												
<p>3) Next Meeting</p> <p>We agreed to meet on the second Monday of each month. Other meetings can be called as required.</p>													
<p>Schedule for Q1 - Q3, 2025 (unchanged)</p> <table border="0"> <tr> <td data-bbox="134 577 416 607">March-April</td> <td data-bbox="424 577 1139 636">Mandeville Energy audit. Then, respecify work + re quoting if necessary.</td> </tr> <tr> <td data-bbox="134 647 252 676">April-May</td> <td data-bbox="424 647 954 676">Recommendation and approval of contractor</td> </tr> <tr> <td data-bbox="134 687 280 716">May-August</td> <td data-bbox="424 687 979 716">Mandeville Phase 1, co-ordination and delivery</td> </tr> <tr> <td data-bbox="134 728 272 757">March-April</td> <td data-bbox="424 728 919 757">GMH - fix most urgent issues with heating</td> </tr> <tr> <td data-bbox="134 768 248 826">June-Oct work</td> <td data-bbox="424 768 1134 797">GMH - energy audit, leading to getting quotes for necessary work</td> </tr> <tr> <td data-bbox="134 831 240 860">Aug-Sep</td> <td data-bbox="424 831 719 860">Review energy contracts</td> </tr> </table>	March-April	Mandeville Energy audit. Then, respecify work + re quoting if necessary.	April-May	Recommendation and approval of contractor	May-August	Mandeville Phase 1, co-ordination and delivery	March-April	GMH - fix most urgent issues with heating	June-Oct work	GMH - energy audit, leading to getting quotes for necessary work	Aug-Sep	Review energy contracts	
March-April	Mandeville Energy audit. Then, respecify work + re quoting if necessary.												
April-May	Recommendation and approval of contractor												
May-August	Mandeville Phase 1, co-ordination and delivery												
March-April	GMH - fix most urgent issues with heating												
June-Oct work	GMH - energy audit, leading to getting quotes for necessary work												
Aug-Sep	Review energy contracts												

TEMPORARY TRAFFIC ORDER APPLICATION FORM (TTRO)

Please Send Your Applications to:	Applicants Details:
Cambridgeshire County Council Street Works Team Vantage House Washingley Road Huntingdon Cambridgeshire PE29 6SR Tel: 01480 372444 Email: street.works@cambridgeshire.gov.uk	Name: TMO HIGHWAYS Address: BUILDING 1, ROY HUMPHREY SITE, A140, EYE, IP23 8AW Tel: 01379 676462 Emergency 24-hour Contact No: 07870 894801 Email: samuel.gasson- cox@TMOHIGHWAYS.CO.UK

The cost of this application is:
£1190.00 for a Full Order or **£835.00** for an Emergency Order

YOU MUST ALLOW AT LEAST 12 WEEKS FOR THIS ORDER TO BE PROCESSED. A STREET WORKS PERMIT MUST HAVE BEEN SUBMITTED BEFORE THIS FORM WILL BE CONSIDERED

PLEASE TICK ALL RELEVANT OPTIONS THAT APPLY:

ROAD CLOSURE	<input checked="" type="checkbox"/>	FOOTPATH CLOSURE / PUBLIC RIGHTS of WAY *** Please see Notes for Applications below.	<input type="checkbox"/>	SPEED LIMIT	<input type="checkbox"/>	OTHER (Please specify below) — SELECT THIS BOX IF CYCLE LANE CLOSURE ETC IS REQUIRED, THEN STATE BELOW (ADDITIONAL TM)	<input type="checkbox"/>
Additional T/M Requirements	NONE <input checked="" type="checkbox"/> STOP / GO <input type="checkbox"/> 2-WAY LIGHTS <input type="checkbox"/> 3-WAY LIGHTS <input type="checkbox"/> HOURS OF OPERATION: _____ 24/7 _____						
DESCRIPTION OF WORKS:							
NEW GAS CONNECTION							
Road Name	Hall Lane						
Parish / Town	Burwell						
Road Number (i.e.: A140)	12000706						
Location of Works	Hall Lane CLOSED from the junction of Spring Close for 87m eastbound						

Closure Start Date:	09/06/25	End Date:	13/06/25
Closure Times: 24/7 or Specify Times	24/7		

Working Hours: 24/7 or Specify Times	0800-1800
Diversion Route – List all roads & parishes (with names and numbers if possible) These can be found on Roadworks.org with “NSG” selected under Operational Info within the Map Layers Menu. Please provide a map showing the extent of the closure and diversion route.	Main Diversion Route; High St, (Burwell) Spring Close, (Burwell) and Vice Versa
Will the alternative route include a Trunk Road? (If so, it is the responsibility of the applicant to gain agreement from the National Highways and submit a copy of the approval to Street Works)	YES <input type="checkbox"/> NO <input checked="" type="checkbox"/> Details:
Does the above route have any restrictions, i.e., Low bridges, weight limits, tunnels, fords, ‘one way’ or other Orders on it? (If yes then please give details). Some of these can be found here	YES <input type="checkbox"/> NO <input checked="" type="checkbox"/> Details:
Will this Order apply to pedestrians, cyclist and/or equestrians? (If so, please provide details)	YES <input type="checkbox"/> NO <input checked="" type="checkbox"/> Details:
Please add any comments that you feel may assist the application	

Payment Details	
Please specify the details of the company or individual that Cambridgeshire are to collect payment for the TTRO to be processed.	
Company Name: TMO Highways	
Address: Building 1, Roy Humphrey Site, A140, Eye, IP23 8AW	Tel. No: 01379 676462
	Email: jo.balding@tmohighways.co.uk

YOUR ORDER NUMBER:	
TMO/39981	

Please note: It is the applicant's responsibility to inform residents, businesses, the Local Parish Council and County Councillors about the closure. We may request to see the information you have sent them prior to sending you the legal order. Details can be found by following this [link](#)

FAILURE TO ADHERE TO THE CONDITIONS SET OUT WITHIN THIS DOCUMENT MAY RESULT IN AN APPROVED ORDER BEING WITHDRAWN.

REQUIRED ADDITIONAL IMPORTANT INFORMATION

1. Please ensure you give the official road name with the correct spelling for which the Order is required.
2. Access may be allowed to Emergency Services **IF** safe passage permits.
3. Pedestrian / Cyclist and Access to properties must be allowed at **ALL** times, unless otherwise agreed.
4. An order will only be granted where a suitable alternative route or arrangements are available.
5. A clear map showing the extent of the closure and diversion route must be attached to this application.
6. Signs 1050mm by 750mm bearing the words "This Road will be closed "From To" and including the dates of the closure **MUST** be placed at all approaches to the site **at least 14 days** prior to the proposed closure.

Notes for Applications to close Public Rights of Ways (PRoW) / Footpaths

1. CCC strongly encourages early engagement with PRoW Officers prior to any application being submitted to close a Public Right of Way or footpath (PRoW).
2. Initial applications to close a Public Right of Way or footpath can only be granted for a maximum duration of 6 months.
3. If the applicant is aware that the closure is likely to exceed 6 months, they should indicate this on the initial application but will still need to apply for an extension using the following procedure:
4. The applicant needs to apply to Street Works at least **8 WEEKS** before the expiry date of the initial 6-month TTRO with full justification AND any alternatives that have been considered and reasons for not being able to accommodate any alternatives.
5. The applicant should use reasonable endeavours to minimise any extension duration and further extensions may be refused.

6. Applicants will be required to meet on site with our Senior Street Works Inspector and PRow Officer to discuss the reasons for the extension and justification. The site meeting must be held within 2 weeks of the extension request being submitted to Street Works and applications to the Secretary of State (SoS) will not be progressed until the meeting has been held and alternatives explored. The SoS requires a minimum of 4 weeks to consider an extension request. Any applications that do not comply with item 4. may be automatically refused.
7. All applicants should be prepared to accommodate any reasonable alternatives suggested by the Senior Street Works Inspector and PRow Officer and will be asked to justify in writing any refusal to accommodate reasonable and achievable alternatives. Additional cost to the works promoter will not be considered justification.
8. Applicants should not assume the full duration of the extension request will be granted and a reduced period may be agreed at the site meeting.
9. Applicants should not assume that extensions will be granted by CCC even if the Secretary of State (SoS) approves an extension.
10. The PRow should be reopened as soon as reasonably practicable and in a condition that is safe for all users of the PRow. In any case, it should be reopened in a safe condition, no later than the expiry date of the extension, if granted.
11. Failure to reopen a PRow on or before the expiry date of the TTRO / extension may result in CCC initiating appropriate enforcement action.

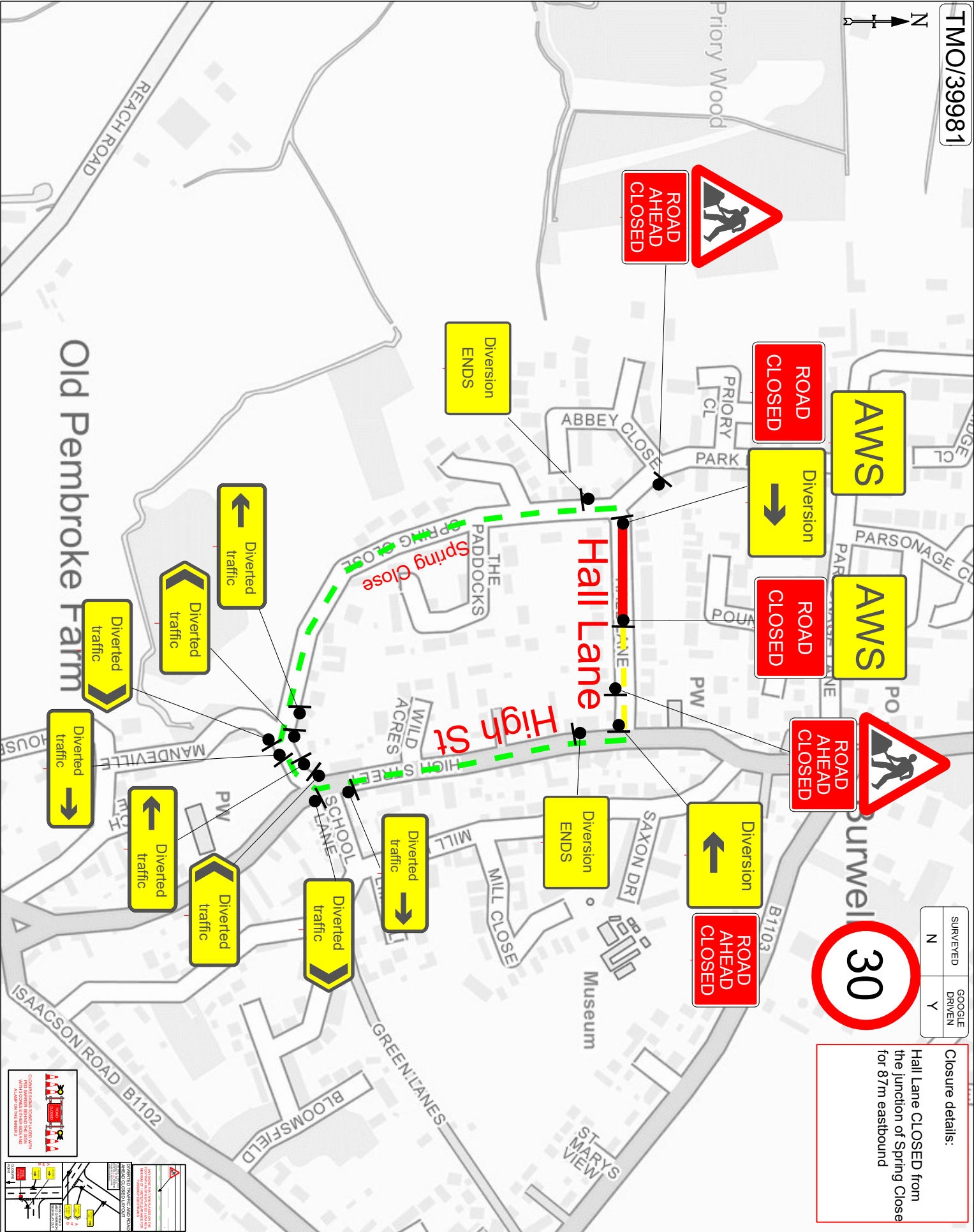
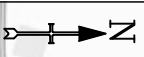
DECLARATION:

All the information given in this application is true and I have checked all the names of streets and parishes against an official map of the area.

Applicant's Signature:.....STGC **Date:**17/03/25.....

Company:TMO Highways... ..

Position:Planner.....



SURVEYED	N	GOOGLE
DRIVEN	Y	



Closure details:
Hall Lane CLOSED from the junction of Spring Close for 87m eastbound

TMO-PL-009/rev21 | Review due - 01/12/25

TMO Highways
Building 1, Roy Humphrey Site
A140, Eye, Suffolk, IP23 9AW
Tel: 01379 676462

Customer Details:

Cadent

Drawing Details:
TM Type: Road Closure
Location: '17 HALL LANE, BURWELL, CB25 0HE

Planner: Samuel Gasson-Cox
Email: samuel.gasson-cox@tmohighways.co.uk

- Key**
- Sign Diagram
 - Advances Location
 - Road Closure Location
 - Access Only
 - Diversion Route
 - 12AB Install Signs

Drawn	SGC	Revised	by	Revision
Date	17/03/25	Date	-	00
Drawn/Revised				

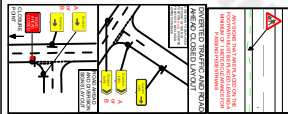
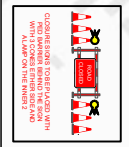
Main Diversion Route:
High St,
Spring Close
and Vice Versa

TOTAL NUMBER OF SIGNS:- 20

Drawing checked via email by: AV

PLEASE NOTE :
a. All Traffic Management to comply with current chapter 8 and Safety at Street Works and RoadWork's (A code of practice).
b. All road markings and signage to conform to the Traffic Signs Regulations and General Directions 2016.

This Drawing has been produced for the specific client and project as shown. It is not intended for any other purposes.



Old Pembroke Farm

CAMBRIDGESHIRE COUNTY COUNCIL

Laburnum Lane and Newham Lane, Burwell

(TEMPORARY PROHIBITION OF THROUGH TRAFFIC)

ORDER 2024-463

NOTICE is given that Cambridgeshire County Council has made an Order pursuant to the Road Traffic Regulation Act 1984, as amended by the Road Traffic (Temporary Restrictions) Act 1991, the effect of which is to stop any vehicle from proceeding along Laburnum Lane and Newham Lane, Burwell as lies between Pantile Lane and Hythe Lane; number 4 and Newnham Lane.

Access will be maintained to properties affected by this order.

The alternative route for vehicles is via The Causeway; Hythe Lane, Low Road and vice versa.

The Order is made to facilitate gas connection and associated works which are being carried out on or near this highway and it will come into operation on 7 April 2025 and continue until these works have finished or on the 6 October 2026 whichever is the earlier.

It is anticipated that these works will be carried out between 7 April and 11 April 2025.

The Order shall not apply to any persons lawfully engaged in connection with any works for which it is made, any member of the Police Force, Fire and Rescue Service, Ambulance Service, a vehicle being used by Special Forces during the execution of their duties or to any person acting with the permission or upon the direction of a Police Officer in uniform.

Frank Jordan, Executive Director, Place and Sustainability, New Shire Hall, Emery Crescent, Enterprise Campus, Alconbury Weald, Huntingdon, PE28 4YE

Wednesday 26 March 2025

Thank you for the response that you sent to the consultation on the County Council's Local Validation List earlier this month.

I have noted your comments on the complexity of applications and your request that developers provide a summary and overview document to assist with understanding planning proposals. Working in minerals and waste planning I understand how complex applications can be and although there are times when we could simplify descriptions and add useful informatives, this is not always possible. We will provide useful informatives on planning applications where we can and I always encourage the use of plain English, although there are times that we do have to use planning terminology.

In addition, most applications are supported by a Planning Statement or Design and Access Statement which usually provide the kind of summary that you are seeking. These documents often contain a list of plans and an explanation of what they show and this is something that we are already encouraging Planning agents to include and will continue to do so.

In the event that there are applications that you are being asked to comment on and they are still too complex to understand then please do contact the planning officer who is considering the application and ask them to explain the key points to you.

I hope you have found this information helpful.

Kind regards

Deborah Jeakins

Manager, County Planning, Minerals and Waste

07468 719657



Capital Highway Maintenance Programme 2025/2026

Place and Sustainability Works Programme Summary - Capital Maintenance & Improvement Programme 2025/26

Operating the Network		2025/26	
Capital maintenance and improvement programme allocations	Countywide	£	1,500,000
		£	1,500,000
Carriageway Maintenance	Cambridge	£	2,557,000
	East	£	2,366,000
	Fenland	£	8,466,300
	Huntingdonshire	£	4,711,000
	South	£	3,100,000
	Countywide	£	9,580,000
		£	30,780,300
Peat soil affected roads	East	£	2,000,000
		£	2,000,000
Footway and Cycle route maintenance	Cambridge	£	1,393,000
	East	£	298,000
	Fenland	£	302,000
	Huntingdonshire	£	1,270,000
	South	£	1,037,000
	Countywide	£	2,900,000
		£	7,200,000
Active Travel	Cambridge	£	195,000
	Huntingdonshire	£	280,000
	South	£	250,000
	Countywide	£	275,000
		£	1,000,000
Highway drainage and resilience	Fenland	£	685,000
	Huntingdonshire	£	2,145,000
	South	£	920,000
	Countywide	£	250,000
		£	4,000,000
Rights of Way	East	£	275,470
	Fenland	£	91,550
	Huntingdonshire	£	130,850
	South	£	162,036
	Countywide	£	75,094
		£	735,000

Bridge Strengthening	Cambridge	£	290,000
	East	£	1,100,000
	Fenland	£	865,000
	Huntingdonshire	£	75,000
	South	£	-
	Countywide	£	767,700
		£	3,097,700
Vehicle Restraint Systems (safety barriers)	Huntingdonshire	£	100,000
	South	£	70,000
	Countywide	£	230,000
			£
Traffic Signal Replacement	Cambridge	£	855,718
	Fenland	£	360,000
	Huntingdonshire	£	615,529
	South	£	34,721
	Countywide	£	342,732
			£
Future carriageway/footway/cycleway design, survey, investigation and network intelligence	Countywide	£	700,000
		£	700,000
Signs and Lines	Countywide	£	500,000
		£	500,000
Locally determined minor capital schemes	Cambridge	£	103,120
	East	£	103,120
	Fenland	£	103,120
	Huntingdonshire	£	103,120
	South	£	103,120
			£
Smarter Travel Management - Traffic Management Centre	Countywide	£	166,747
		£	166,747
A1307/A141 De trunked road maintenance		£	4,488,000
		£	4,488,000
Total Operating the Network		£	59,332,000

Highways Funding	2025/26	
DfT Operating the Network grant (needs & incentive)	£	12,429,000
DfT Pothole Action Fund (inc. DfT additional funding)	£	12,475,000
DfT Footpaths and Pavements	£	4,000,000
Highway Maintenance	£	3,500,000
HS2 (rolled forward)	£	440,000
Additional Highways Investment	£	20,000,000
A1307 de trunk improvement fund	£	6,488,000
Total Funding	£	59,332,000

Cambridge City Capital Maintenance and Improvement Programme

Carriageway Maintenance

Road Number	Parish/Town	Street	Location	Works	2025/26
C280	Cambridge	Mill Road	From junction with Great Eastern Street to junction with Brooks Road/ Perne Road (A1134)	Carriageway Resurfacing	£ 650,000
C280	Cambridge	Mill Road	From junction with Mortimer Road to Mill Road Community Centre	Carriageway Resurfacing	£ 350,000
C280	Cambridge	Parker Street	From junction with Emmanuel Road to junction with Park Terrace	Carriageway Resurfacing	£ 75,000
C291	Cambridge	Jesus Lane	Four Lamps roundabout including eastbound approaches	Carriageway Resurfacing	£ 210,000
A603	Cambridge	East Road	From Cambridge Community Fire and Rescue Station to junction with Norfolk Street	Carriageway Resurfacing	£ 270,000
C235	Cambridge	Cherry Hinton Road	From and including junction with Hills Road to number 32	Carriageway Resurfacing	£ 220,000
A603	Cambridge	Gonville Place	From junction with Regent Street/Hills Road/Lensfield Road to YMCA Hostel	Carriageway Resurfacing	£ 272,000
Unc	Cambridge	Round Church Street	Full length	Carriageway Resurfacing	£ 150,000
A10	Cambridge	Hauxton Road Roundabout	Worst sections	Carriageway Resurfacing	£ 360,000
Unc	Queen Ediths	Gunhild Close	Gunhild Way to end	Surface treatment	Included
Unc	Queen Ediths	Gunhild Court	Gunhild Way to end	Surface treatment	Included
Unc	Queen Ediths	Godwin Close	Godwin Way to end	Surface treatment	Included
Unc	Arbury	Perse Way	Carlton Way to Roseford Road	Surface treatment	Included
Unc	Coleridge	Coleridge Road	Mill Rd to Cherry Hinton Rd	Surface treatment	Included
Unc	Cherry Hinton	St Thomas Square	Walpole Road to St Thomas Rd	Surface treatment	Included
Unc	Cherry Hinton	St Thomas Road	Birdwood Rd to St Thomas Square	Surface treatment	Included
Unc	Arbury	Brimley Road	Carlton Way to Wyborne Close	Surface treatment	Included
Unc	Arbury	Redfern Close	Brimley Road to end	Surface treatment	Included
Unc	Arbury	Durnford Way	Brimley Road to Brimley Rd	Surface treatment	Included
Unc	Arbury	Montgomery Road	Brimley Road to Alex Wood Rd	Surface treatment	Included
Unc	Arbury	Essex Close	Brimley Road to end	Surface treatment	Included
Unc	Arbury	Cunningham Close	Brimley Road to end	Surface treatment	Included
Unc	Arbury	Roland Close	Brimley Road to end	Surface treatment	Included
Unc	Arbury	Wavell Way	Brimley Road to end	Surface treatment	Included
Unc	Arbury	Wynborne Close	Brimley Road to end	Surface treatment	Included
Unc	Arbury	Harris Road	Perse Way to end	Surface treatment	Included

Unc	Queen Ediths	Gunhild Way	Wulfstan Way to end	Surface treatment	Included
Unc	Queen Ediths	Godwin Way	Wulfstan Way to Gunhild Way	Surface treatment	Included
Unc	Romsey	Suez Road	Radegund Rd to Coleridge Rd	Surface treatment	Included
Unc	East Chesterton	Evergreens	Green End Rd to end	Surface treatment	Included
Unc	Queen Ediths	Lilac Court	Cherry Hinton Rd to end	Preparation for surface treatments in 2026/27	Included
Unc	Kings Hedges	Campkin Road	Kings Hedges Rd to Arbury Rd	Preparation for surface treatments in 2026/27	Included

£ 2,557,000

Footway and Cycleway Maintenance

Road Number	Parish/Town	Street	Location	Works	2025/26
Unc	Cambridge	Market Street	Market Place to Sydney Street, including part of drainage in Market Place	Drainage, kerb and footway improvements - Paving and blockwork, remove ACO, improve drainage reinstate carriageway blockwork	£ 523,000
C290	Cambridge	St Andrews Street	Sydney Street gate to taxi bays	Relay/replace slabs with blockwork	£ 70,000
Unc	Cambridge	Suez/Hobart/Madras/Marmora Road/s	Estate area - phase 2	Footway resurfacing	£ 680,000
Various	Cambridge	Various City Centre footways	Various	Footway repairs	£ 120,000
Unc	Cambridge	Litchfield Road	Length	Footway Slurry Seal	included
Unc	Cambridge	Coleridge Road	Length	Footway Slurry Seal	included
Unc	Cambridge	Spalding Way	Length	Footway Slurry Seal	included
Unc	Cambridge	Tilyard Way	Length	Footway Slurry Seal	included
Unc	Cambridge	Topcliffe Way	Length	Footway Slurry Seal	included
Unc	Cambridge	Hobart Road	Length	Footway Slurry Seal	included
Unc	Cambridge	Cowper Road	Length	Footway Slurry Seal	included
Unc	Cambridge	Neville Road	Length	Footway Slurry Seal	included
Unc	Cambridge	Leet Road	Length	Footway Slurry Seal	included
Unc	Cherry Hinton	Furnlea Close	Length	Footway Slurry Seal	included
Unc	Cambridge	Windsor Road	Length	Footway Slurry Seal	included
Unc	Cambridge	Orchard Estate	Length	Footway Slurry Seal	included
Unc	Cambridge	Worts Causeway	Length	Footway Slurry Seal	included
Unc	Cambridge	Warren Road	Length	Footway Slurry Seal	included
Unc	Cambridge	Ventress Close	Length	Footway Slurry Seal	included
Unc	Cambridge	Field Way	Length	Footway Slurry Seal	included
Unc	Cambridge	Suez Road	Length	Footway Slurry Seal	included
Unc	Cambridge	Hulat Road	Length	Footway Slurry Seal	included
Unc	Cambridge	Buckingham Road	Length	Footway Slurry Seal	included
Unc	Cambridge	Bowers Croft	Length	Footway Slurry Seal	included
Unc	Cambridge	Bergholt Close	Length	Footway Slurry Seal	included

Unc	Cambridge	Coggeshall Close	Length	Footway Slurry Seal	included
Unc	Cambridge	The Rodings	Length	Footway Slurry Seal	included
Unc	Cambridge	Brentwood Close	Length	Footway Slurry Seal	included
Unc	Cambridge	Chigwell Court	Length	Footway Slurry Seal	included
Unc	Cambridge	Almoners Way	Length	Footway Slurry Seal	included
Unc	Cambridge	Beaumont Crescent	Length	Footway Slurry Seal	included
Unc	Cambridge	Beaumont Road	Length	Footway Slurry Seal	included
Unc	Cambridge	Chalk Grove	Length	Footway Slurry Seal	included
Unc	Cambridge	Goodwin Way	Length	Footway Slurry Seal	included
Unc	Cambridge	Gunhild Close	Length	Footway Slurry Seal	included
Unc	Cambridge	Gunhild Court	Length	Footway Slurry Seal	included
Unc	Cambridge	Gunhild Way	Length	Footway Slurry Seal	included
Unc	Cambridge	Herons Close	Length	Footway Slurry Seal	included
Unc	Cambridge	Kinnard Way	Length	Footway Slurry Seal	included
Unc	Cambridge	Maners Way	Length	Footway Slurry Seal	included
Unc	Cambridge	Netherhall Way	Length	Footway Slurry Seal	included
Unc	Cambridge	Nightingale Avenue	Length	Footway Slurry Seal	included
Unc	Cambridge	Fison Road	Length	Preparation for surface treatments in following year	included
Unc	Cambridge	Anns Road	Length	Preparation for surface treatments in following year	included
Unc	Cambridge	Rachel Road	Length	Preparation for surface treatments in following year	included
Unc	Cambridge	Dennis Road	Length	Preparation for surface treatments in following year	included
Unc	Cambridge	Thorpe Way	Length	Preparation for surface treatments in following year	included
Unc	Cambridge	Jack Warren Green	Length	Preparation for surface treatments in following year	included
Unc	Cambridge	Coniston Road	Length	Preparation for surface treatments in following year	included
Unc	Cambridge	Fraser Road	Length	Preparation for surface treatments in following year	included
Unc	Cambridge	Chesterfield Road	Length	Preparation for surface treatments in following year	included
Unc	Cambridge	Fendon Road	Length	Preparation for surface treatments in following year	included
Unc	Cambridge	Fishers Lane	Length	Preparation for surface treatments in following year	included
Unc	Cambridge	Wenvoe Close	Length	Preparation for surface treatments in following year	included
Unc	Cambridge	Arran Close	Length	Preparation for surface treatments in following year	included
Unc	Cambridge	Pen Close	Length	Preparation for surface treatments in following year	included
Unc	Cambridge	Shepards Close	Length	Preparation for surface treatments in following year	included
Unc	Cambridge	Colville Road	Length	Preparation for surface treatments in following year	included
Unc	Cambridge	Bridewell Road	Length	Preparation for surface treatments in following year	included
Unc	Cambridge	Keates Road	Length	Preparation for surface treatments in following year	included
Unc	Cambridge	Drayton Road	Length	Preparation for surface treatments in following year	included
Unc	Cambridge	Drayton Close	Length	Preparation for surface treatments in following year	included
Unc	Cambridge	Mallets Road	Length	Preparation for surface treatments in following year	included
Unc	Cambridge	Montrose Close	Length	Preparation for surface treatments in following year	included
Unc	Cambridge	Lady Jane Court	Length	Preparation for surface treatments in following year	included
Unc	Cambridge	Jackson Road	Length	Preparation for surface treatments in following year	included
Unc	Cambridge	Buchan Street	Length	Preparation for surface treatments in following year	included
Unc	Cambridge	Callendar Close	Length	Preparation for surface treatments in following year	included

Unc	Cambridge	Jedburgh Close	Length	Preparation for surface treatments in following year	included
Unc	Cambridge	Banff Close	Length	Preparation for surface treatments in following year	included
Unc	Cambridge	Caledon Way	Length	Preparation for surface treatments in following year	included
					£ 1,393,000
Active Travel maintenance					
Road Number	Parish/Town	Street	Location	Works	2025/26
Unc	Cambridge	Tenison Road	At Mill Road toward Rail Station	Replace damaged paving slabs	£ 13,000
C290	Cambridge	St Andrews Street	Nr Bus Station - place to place	Relay/replace slabs	£ 182,000
					£ 195,000
Locally determined minor capital schemes					
Road Number	Parish/Town	Street	Location	Works	2025/26
Various locations to be determined within year					£ 103,120
					£ 103,120
Bridge Strengthening					
Road Number	Parish/Town	Street	Location	Works	2025/26
F	Cambridge	Coldhams Lane	Coldhams Lane Cycleway bridge	Repair/replace bearings and address settlement	£ 250,000
A603	Cambridge	Barton Road	Bin Brook retaining wall	Design of new structure	£ 40,000
					£ 290,000
Vehicle Restraint Systems (safety barriers)					
Road Number	Parish/Town	Street	Location	Works	2025/26
A1303	Cambridge	Madingley Road	Junction 13 of M11 around slip roads	Design for future years replacement	£ -
					£ -
Traffic Signal Replacement					
Road Number	Parish/Town	Street	Location	Works	2025/26
Unc	Cambridge	Brookgate	Brookgate off Hills Road		£ 50,000
C296	Cambridge	Trumpington Street	Trumpington Street near the labs	Refurbish crossing	£ 34,721
C291	Cambridge	Jesus Lane	Jesus Lane / Park Street / Malcolm Street	Refurbish junction	£ 55,000
C280	Cambridge	Parkside	Parkside/Clarendon Street/Parker Street/Park Terrace	Refurbish junction	£ 125,000
C279	Cambridge	Green End Road	Green End Road Near Kendal Way / Franks Lane	Refurbish crossing	£ 34,721
C279	Cambridge	Green End Road	Green End Road Near Camsight	Refurbish crossing	£ 34,721
Unc	Cambridge	Grange Road	Grange Road / Adams Road / Burrells Walk	Refurbish junction	£ 160,000
A1134	Cambridge	Queens Road	Queens Road near Garrett Hostel Lane	Refurbish crossing	£ 78,790
C235	Cambridge	Cherry Hinton Road	Cherry Hinton Road Near Perne Road	Refurbish crossing	£ 62,765
A1134	Cambridge	Trumpington Road	Trumpington Road near Newton Road	Refurbish crossing	£ 55,000
A1134	Cambridge	Perne Road	Perne Road near Cherry Hinton Road	Refurbish crossing	£ 55,000

A1309	Cambridge	Trumpington High Street	Trumpington High Street / Church Lane	Refurbish junction	£ 110,000
					£ 855,718
Signs and Lines					
Road Number	Parish/Town	Street	Location	Works	2025/26
A1134/ A1303	Cambridge	Newmarket Road	Godestone Road	Lining Refresh	included
A1134/ A1303	Cambridge	Newmarket Road	Stanley Road	Lining Refresh	included
A1134/ A1303	Cambridge	Newmarket Road	Garlic Row	Lining Refresh	included
A1134/ A1303	Cambridge	Newmarket Road	Swanns Road	Lining Refresh	included
A1134/ A1303	Cambridge	Newmarket Road	Ditton Walk	Lining Refresh	included
A1134/ A1303	Cambridge	Newmarket Road	Ditton Fields	Lining Refresh	included
A1134/ A1303	Cambridge	Newmarket Road	Ditton Lane	Lining Refresh	included
A1134/ A1303	Cambridge	Newmarket Road	Service Road	Lining Refresh	included
A1134/ A1303	Cambridge	Newmarket Road	Maldon Road	Lining Refresh	included

A1134/ A1303	Cambridge	Newmarket Road	Quainten Close	Lining Refresh	included
A1134/ A1303	Cambridge	Newmarket Road	Whitehall Road	Lining Refresh	included
A1134/ A1303	Cambridge	Newmarket Road	East Road	Lining Refresh	included
A1134/ A1303	Cambridge	Newmarket Road	Wellington Street	Lining Refresh	included
A1134/ A1303	Cambridge	Newmarket Road	Fair Street	Lining Refresh	included
A1134/ A1303	Cambridge	Newmarket Road	Brunswick Terrace	Lining Refresh	included
A10	Cambridge	Hauxton Road	roundabout	Lining Refresh	included
A603	Cambridge	East Road	Norfolk Street to Mill Road	Lining Refresh	included

East Cambridgeshire Capital Maintenance and Improvement Programme

Carriageway Maintenance

Road Number	Parish/Town	Street	Location	Works	2025/26
Unc	Ely	The Gallery	From The Bishop's House to junction with Silver Street	Carriageway Resurfacing	£ 68,000
B1102	Isleham	Mildenhall Road	From construction joint before S-bend to county boundary	Carriageway Resurfacing	£ 232,000
C140	Ely	Broad Street	From junction with Back Hill to junction with Cardinals Way	Carriageway Resurfacing	£ 140,000
B1411	Little Downham	Hundred Foot Bank	From junction with Downham footpath 3 to county boundary	Carriageway Reconstruction	£ 862,000
Unc	Stuntney	Stuntney Causeway	From junction with A142 to Anchor Lodge	Carriageway Resurfacing	£ 132,000
Unc	Littleport	Ponts Hill	Entire Road	Carriageway Resurfacing	£ 102,000
C141	Soham	Great Fen Road	From Newlands Bungalow to junction with Chapel Lane	Carriageway Recycling	£ 830,000
Unc	Ely	Kings Avenue	Throughout road	Carriageway Resurfacing	£ 300,000
Unc	Little Downham	Kiln Close	Orchard Estate to end	Surface treatment	Included
B1061	Burrough Green	Bradley Road	Road narrows to County Boundary	Surface treatment	Included
Unc	Little Downham	Orchard Estate	Lawn Lane to Kiln Close	Surface treatment	Included
Unc	Ely	High Barns	Deacons lane to Kings Avenue	Surface treatment	Included
A10	Ely	Cambridge Road	A142 to Lt Thetford	Surface treatment	Included
C125	Coveney	Main Street	Long Causeway to Gravel End	Surface treatment	Included
C228	Stetchworth	Hal Farm	A1304 to B1061	Surface treatment	Included
C154	Wilburton	Pools Road	Grunty Fen to Church Road	Surface treatment	Included
C222	Dullingham	Station Road	A1304 to B1061	Surface treatment	Included
Unc	Fordham	Murfitts Lane	Carter St to Soham Rd	Surface treatment	Included
C148	Chippenham	Snailwell Road	Chippenham to Snailwell	Surface treatment	Included
B1063	Newmarket	Ashley Road	Suffolk boundary to Cheveley 30 limit	Preparation for surface treatments in following year	Included
B1063	Cheveley	Newmarket Road	30 limit to 30 limit	Preparation for surface treatments in following year	Included
Unc	Littleport	Anchor Court	Victoria Street to end	Preparation for surface treatments in following year	Included
C229	Kirtling	Malting End	Bradley Rd to Woodditton Rd	Preparation for surface treatments in following year	Included
Unc	Cheveley	Moulton Road	B1063 to Suffolk Boundary	Preparation for surface treatments in following year	Included
B1063	Ashley	High Street	30mph to Upend Rd	Preparation for surface treatments in following year	Included
C230	Kirtling	Newmarket Road	30 Saxon St to The Street	Preparation for surface treatments in following year	Included
C229	Kirtling	Mill Road	Cowlinge Rd to Bradley Rd	Preparation for surface treatments in following year	Included
Unc	Kirtling	The Street	Woodditton Rd to Cowlinge Rd	Preparation for surface treatments in following year	Included
Unc	Littleport	Fishers Bank	Padnal to end	Preparation for surface treatments in following year	Included
Unc	Littleport	Sandy's Crescent	Anchor Court to Anchor Court	Preparation for surface treatments in following year	Included
Unc	Littleport	The Brambles	Eastfields to end	Preparation for surface treatments in following year	Included

B1063	Ashley	Silverley	Upend Rd to Suffolk Boundary	Preparation for surface treatments in following year	Included
B1061	Dullingham	Brinkley Road	Station Rd to Eagle Lane	Preparation for surface treatments in following year	Included
C129	Little Downham	Station Road	Lawn Lane to Black Bank Rd	Preparation for surface treatments in following year	Included
B1411	Little Downham	High Road	Tower Rd to Mill Hill	Preparation for surface treatments in following year	Included
Unc	Sutton	Sutton Court	Church Lane to end	Preparation for surface treatments in following year	Included
A1304	Dullingham	London Road	A1303 to 30mph	Preparation for surface treatments in following year	Included
Unc	Soham	Centre Road	A1123 to Fordham Rd	Preparation for surface treatments in following year	Included

£ 2,366,000

Peat soil affected roads

Road Number	Parish/Town	Street	Location	Works	2025/26
B1104	Isleham	Prickwillow Road	Two sections of defective road	Reconstruction, some sections of concrete rd.	£ 1,000,000
B1411	Pymoor	Straight Furlong	Throughout road	Reconstruction	£ 1,000,000

£ 2,000,000

Footway and Cycleway Maintenance

Road Number	Parish/Town	Street	Location	Works	2025/26
C151	Littleport	Woodfen Road	Wisbech Road to Parsons Lane	Footway resurfacing - place to place	£ 150,000
Unc	Sutton	Station Road	From end of houses to industrial park	Footway resurfacing/widen to min 1.5m	£ 110,000
Unc	Ely	Upherds Lane	Adopted length only from Downham Rd	Realign kerbs and resurface footway	£ 38,000
Unc	Ely	Norfolk Road	Length	Footway Slurry Seal	included
B1411	Ely	Downham Road	Length	Footway Slurry Seal	included
Unc	Haddenham	Station Road	Length	Footway Slurry Seal	included
B1411	Little Downham	Main Street	Length	Footway Slurry Seal	included
Unc	Ely	Suffolk Close	Length	Footway Slurry Seal	included
Unc	Ely	Leicester Close	Length	Footway Slurry Seal	included
Unc	Ely	Hereward Street	Length	Footway Slurry Seal	included
Unc	Ely	Churchill Close	Length	Footway Slurry Seal	included
Unc	Ely	Etheldreda Street	Length	Footway Slurry Seal	included
Unc	Little Downham	Holme Lane	Length	Footway Slurry Seal	included
Unc	Little Downham	Martins Lane	Length	Footway Slurry Seal	included
Unc	Ely	Northampton Close	Length	Footway Slurry Seal	included
Unc	Ely	Yorke Way	Length	Footway Slurry Seal	included
Unc	Ely	Hertford Close	Length	Footway Slurry Seal	included
Unc	Ely	Debden Green	Length	Footway Slurry Seal	included
Unc	Ely	St Olvins Green	Length	Footway Slurry Seal	included
Unc	Ely	Fieldside	Length	Footway Slurry Seal	included

Unc	Little Downham	Matthew Wren Close	Length	Footway Slurry Seal	included
Unc	Little Downham	Bury Green	Length	Footway Slurry Seal	included
Unc	Little Downham	Pond Lane	Length	Footway Slurry Seal	included
Unc	Little Downham	Cross Lane	Length	Footway Slurry Seal	included
Unc	Ely	Benedict Street	Length	Footway Slurry Seal	included
Unc	Ely	Kent Close	Length	Footway Slurry Seal	included
Unc	Ely	Althorp Court	Length	Footway Slurry Seal	included
Unc	Ely	Beech Lane	Length	Footway Slurry Seal	included
Unc	Little Thetford	Holt Fen	Length	Footway Slurry Seal	included
Unc	Ely	Northwold	Length	Footway Slurry Seal	included
Unc	Ely	Christopher Tye Close	Length	Footway Slurry Seal	included
Unc	Fordham	Thirlwall Drive	Length	Footway Slurry Seal	included
Unc	Fordham	Newport Avenue	Length	Footway Slurry Seal	included
Unc	Soham	Bushell Lane	Length	Footway Slurry Seal	included
Unc	Sutton	Cromwell Road	Length	Footway Slurry Seal	included
Unc	Woodditton	Stretton Avenue	Length	Footway Slurry Seal	included
Unc	Ely	Merlin Drive	Length	Preparation for surface treatments in following year	included
Unc	Ely	Lynn Road	Length	Preparation for surface treatments in following year	included
Unc	Ely	St Audreys Way	Length	Preparation for surface treatments in following year	included
Unc	Ely	Back Hill	Length	Preparation for surface treatments in following year	included
Unc	Ely	Upherds Lane	Length	Preparation for surface treatments in following year	included
Unc	Prickwillow	Main Street	Length	Preparation for surface treatments in following year	included
Unc	Sutton in the Isle	The Row	Length	Preparation for surface treatments in following year	included
Unc	Isleham	Sun Street	Length	Preparation for surface treatments in following year	included
Unc	Isleham	Fordham Road	Length	Preparation for surface treatments in following year	included
Unc	Isleham	Mill Street	Length	Preparation for surface treatments in following year	included
Unc	Isleham	Maltings Lane	Length	Preparation for surface treatments in following year	included
Unc	Isleham	Robins Close	Length	Preparation for surface treatments in following year	included
Unc	Isleham	Bowers Lane	Length	Preparation for surface treatments in following year	included
Unc	Stitchwort	Ley Road	Length	Preparation for surface treatments in following year	included
Unc	Stetchworth	Strollers Way	Length	Preparation for surface treatments in following year	included
Unc	Stetchworth	Cooper Close	Length	Preparation for surface treatments in following year	included
Unc	Stetchworth	High Street	Length	Preparation for surface treatments in following year	included
Unc	Stetchworth	Tea Kettle Lane	Length	Preparation for surface treatments in following year	included
Unc	Bottisham	Pound Close	Length	Preparation for surface treatments in following year	included
Unc	Bottisham	Bell Road	Length	Preparation for surface treatments in following year	included
Unc	Bottisham	Bradfords Close	Length	Preparation for surface treatments in following year	included
Unc	Bottisham	Arber Close	Length	Preparation for surface treatments in following year	included
Unc	Bottisham	Peacock Drive	Length	Preparation for surface treatments in following year	included
Unc	Bottisham	Tunbridge Lane	Length	Preparation for surface treatments in following year	included

Unc	Burwell	Hatley Drive	Length	Preparation for surface treatments in following year	included
Unc	Burwell	Chandlers Court	Length	Preparation for surface treatments in following year	included
Unc	Burwell	Kingfisher Drive	Length	Preparation for surface treatments in following year	included
Unc	Burwell	Toyse Lane	Length	Preparation for surface treatments in following year	included
Unc	Burwell	The Avenue	Length	Preparation for surface treatments in following year	included
Unc	Kennett	Chapel Lane	Length	Preparation for surface treatments in following year	included
Unc	Kennett	The Close	Length	Preparation for surface treatments in following year	included
Unc	Kennett	Dane Hill Road	Length	Preparation for surface treatments in following year	included
Unc	Ashley	The Orchard	Length	Preparation for surface treatments in following year	included
Unc	Ashley	Silverley Way	Length	Preparation for surface treatments in following year	included
Unc	Ashley	Mill Road	Length	Preparation for surface treatments in following year	included
Unc	Ashley	Church Street	Length	Preparation for surface treatments in following year	included
Unc	Dullingham	Brinkley Road	Length	Preparation for surface treatments in following year	included
Unc	Dullingham	Station Road	Length	Preparation for surface treatments in following year	included
Unc	Fordham	Collins Hill	Length	Preparation for surface treatments in following year	included
Unc	Fordham	Sharmans Road	Length	Preparation for surface treatments in following year	included

£ 298,000

Locally determined minor capital schemes

Road Number	Parish/Town	Street	Location	Works	2025/26
-------------	-------------	--------	----------	-------	---------

Various locations to be determined within year

£ 103,120

£ 103,120

Bridge Strengthening

Road Number	Parish/Town	Street	Location	Works	2025/26
A142	Ely	Ely Southern Bypass	Rail and River Ouse viaduct	Design, inspection and drainage surveys	£ 100,000
F	Burwell	FP6/NCN11	Burwell High Bridge	Replace NMU bridge	£ 1,000,000
F	Sutton	Sutton Gault	Sutton Gault Footbridge	Redeck design	£ -

£ 1,100,000

Rights of Way

Road Number	Parish/Town	ROW	Location	Works	2025/26
Various	Ely, Soham, Little Thetford, Wicken, Stretham, Swaffham Prior, Swaffham Bulbeck, Lode	Footpath, Bridleway, Byway	Fen Rivers Way: Waterbeach to Ely	Fen Rivers Way: Improve accessibility and ongoing maintenance through replacing gates with mobility Kissing Gates and repairing surface where necessary.	£ 32,700
Various	Reach, Burwell, Swaffham Prior, Stetchworth, Woodditton,	Footpath	Devil's dyke	Remove scrub & treat stumps on Devil's Dyke: Establishing PROW Surface along top of Devil's Dyke bank, which can be maintained within the ecological constraints.	£ 49,130

BR13	Dullingham	Bridleway		Repair surface eroded by flooding and improve drainage	£ 5,450
Various Byways	Various	Byway		Ensure all gates and restricted access points are BS5709 compliant. Scrub clearance around access points, creating legal minimum width gaps where required, ensuring safe level ground for access	£ 65,500
FP45, 53, 102	Soham	Footpath		Restricted width urban footpath Significant clearance of encroaching vegetation improvement to surface where required	£ 10,900
BY27	Soham	Byway		repair surface with road planings	£ 4,360
FP9	Wilburton	Footpath		Clear encroaching and surface vegetation: Repair surface as appropriate	£ 3,270
FP10	Mepal	Footpath		Repair surface with Recycled Road Planings	£ 7,640
Various	Haddenham, Little Thetford, Stretham, Wilburton,	Footpath	Ouse Valley Way from Earith to link up with Fen Rivers Way at Fish & Duck Marina:	improve accessibility and ongoing maintenance through replacing stiles / kissing gates, clearing and repairing surface where appropriate	£ 38,200
BY13	Stretham	Byway		Clear back encroaching vegetation, repair significant rutting with recycled road planings	£ 16,350
BY20	Soham	Byway		Clear back encroaching vegetation at pinch point and planings down on short section used by Game Farm vehicles.	£ 2,180
BY10	Witchford	Byway		Fill low spots with recycled aggregate and top off with road planings	£ 3,270

BY92	Soham	Byway		Address drainage issues and reprofile Byway surface	£ 16,350
BY12	Stretham	Byway		Repair surface of badly rutted Byway	£ 16,350
FP13	Littleport	Footpath		Replace narrow gates and stiles with mobility kissing gates	£ 3,820
					£ 275,470

Signs and Lines

Road Number	Parish/Town	Street	Location	Works	2025/26
A1123	Haddenham	Earith Bridge	junction	Lining Refresh	included
Unc	Ely	Lisle Lane	junctions	Lining Refresh	included
A142	Sutton	A142	A142 roundabout	Lining Refresh	included
A1123	Stretham	Wilburton Road	Pedestrian Crossing	Lining Refresh	included
B1382	Ely	Prickwillow Road	junctions	Lining Refresh	included
C315	Ely	Lynn Road	box jnt with Nutholt Lane	Lining Refresh	included
B1381	Sutton	The Brook	High Street junction	Lining Refresh	included
Unc	Ely	Brays Lane	junctions	Lining Refresh	included
A10	Ely	Downham Road		Lining Refresh	included
B1061	Burrough Green	Bradley Road	school keep clear plus jnts	Lining Refresh	included
C222	Stetchworth	Tea Kettle Lane	school keep clear plus jnts	Lining Refresh	included
C315	Ely	Lynn Road	zebra crossing and jnts	Lining Refresh	included
C315	Littleport	Ely Road	No 94 to junction	Lining Refresh	included
Unc	Littleport	Wisbech Road	BP garage entry	Lining Refresh	included
B1411	Little Downham	Main Street	outside school	Lining Refresh	included
B1049	Cottenham	Twenty Pence Road		Lining Refresh	included
C317	Ely	Back Hill	Mini roundabout at Barton Road	Lining Refresh	included
Unc	Littleport	Wellington Street	Jnt Wisbech Road	Lining Refresh	included
Unc	Littleport	The Moorings	Lynn Road junction	Lining Refresh	included
A142	Sutton	Ely Road	Ely road roundabout	Lining Refresh	included
A1123	Haddenham	Wilburton Road	New Road	Lining Refresh	included
B1049	Wilburton	Twenty Pence Road	High Street	Lining Refresh	included
A142	Fordham	Fordham Road	replace chevreflex	Signs	included
Unc	Ely	Angel Square	mini roundabout	Lining Refresh	included
C228	Stetchworth	High Street	jnt Tea Kettle Lane	Lining Refresh	included
Unc	Folksworth	Townshend Way	Jnt Washingley Road	Lining Refresh	included
Unc	Ely	New Barns Lane	Jnt Deacons Lane	Lining Refresh	included
C216	Bottisham	High Street	throughout	Lining Refresh	included
Unc	Littleport	Anchor Court	Victoria Street junction	Lining Refresh	included
Unc	Littleport	Hitches Street	Wellington Street junction	Lining Refresh	included
Unc	Littleport	Padnal	Victoria Street junction	Lining Refresh	included
Unc	Littleport	Sandhill	Victoria Street junction	Lining Refresh	included
C151	Littleport	Woodfen Road	Wisbech Road	Lining Refresh	included

Unc	Littleport	Church Lane	Wisbech Road	Lining Refresh	included
C128	Coveney	School Lane	Main Street	Lining Refresh	included
Unc	Wilburton	Car Pond Road	High Street	Lining Refresh	included
B1102	Burwell	Ness Road	mini roundabout	Lining Refresh	included
C315	Ely	St Mary's Street		Lining Refresh	included
C218	Ely	West Fen Road	roundabout	Lining Refresh	included
Unc	Wilburton	Clarks Lane	High Street	Lining Refresh	included
C130	Little Downham	Main Drove	Downham Common	Lining Refresh	included
B1063	Newmarket	Ashley Road	speed bumps	Lining Refresh	included
A142	Stuntney	Stuntney Causeway	throughout	Lining Refresh	included
Unc	Littleport	Parsons Lane	St Georges Medical Centre	Lining Refresh	included
Unc	Littleport	Upton Lane	Parsons Lane	Lining Refresh	included
Unc	Littleport	Parsons Lane	Woodfen Road	Lining Refresh	included
Unc	Littleport	Lester Way	Wisbech Road	Lining Refresh	included
Unc	Littleport	Friars Way	Wisbech Road	Lining Refresh	included
Unc	Littleport	Washington Road	Camel Road	Lining Refresh	included
Unc	Littleport	Ponts Hill	Camel Road	Lining Refresh	included
Unc	Littleport	New Road	Camel Road	Lining Refresh	included
Unc	Little Downham	Eagles Lane	Main Street	Lining Refresh	included
Unc	Sutton	Churchill Road	Ely Road	Lining Refresh	included
Unc	Stretham	Chapel Lane	Chapel Street	Lining Refresh	included
Unc	Stretham	Pump Lane	Chapel Street	Lining Refresh	included
Unc	Stretham	Walnut Tree Close	High Street	Lining Refresh	included
Unc	Sutton	York Road	High Street	Lining Refresh	included
Unc	Sutton	West Lodge Lane	High Street	Lining Refresh	included
Unc	Little Downham	California	Lawn Lane	Lining Refresh	included
Unc	Little Downham	Second Drove	Downham Common	Lining Refresh	included
Unc	Little Downham	Fourth Drove	Main Drove	Lining Refresh	included
Unc	Stretham	Plantation Gate	Brook Lane	Lining Refresh	included
B1382	Prickwillow	Mile End Road	jnt Mildenhall Road	Lining Refresh	included
Unc	Littleport	City Road	Throughfare	Lining Refresh	included
Unc	Littleport	Friars Lane	Parsons Lane	Lining Refresh	included
Unc	Littleport	Wisbech Road	Co-op entry	Lining Refresh	included
C305	Soham	Fordham Road	throughout	Lining Refresh	included
Unc	Ely	High Barns	17-19 disabled bay refresh	Lining Refresh	included
C134	Queen Adelaide	Padnal Bank	Ely Road to Clayway bend	Lining Refresh	included
B1382	Prickwillow	Main Street	village entrance	Lining Refresh	included
Unc	Folksworth	Elm Road	Jnt Washingley Road	Lining Refresh	included
C315	Littleport	Station Road	Station entrance	Lining Refresh	included
Unc	Littleport	Wisbech Road	Black Bank to Bates Drove	Lining Refresh	included
C317	Ely	Station Road	at entrance to station	Lining Refresh	included
Unc	Earith	Meadow Lane		Lining Refresh	included

Fenland Capital Maintenance and Improvement Programme

Carriageway Maintenance

Road Number	Parish/Town	Street	Location	Works	2025/26
Unc	Chatteris	High Street	At Railway lane roundabout	Carriageway Resurfacing	£ 145,000
C311	Wisbech	Norwich Road	Churchill Road to Park St & Clarkson Avenue to Lerowe Road	Carriageway Resurfacing	£ 560,000
B1093	Manea	Station Road	Wimblington Road to Wisbech Road	Carriageway Resurfacing	£ 465,000
C73	March	Creek Road	From Mill View to St Johns Rd and Waterside Gds to Marsh Close	Carriageway Resurfacing	£ 350,000
C332	Chatteris	Bridge Street	From A142 roundabout to near pedestrian crossing	Carriageway Resurfacing	£ 320,000
A605	Coates	Coates Road	From The Fold to Minuet Gardens	Carriageway Resurfacing	£ 700,000
C13	Leverington	Gorefield Road	Mays Lane towards Fendyke	Carriageway Resurfacing	£ 500,000
C23	Wisbech	Ramnoth Road	Money Bank to Queen Elizabeth Drive	Carriageway Resurfacing	£ 300,000
C13	Gorefield	Harolds Bank	From Honeyhill Road to Black Lane	Carriageway Recycling	£ 480,000
B1093	Manea	Wimblington Road	From Boots Bridge to new surfacing joint	Carriageway Recycling	£ 780,000
Unc	Wisbech	Ollard Avenue	Full length	Carriageway Resurfacing	£ 100,000
Unc	Wisbech	St Michaels Avenue	Full length	Carriageway Resurfacing	£ 380,000
B1098	Chatteris	Sixteen Foot Bank	From Horesway to nr Broad Alder Farm	Carriageway Recycling	£ 1,261,300
C78	Doddington	Floods Ferry Road	From B1093 to bridge past factory - phase 1 of 2	Carriageway Recycling	£ 1,000,000
Unc	March	City Road	From Burrowmoor Road	Carriageway Resurfacing	£ 175,000
C32	Murrow	Black Drove	Full length	Carriageway Recycling	£ 550,000
C19	Parson Drove	Silvers Lane	Full length	Carriageway Recycling	£ 150,000
C80	Wimblington	Hook Road	From Eastwood End to farm	Carriageway Recycling	£ 90,000
Unc	Murrow	Cants Drove	Damaged areas near Gull Road	Carriageway Recycling	£ 160,000
Unc	Wisbech	Camargue Place	Arles Avenue to end	Surface treatment	included
Unc	Wisbech	Les Baux Place	Arles Avenue to end	Surface treatment	included
Unc	Wisbech	Rhone Place	Arles Avenue to end	Surface treatment	included
Unc	Wisbech	Provence Place	Arles Avenue to end	Surface treatment	included
Unc	Wisbech	Arles Avenue	Mansell Rd to end	Surface treatment	included
Unc	Wimblington	Fenland Close	King St to end	Surface treatment	included
Unc	Wimblington	Orchard Way	King St to end	Surface treatment	included
Unc	Whittlesey	Bellmans Grove	Bellmans Rd to end	Surface treatment	included
Unc	Wimblington	King Street	Norfolk St to A141	Surface treatment	included
B1165	Newton	High Road	30mph to River Bridge	Surface treatment	included
Unc	Whittlesey	Mountbatten Way	Bellmans Grove to end	Surface treatment	included
Unc	Whittlesey	Windsor Place	Bellmans Grove to end	Surface treatment	included
Unc	Whittlesey	Hawthorne Drive	New Rd to end	Surface treatment	included
C71	Turves	Burnthouse Road	March Rd to Cock Bank	Surface treatment	included

Unc	Gorefield	St Marks Road	High Road to end	Surface treatment	included
Unc	Whittlesey	Chestnut Crescent	Hawthorne Dr to Hawthorne Dr	Surface treatment	included
B1165	Tydd St Giles	Church Lane	High Road to Kirkgate	Surface treatment	included
Unc	Whittlesey	Commons Road	Stonald Rd to Stonald Ave	Surface treatment	included
Unc	Whittlesey	St Andrews Place	London St to end	Surface treatment	included
B1100	Tipps End	March Road	Fifty Road to Norfolk CC	Surface treatment	included
Unc	March	Cherrywood Avenue	Burrowmoor Road to end	Preparation for surface treatments in following year	Included
Unc	March	Conway Close	Cherrywood Ave to end	Preparation for surface treatments in following year	Included
Unc	March	Lewis Close	Cherrywood Ave to end	Preparation for surface treatments in following year	Included
Unc	March	Plowright Close	Cherrywood Ave to end	Preparation for surface treatments in following year	Included
Unc	Newton	Colville Road	Goodens Lane to end	Preparation for surface treatments in following year	Included
Unc	Whittlesey	Debdale Court	Sycamore Rd to end	Preparation for surface treatments in following year	Included
Unc	Chatteris	Birch Close	Birch Avenue to end	Preparation for surface treatments in following year	Included
Unc	March	West Close	Russell Ave to end	Preparation for surface treatments in following year	Included
Unc	March	East Close	Peyton Ave to end	Preparation for surface treatments in following year	Included
Unc	March	Birchwood Avenue	Burrowmoor Road to Butt Ave	Preparation for surface treatments in following year	Included
Unc	March	Brewin Avenue	Birchwood Ave to end	Preparation for surface treatments in following year	Included
B1165	Tydd St Giles	Cats Lane	Hockland Rd to Lincs boundary	Preparation for surface treatments in following year	Included
Unc	Doddington	Manor Estate (inc Child Lane)	High St to end	Preparation for surface treatments in following year	Included
A1101	Leverington	Sutton Road	Dowgate to Parson Drove Lane	Preparation for surface treatments in following year	Included
C10	Tydd St Giles	Hockland Road	Church Lane to High Broadgate	Preparation for surface treatments in following year	Included
A141	March	Isle of Ely Way	Wisbech Rd to Wimblington Rd	Preparation for surface treatments in following year	Included
Unc	Chatteris	Birch Avenue	St Martins Rd to end	Preparation for surface treatments in following year	Included
Unc	March	Russell Avenue	Wisbech Rd to Norwood Rd	Preparation for surface treatments in following year	Included
Unc	March	Peyton Avenue	Russell Ave to Russell Ave	Preparation for surface treatments in following year	Included
Unc	March	Butt Avenue	Birchwood Avenue to end	Preparation for surface treatments in following year	Included

£ 8,466,300

Footway and Cycleway Maintenance

Road Number	Parish/Town	Street	Location	Works	2025/26
Unc	March	City Road	Burrowmoor Rd to end	Footway resurfacing	£ 92,000
Unc	Elm	Lime Avenue	Full road	Reconstruct concrete footway	£ 110,000
Unc	Wisbech	Verdun Road	Through Road	Footway resurface/minor kerb relay	£ 100,000
Unc	Wimblington	Addison Road	Length	Footway Slurry Seal	included
Unc	Wimblington	Church Street	Length	Footway Slurry Seal	included
Unc	Wimblington	King Street	Length	Footway Slurry Seal	included
Unc	Wimblington	Norfolk Street	Length	Footway Slurry Seal	included
Unc	Chatteris	Fen View	Length	Footway Slurry Seal	included
Unc	Wimblington	Morley Way	Length	Footway Slurry Seal	included
Unc	Wimblington	Waggoners Way	Length	Footway Slurry Seal	included
Unc	Wimblington	Governess Close	Length	Footway Slurry Seal	included
Unc	Wimblington	Woodys Field	Length	Footway Slurry Seal	included

Unc	Wimblington	Dobson Walk	Length	Footway Slurry Seal	included
Unc	Wimblington	Parkfield Lane	Length	Footway Slurry Seal	included
Unc	March	Cavalry Drive	Length	Footway Slurry Seal	included
Unc	Wimblington	Chapel Lane	Length	Footway Slurry Seal	included
Unc	Wimblington	Eaton Estate	Length	Footway Slurry Seal	included
Unc	Wimblington	Meadow Way	Length	Footway Slurry Seal	included
Unc	Wimblington	Morton Way	Length	Footway Slurry Seal	included
Unc	Wimblington	Norman Way	Length	Footway Slurry Seal	included
Unc	Wimblington	Orchard Way	Length	Footway Slurry Seal	included
Unc	Wimblington	Meadow Way South	Length	Footway Slurry Seal	included
Unc	Wimblington	Fenland Close	Length	Footway Slurry Seal	included
Unc	Chatteris	Wood Street	Length	Footway Slurry Seal	included
Unc	Whittlesey	Blunts Lane	Length	Footway Slurry Seal	included
Unc	Whittlesey	Irving Burgess Close	Length	Footway Slurry Seal	included
Unc	March	The Greys	Length	Footway Slurry Seal	included
Unc	Whittlesey	Priors Road	Length	Footway Slurry Seal	included
Unc	Friday Bridge	Maltmas Lane	Length	Footway Slurry Seal	included
Unc	Chatteris	Glebe Close	Length	Footway Slurry Seal	included
Unc	Chatteris	St Martins Road	Length	Footway Slurry Seal	included
Unc	Wisbech	York Road	Length	Footway Slurry Seal	included
Unc	Wisbech	Money Bank	Length	Preparation for surface treatments in following year	included
Unc	Wisbech	Boyces Road	Length	Preparation for surface treatments in following year	included
Unc	Wisbech	Norwich Road	Length	Preparation for surface treatments in following year	included
Unc	Wisbech	Ramnoth Road	Length	Preparation for surface treatments in following year	included
Unc	Wisbech	Mount Pleasant Road	Length	Preparation for surface treatments in following year	included
Unc	Wisbech	Colville Road	Length	Preparation for surface treatments in following year	included
Unc	Wisbech	Kinderley Road	Length	Preparation for surface treatments in following year	included
Unc	Wisbech	Tindall Close	Length	Preparation for surface treatments in following year	included
Unc	Wisbech	Algores Way	Length	Preparation for surface treatments in following year	included
Unc	Wisbech	Leverington Road	Length	Preparation for surface treatments in following year	included
Unc	Wisbech	Second Avenue	Length	Preparation for surface treatments in following year	included
Unc	Wisbech	Third Avenue	Length	Preparation for surface treatments in following year	included
Unc	Wisbech	Fourth Avenue	Length	Preparation for surface treatments in following year	included
Unc	Wisbech	Fifth Avenue	Length	Preparation for surface treatments in following year	included
Unc	Wisbech	Sixth Avenue	Length	Preparation for surface treatments in following year	included
Unc	Wisbech	Seventh Avenue	Length	Preparation for surface treatments in following year	included
Unc	Wisbech	Eighth Avenue	Length	Preparation for surface treatments in following year	included
Unc	Wisbech	William Road	Length	Preparation for surface treatments in following year	included
Unc	Chatteris	New Road	Length	Preparation for surface treatments in following year	included
Unc	Chatteris	Doddington Road	Length	Preparation for surface treatments in following year	included
Unc	Chatteris	Fairway	Length	Preparation for surface treatments in following year	included
Unc	Chatteris	The Shrubbery	Length	Preparation for surface treatments in following year	included
Unc	Friday Bridge	March Road	Length	Preparation for surface treatments in following year	included
Unc	Elm	High Road	Length	Preparation for surface treatments in following year	included

Unc	Doddington	Newgate Street	Length	Preparation for surface treatments in following year	included
Unc	Doddington	High Street	Length	Preparation for surface treatments in following year	included
Unc	Doddington	New Street	Length	Preparation for surface treatments in following year	included
Unc	March	Truemans Avenue	Length	Preparation for surface treatments in following year	included
Unc	March	Wigstones Road	Length	Preparation for surface treatments in following year	included
Unc	Parsons Drove	Main Road	Length	Preparation for surface treatments in following year	included
Unc	Tydd St Giles	High Broadgate	Length	Preparation for surface treatments in following year	included
Unc	Tydd St Giles	Hockland Road	Length	Preparation for surface treatments in following year	included
Unc	Tydd St Giles	Hannath Road	Length	Preparation for surface treatments in following year	included
Unc	Tydd St Giles	Church Lane	Length	Preparation for surface treatments in following year	included
Unc	Tydd St Giles	Newgate Road	Length	Preparation for surface treatments in following year	included
Unc	Tydd St Giles	Kirkgate	Length	Preparation for surface treatments in following year	included
Unc	Leverington	Perry Road	Length	Preparation for surface treatments in following year	included
Unc	Leverington	Seafield Road	Length	Preparation for surface treatments in following year	included
Unc	Benwick	High Street	Length	Preparation for surface treatments in following year	included

£ 302,000

Highway Drainage and resilience

Road Number	Parish/Town	Street	Location	Works	2025/26
Unc	March	Butt/Brewin Avenue	Throughout road	Drainage investigation and design only	£ 25,000
C32	Parson Drove	Fen Road	Along road	Drainage design and construction	£ 150,000
Unc	Chatteris	Eden Crescent	Throughout road	Drainage design and construction	£ 140,000
C14	Leverington	Roman Bank	Near Walnut Cottage	Drainage construction	£ 280,000
Unc	Gorefield	Gote Lane	At High Street junction	Drainage design and construction	£ 90,000

£ 685,000

Locally determined minor capital schemes

Road Number	Parish/Town	Street	Location	Works	2025/26
Various locations to be determined within year					£ 103,120

£ 103,120

Bridge Strengthening

Road Number	Parish/Town	Street	Location	Works	2025/26
A141	March	Wisbech Road	B1101 to Gaul Road	concrete repairs over rail bridge	£ 500,000
C70	Turves	Kingsland	Duncombes bridge	Design for future works	£ 40,000
Unc	March	Badgeney End	Death Fen bridge	Bridge Strengthening	£ 300,000
Unc	March	Nene Parade	Length	Survey and Fencing	£ 25,000

£ 865,000

Traffic Signal Replacement

Road Number	Parish/Town	Street	Location	Works	2025/26
A1101	Wisbech	Churchill Road	Churchill Road/Norwich Road	Refurbish junction	£ 180,000
B198	Wisbech	Lynn Road	Lynn Road / Walton Road	Refurbish junction	£ 180,000

Rights of Way

Maintaining the Rights of Way network

Road Number	Parish/Town	ROW	Location	Works	2025/26
FP12	Elm	Footpath		Manage badger sett on Elm FP 12 that's undermining Public Footpath	£ 16,350
FP 7	March	Footpath		Stripping surface of restrictive section of Hereward Way, lay geotextile, cover with compacted road planings	£ 19,600
FP20	Whittlesey	Footpath		Strip surface of narrow walkway and resurface with geotextile and compacted planings	£ 10,900
FP2	March	Footpath		Removing dangerous uneven slabs from surface of restricted section of urban PROW, replacing with bound gravel type surface	£ 19,600
BY30	March	Byway		1.7km Byway on Fenland soil. Subject to significant surface damage. Encroaching scrub clearance, assess most effective way to repair surface and deliver. Consider ongoing protection through a seasonal TRO	£ 25,100
					£ 91,550

Signs and Lines

Road Number	Parish/Town	Street	Location	Works	2025/26
A141	March	Wisbech Road	B1101 to Gaul Road	Lining Refresh	included
A605	Eastrea	Eastrea Road	Wype Road crossing	Lining Refresh	included
C73	March	Creek Road	Station Road jnt	Lining Refresh	included
C78	March	Knights End Road	Jnt Isle of Ely Way	Sign	included
A605	Whittlesey	Whitmore Road	crossing	Lining Refresh	included
B198	Wisbech	Lynn Road	Walton Road	Lining Refresh	included
A605	Whittlesey	West End	Hallcroft Road	Lining Refresh	included
C29	Whittlesey	Market Street	Eastgate	Lining Refresh	included
Unc	Whittlesey	Stonald Road	crossroads with Bassenhally	Lining Refresh	included
B1101	March	High Street	throughout	Lining Refresh	included
Unc	Elm	Gosmoor Lane	junctions	Lining Refresh	included
B1101	March	The Avenue	throughout	Lining Refresh	included
Unc	Wisbech	St Michaels Avenue	Walton Road	Lining Refresh	included
Unc	Wisbech	Ollard Road	Walton Road	Lining Refresh	included
Unc	Wisbech	Cherry Road	St Michaels Avenue	Lining Refresh	included
A605	Rings End	Goosetree Road	Rings End to Kingsland Farm	Lining Refresh	included
B1098	Chatteris	Sixteen Foot Bank	boots bridge to new road	Lining Refresh	included
C15	Wisbech	Goredike Bank	Cross Drove	Lining Refresh	included
Unc	Wisbech	Decoy Road	Highside	Lining Refresh	included

C308	Wimblington	March Road	Mill Hill Roundabout to exit of village	Lining Refresh	included
B1101	March	The Causeway	throughout	Lining Refresh	included
Unc	March	Nene Parade	throughout	Lining Refresh	included
B1093	Manea	Station Road	route length	Lining Refresh	included
B1093	Manea	High Street	Station Road to Westfield Road	Lining Refresh	included
B1098	Chatteris	Sixteen Foot Bank	Boots Bridge to New Road jnt	Lining Refresh	included
Unc	March	New Road	throughout	Lining Refresh	included
C81	Manea	Westfield Road	High Street to Fallow Corner	Lining Refresh	included
B1093	Doddington	Benwick Road	throughout	Lining Refresh	included
B1093	Benwick	Whittlesey Road	Benwick Grange Farm to Marriotts Road	Lining Refresh	included
B1093	Doddington	Benwick Road	High St through to benwick speed signs	Lining Refresh	included
B1101	Elm	High Road	to county boundary	Lining Refresh	included
B1093	Whittlesey	Benwick Road	Turning Tree Drove - Marriotts	Lining Refresh	included
B1101	Elm	Main Road	Jnt Wells End	Sign	included
B1101	Elm	Fridaybridge Road	throughout	Lining Refresh	included

Huntingdonshire Capital Maintenance and Improvement Programme

Carriageway Maintenance

Road Number	Parish/Town	Street	Location	Works	2025/26
C101	Sawtry	Green End Road	From Sawtry Interchange to Gidding Road + various jct	Carriageway Resurfacing	£ 640,000
C90	Yaxley	Dovecote Lane	Jct with Waterslade Road (including junction to Broadway JCT	Carriageway Resurfacing	£ 176,000
C112	Wistow	Mill Road	From 30mph -inc Kingston Way junc, Parsonage St junc, inc Bridge Street junc, up to No through road sign	Carriageway Resurfacing	£ 280,000
B660	Holme	Long Drove		Carriageway Recycling	£ 1,100,000
Unc	Yaxley	Main Street	At Windsor Drive junction	Carriageway Resurfacing	£ 110,000
Unc	Yaxley	Main Street	At Windsor Drive junction	Carriageway Resurfacing	£ 105,000
A141	The Stukeleys	Spittals Way	Between roundabouts	Carriageway Resurfacing	£ 1,260,000
A1198	Godmanchester	Cambridge Road	Roundabout at A1198	Carriageway Resurfacing	£ 410,000
C121	Hemingford Abbots	Rideaway	From A1307 slip off	Carriageway Resurfacing	£ 330,000
B1096	Ramsey Forty Foot	Forty Foot Bank	Nr properties nr Puddock Rd junc	Carriageway Reconstruction	£ 250,000
C102	Buckworth	Barham Road	Failed section only	Carriageway Resurfacing	£ 50,000
A1096	Fenstanton	London Road	Low Road to Marsh Lane	Surface treatment	included
C97	Folksworth	Washingley Lane	Stilton Rd to Northants	Surface treatment	included
C93	Elton	Bullock Road	Warmington Rd to Oundle Road	Surface treatment	included
C89	Yaxley	Church Street	Main Street to Dovecote Lane	Surface treatment	included
Unc	Hemingford Gey	The Rampley's	St Ives Rd to end	Surface treatment	included
C95	Stilton	Church Street	North St to St Mary's Rd	Surface treatment	included
C90	Yaxley	Dovecote lane	Church Rd to Broadway	Surface treatment	included
Unc	Buckden	Springfield Close	Lucks Lane to end	Surface treatment	included
Unc	Buckden	The Osiers	Lucks Lane to end	Surface treatment	included
B660	Great Gidding	Main Street	Winwick Rd to Infield Road	Surface treatment	included
Unc	Yaxley	Laburnum Avenue	Queen St to Crocus Way	Surface treatment	included
A141	Hartford	Huntingdon Northern Bypass	Kingsd Ripton Road to A1123	Surface treatment	included
C91	Yaxley	Main Street	West End to Windsor Rd	Surface treatment	included
Unc	Huntingdon	Maryland Avenue	Coneygear Rd to end	Surface treatment	included
B1050	Earith	Colne Road	Earith to Somersham	Surface treatment	included
B1090	Woodwalton	Walton Hill	Monks Wood Rd to B1043	Surface treatment	included
Unc	Stilton	Elm Close	St Mary's Rd to end	Preparation for surface treatments in following year	Included
Unc	Stilton	Ermine Crescent	Oak Rd to end	Preparation for surface treatments in following year	Included
C112	Sapley	Kings Ripton Road	Sapley Rd to St Peters Rd	Preparation for surface treatments in following year	Included
Unc	Ramsey	Abbots Close	Wood Lane to end	Preparation for surface treatments in following year	Included
Unc	Eynesbury	Bishops Road	Potton Rd to Ridgeway	Preparation for surface treatments in following year	Included

Unc	Huntingdon	Coneygear Road	Sapley Rd to Kings Ripton Rd	Preparation for surface treatments in following year	Included
Unc	Huntingdon	Mayfield Road	Desborough Rd to Butts Grove Road	Preparation for surface treatments in following year	Included
Unc	Farcet	Southoe Road	St Marys Rd to end	Preparation for surface treatments in following year	Included
Unc	Stilton	Turpins Ride	Oak Rd to end	Preparation for surface treatments in following year	Included
Unc	Hartford	Mill Road	Desborough Rd to end	Preparation for surface treatments in following year	Included
Unc	Hartford	Arundel Road	Desborough Rd to end	Preparation for surface treatments in following year	Included
Unc	Hartford	Lark Crescent	Desborough Rd to end	Preparation for surface treatments in following year	Included
Unc	St Ives	California Road	Hill Rise to end	Preparation for surface treatments in following year	Included
Unc	St Ives	Virginia Way	California Rd to end	Preparation for surface treatments in following year	Included
Unc	St Ives	Alabama Way	California Rd to end	Preparation for surface treatments in following year	Included
Unc	St Ives	Michigan Road	California Rd to end	Preparation for surface treatments in following year	Included
Unc	Eynesbury	Ridgeway	Potton Rd to Bishops Rd	Preparation for surface treatments in following year	Included
Unc	Ramsey	Oates Way	Wood Lane to end	Preparation for surface treatments in following year	Included
Unc	Folksworth	Townsend Way	Washingley Rd to end	Preparation for surface treatments in following year	Included
Unc	Folksworth	Blackmans Road	Townsend Way to Hawthorn Road	Preparation for surface treatments in following year	Included
Unc	Folksworth	Hawthorn Road	Washingley Road to Mallow Lane	Preparation for surface treatments in following year	Included
Unc	Folksworth	Chervil Close	Blackmans Road to end	Preparation for surface treatments in following year	Included
Unc	Folksworth	Mallow Lane	Hawthorn Road to end	Preparation for surface treatments in following year	Included
Unc	Folksworth	Castel Way	Elm Road to end	Preparation for surface treatments in following year	Included
Unc	Stilton	Ash Close	Elm Close to end	Preparation for surface treatments in following year	Included
Unc	Stilton	George Street	Mill Rd to end	Preparation for surface treatments in following year	Included
Unc	Stilton	Talbot Close	George St to end	Preparation for surface treatments in following year	Included
Unc	Farcet	St Mary's Street	Peterborough Rd to Cross Street	Preparation for surface treatments in following year	Included
Unc	Warboys	First Avenue	Humberdale Way to end	Preparation for surface treatments in following year	Included
Unc	Warboys	Second Avenue	Humberdale Way to end	Preparation for surface treatments in following year	Included
Unc	Warboys	Third Avenue	Humberdale Way to end	Preparation for surface treatments in following year	Included
Unc	Godmanchester	Fairey Avenue	Tudor Rd to end	Preparation for surface treatments in following year	Included
Unc	Godmanchester	Lions Close	Tudor Rd to end	Preparation for surface treatments in following year	Included
Unc	Godmanchester	Windsor Road	Tudor Rd to Petit Rd	Preparation for surface treatments in following year	Included
Unc	Hilton	Scotts Close	Scotts Crescent to end	Preparation for surface treatments in following year	Included
Unc	Hilton	Scotts Crescent	Potton Rd to High St	Preparation for surface treatments in following year	Included
B1096	Ramsey	Wood Lane	Ramsey Forty Foot to Little Green	Preparation for surface treatments in following year	Included
Unc	Hartford	Eaton Close	Desborough Rd to end	Preparation for surface treatments in following year	Included
Unc	Eynesbury	Caernarvon Road	Barford Road to William Drive	Preparation for surface treatments in following year	Included
Unc	Bluntisham	Presses Close	Colne Rd to end	Preparation for surface treatments in following year	Included
Unc	Colne	The Rhees	East St to end	Preparation for surface treatments in following year	Included
Unc	Earith	St Mary's	Cooks Drove to end	Preparation for surface treatments in following year	Included
Unc	Houghton	Thicket Road	The Green to Meadow Lane	Preparation for surface treatments in following year	Included
C112	Kings Ripton	Sapley Road	B1090 to A141	Preparation for surface treatments in following year	Included
A1123	Needlingworth	Needlingworth Bypass	Morrisons To Bluntisham Rd	Preparation for surface treatments in following year	Included
Unc	Ramsey	Abbots Fields	Abbots Close to end	Preparation for surface treatments in following year	Included
Unc	Eynesbury	Edward Road	Bishops Rd to end	Preparation for surface treatments in following year	Included

Unc	Godmanchester	The Close	Fairey Ave to end	Preparation for surface treatments in following year	Included
Unc	Godmanchester	Stuart Close	Windsor Rd to end	Preparation for surface treatments in following year	Included
Unc	Godmanchester	Ravenshoe	Windsor Rd to end	Preparation for surface treatments in following year	Included
Unc	Godmanchester	Petit Road	Windsor Rd to Kisby Ave	Preparation for surface treatments in following year	Included
					£ 4,711,000

Footway and Cycleway Maintenance

Road Number	Parish/Town	Street	Location	Works	2025/26
C101	Sawtry	Green End Road	Village to roundabout	Footway resurfacing/improve alignment	£ 50,000
Unc	Huntingdon	High Street	Outside Cromwell Museum including Grammer School Wk., High St through to end of York Stone at Market PI end	Footway and kerb improvements - York stone, damage by vehicle overrun	£ 250,000
Unc	Huntingdon	High Street	From end of York paving above through to gates at end of High St, north side. On south side outside Boots Ltd	Relay small element paviers/replace granite kerbs - damage by vehicle overrun	£ 365,000
B1043	St Neots	Berkley Street	Cambridgeshire Hunter Pub to the roundabout at St. Mary's St - place to place	Footway resurfacing - place to place	£ 150,000
Unc	Elsworth	Rogers Close	Full length	Footway resurfacing	£ 138,000
Unc	Knapwell	High Street	Full length of village - both sides	Footway resurfacing	£ 150,000
Unc	St Ives	Crown Place	Full length	Relay/replace slabs	£ 122,000
Unc	Godmanchester	Park Lane	Concrete section outside houses	Footway resurfacing	£ 45,000
Unc	Holme	Holmewood Crescent	Length	Footway Slurry Seal	included
Unc	St Ives	Burleigh Road	Length	Footway Slurry Seal	included
Unc	Bury	Sunfield Road	Length	Footway Slurry Seal	included
Unc	Bury	Brookfield Way	Length	Footway Slurry Seal	included
Unc	Bury	High Meadow	Length	Footway Slurry Seal	included
Unc	Bluntisham	The Sycamores	Length	Footway Slurry Seal	included
Unc	Warboys	Garner Avenue	Length	Footway Slurry Seal	included
Unc	Warboys	First Avenue	Length	Footway Slurry Seal	included
Unc	Warboys	Second Avenue	Length	Footway Slurry Seal	included
Unc	Warboys	Third Avenue	Length	Footway Slurry Seal	included
Unc	Warboys	Spinney Road	Length	Footway Slurry Seal	included
Unc	Warboys	Field Close	Length	Footway Slurry Seal	included
Unc	Somersham	Manor Close	Length	Footway Slurry Seal	included
Unc	Somersham	Squires Close	Length	Footway Slurry Seal	included

Unc	St Ives	Gorse Way	Length	Footway Slurry Seal	included
Unc	St Ives	Lilac Way	Length	Footway Slurry Seal	included
Unc	St Ives	Kings Hedges	Length	Footway Slurry Seal	included
Unc	St Ives	Spinney Way	Length	Footway Slurry Seal	included
Unc	St Ives	Garden Close	Length	Footway Slurry Seal	included
Unc	St Ives	Victor Close	Length	Footway Slurry Seal	included
Unc	St Ives	Lisander Close	Length	Footway Slurry Seal	included
Unc	St Ives	Salisbury Close	Length	Footway Slurry Seal	included
Unc	St Ives	Suffolk Close	Length	Footway Slurry Seal	included
Unc	Eynesbury	Caldecote Road	Length	Footway Slurry Seal	included
Unc	Warboys	School Road	Length	Footway Slurry Seal	included
Unc	St Ives	Erica Road	Length	Footway Slurry Seal	included
Unc	St Ives	Ilex Road	Length	Footway Slurry Seal	included
Unc	St Ives	Wheatfields	Length	Footway Slurry Seal	included
Unc	Bury	Woodfield Road	Length	Footway Slurry Seal	included
Unc	Bury	Pound Road	Length	Footway Slurry Seal	included
Unc	Bury	Buryfield	Length	Footway Slurry Seal	included
Unc	Bury	Ringwood Close	Length	Footway Slurry Seal	included
Unc	Bury	Stonehouse Road	Length	Footway Slurry Seal	included
Unc	Bluntisham	The Fairway	Length	Footway Slurry Seal	included
Unc	Bluntisham	Wheatley Crescent	Length	Footway Slurry Seal	included
Unc	Warboys	Bottles Road	Length	Footway Slurry Seal	included
Unc	Warboys	Knowles Avenue	Length	Footway Slurry Seal	included
Unc	Warboys	Goldpits	Length	Footway Slurry Seal	included
Unc	Warboys	Meadow Way	Length	Footway Slurry Seal	included
Unc	Warboys	Woodlands	Length	Footway Slurry Seal	included
Unc	Somersham	Bishops Road	Length	Footway Slurry Seal	included
Unc	Somersham	Queens Road	Length	Footway Slurry Seal	included
Unc	Eaton Socon	Beatty Road	Length	Footway Slurry Seal	included
Unc	St Ives	The Pound	Length	Footway Slurry Seal	included
Unc	St Ives	Laburnum Way	Length	Footway Slurry Seal	included
Unc	St Ives	Hawthorn Way	Length	Footway Slurry Seal	included
Unc	St Ives	Broom Way	Length	Footway Slurry Seal	included
Unc	St Ives	Forsythe Road	Length	Footway Slurry Seal	included
Unc	St Ives	Gosland Close	Length	Footway Slurry Seal	included
Unc	St Ives	All Saints Green	Length	Footway Slurry Seal	included
Unc	St Ives	Kingsbrooke	Length	Footway Slurry Seal	included
Unc	St Ives	Stirling Road	Length	Footway Slurry Seal	included
Unc	St Ives	Lancaster Drive	Length	Footway Slurry Seal	included
Unc	St Ives	Anson Drive	Length	Footway Slurry Seal	included

Unc	St Ives	Lincoln Avenue	Length	Footway Slurry Seal	included
Unc	St Ives	Comet Way	Length	Footway Slurry Seal	included
Unc	St Ives	Wellington Avenue	Length	Footway Slurry Seal	included
Unc	St Ives	Albermarle Road	Length	Footway Slurry Seal	included
Unc	St Ives	Blenheim Drive	Length	Footway Slurry Seal	included
Unc	St Ives	Valliant Drive	Length	Footway Slurry Seal	included
Unc	St Ives	Canberra Drive	Length	Footway Slurry Seal	included
Unc	St Ives	Rutland Close	Length	Footway Slurry Seal	included
Unc	St Ives	Kent Close	Length	Footway Slurry Seal	included
Unc	St Ives	Grafton Close	Length	Footway Slurry Seal	included
Unc	St Ives	Bedford Crescent	Length	Footway Slurry Seal	included
Unc	St Ives	Windsor Close	Length	Footway Slurry Seal	included
Unc	St Ives	Manchester Way	Length	Footway Slurry Seal	included
Unc	St Ives	Sandwich Close	Length	Footway Slurry Seal	included
Unc	St Ives	Norfolk Road	Length	Footway Slurry Seal	included
Unc	St Ives	Devon Close	Length	Footway Slurry Seal	included
Unc	St Ives	Arran Way	Length	Footway Slurry Seal	included
Unc	St Ives	York Way	Length	Footway Slurry Seal	included
Unc	Eynesbury	Burnt Cl to Humberley Cl Footpath	Length	Footway Slurry Seal	included
Unc	Eynesbury	Burnt Close	Length	Footway Slurry Seal	included
Unc	Eynesbury	Humberley Close	Length	Footway Slurry Seal	included
Unc	St Neots	Childs Pond Road	Length	Footway Slurry Seal	included
Unc	Great Gransden	Fox Street	Length	Footway Slurry Seal	included
Unc	Great Gransden	Church Street	Length	Footway Slurry Seal	included
Unc	St Neots	Bean Close	Length	Footway Slurry Seal	included
Unc	St Neots	Queensway	Length	Footway Slurry Seal	included
Unc	Brampton	Nursery Walk	Length	Footway Slurry Seal	included
Unc	Great Staughton	Manor Close	Length	Footway Slurry Seal	included
Unc	Hail Weston	Spring Place	Length	Footway Slurry Seal	included
Unc	Elton	Highgate Green	Length	Footway Slurry Seal	included
Unc	Sawtry	Moyne Road	Length	Footway Slurry Seal	included
Unc	Great Stukeley	Beech Avenue	Length	Footway Slurry Seal	included
Unc	Offord D'Arcy	Bramley Drive	Length	Footway Slurry Seal	included
Unc	Great Paxton	Towgood Way	Length	Footway Slurry Seal	included
Unc	St Neots	Green End Road	Length	Footway Slurry Seal	included
Unc	Brampton	Crane Street	Length	Footway Slurry Seal	included
Unc	Brampton	Waterloo Close	Length	Footway Slurry Seal	included
Unc	Hail Weston	Manor Way	Length	Footway Slurry Seal	included
Unc	Hail Weston	Weston Close	Length	Footway Slurry Seal	included
Unc	Huntingdon	Essex Road	Length	Preparation for surface treatments in following year	Included
Unc	Farcet	Peterborough Road	Length	Preparation for surface treatments in following year	Included
Unc	Farcet	St Mary's Street	Length	Preparation for surface treatments in following year	Included
Unc	Farcet	Cross Street	Length	Preparation for surface treatments in following year	Included
Unc	Farcet	Main Street	Length	Preparation for surface treatments in following year	Included

Unc	Farcet	Middle Street	Length	Preparation for surface treatments in following year	Included
Unc	Bluntisham	The Poplars	Length	Preparation for surface treatments in following year	Included
Unc	Sawtry	Fen Lane	Length	Preparation for surface treatments in following year	Included
Unc	Woodwalton	Beville	Length	Preparation for surface treatments in following year	Included
Unc	St Neots	Tebbutts Road	Length	Preparation for surface treatments in following year	Included
Unc	St Neots	Cambridge Street	Length	Preparation for surface treatments in following year	Included
Unc	Eynesbury	Berkley Street	Length	Preparation for surface treatments in following year	Included
Unc	Eynesbury	Hardwick Road	Length	Preparation for surface treatments in following year	Included
Unc	Eynesbury	Howitts Lane	Length	Preparation for surface treatments in following year	Included
Unc	Eynesbury	Howitts Gardens	Length	Preparation for surface treatments in following year	Included
Unc	Eynesbury	Potton Road	Length	Preparation for surface treatments in following year	Included
Unc	Eynesbury	Bishops Road	Length	Preparation for surface treatments in following year	Included
Unc	Yelling	High Street	Length	Preparation for surface treatments in following year	Included
Unc	Brington	Church Lane	Length	Preparation for surface treatments in following year	Included
Unc	Great Gransden	Middle Street	Length	Preparation for surface treatments in following year	Included
Unc	Great Gransden	West Street	Length	Preparation for surface treatments in following year	Included
Unc	Great Gransden	Sand Street	Length	Preparation for surface treatments in following year	Included
Unc	Great Gransden	Caxton Road	Length	Preparation for surface treatments in following year	Included
Unc	Offord Cluny	Station Lane	Length	Preparation for surface treatments in following year	Included
Unc	Great Paxton	High Street	Length	Preparation for surface treatments in following year	Included
Unc	Great Paxton	Adams Lane	Length	Preparation for surface treatments in following year	Included
Unc	Abbotsley	High Street	Length	Preparation for surface treatments in following year	Included
Unc	Warboys	Humberdale Way	Length	Preparation for surface treatments in following year	Included
Unc	Warboys	Flaxen Walk	Length	Preparation for surface treatments in following year	Included
Unc	Warboys	Statfold Green	Length	Preparation for surface treatments in following year	Included
Unc	Warboys	Old Mill Avenue	Length	Preparation for surface treatments in following year	Included
Unc	Warboys	Pathfinder Way	Length	Preparation for surface treatments in following year	Included
Unc	Warboys	Wellington Close	Length	Preparation for surface treatments in following year	Included
Unc	Warboys	Stirling Close	Length	Preparation for surface treatments in following year	Included
Unc	Warboys	Lea Brooks Close	Length	Preparation for surface treatments in following year	Included
Unc	Hartford	Rodney Road	Length	Preparation for surface treatments in following year	Included
Unc	Hartford	Nelson Road	Length	Preparation for surface treatments in following year	Included
Unc	Hartford	Dene Close	Length	Preparation for surface treatments in following year	Included
Unc	Hartford	Drake Close	Length	Preparation for surface treatments in following year	Included
Unc	Hartford	Goldfinch Close	Length	Preparation for surface treatments in following year	Included

£ 1,270,000

Active Travel maintenance

Road Number	Parish/Town	Street	Location	Works	2025/26
C185	Fen Drayton	Cootes Lane	From Mill Road to High Street	Footway resurfacing	£ 280,000

£ 280,000

Highway Drainage and resilience

Road Number	Parish/Town	Street	Location	Works	2025/26
B1514	Brampton	Buckden Road	At Allens Orchard	Drainage investigation and design only	£ 90,000
B1043	Great Paxton	High Street	At River Lane	Drainage design and construction	£ 140,000
C336	Chesterton	Oundle Road	inc Priory Gdns	Drainage design and construction	£ 140,000
B1091	Yaxley	Broadway	At Shackleton Way	Drainage design and construction	£ 170,000
C95	Stilton	North Street and High St	At the Jetty	Drainage design and construction	£ 220,000
Unc	Somersham	Parkhall Road	From village to school	Drainage design and construction	£ 210,000
Various	Hemingford Abbots	Various	Village Wide	Drainage investigation and design only	£ 350,000
Unc	Fenstanton	Manor Drive/Hall Green Lane	At Chequer Street	Drainage design and construction	£ 170,000
C177	Great Gransden	East St/Middle St	Middle St to Brook	Drainage construction	£ 320,000
Unc	Needingworth	Hawkes Lane	Throughout road	Drainage design and construction	£ 150,000
Unc	Huntingdon	St Johns Street	Nr factory unit	Drainage investigation and design only	£ 35,000
Unc	Fenstanton	Greenfields	All road	Drainage design and construction	£ 150,000

£ 2,145,000**Locally determined minor capital schemes**

Road Number	Parish/Town	Street	Location	Works	2025/26
Various locations to be determined within year					£ 103,120

£ 103,120**Bridge Strengthening**

Road Number	Parish/Town	Street	Location	Works	2025/26
U/C	St Ives	London Road	Hemingford Rd	Design 25/26 for brick arch repairs in 26/27	£ 50,000
F	St Neots	Brook Street	Marina Footbridge	Timber deck material and parapet redesign	£ 25,000

£ 75,000**Vehicle Restraint Systems (safety barriers)**

Road Number	Parish/Town	Street	Location	Works	2025/26
A141	Brampton	A141	On slip from B1514 Westbound	Design and Construction - Replace VRS	£ 100,000

£ 100,000**Traffic Signal Replacement**

Road Number	Parish/Town	Street	Location	Works	2025/26
A15	Yaxley	London Road	London Road / Brunel Drive	Refurbish junction	£ 110,000
Unc	St Ives	Ramsey Road	Ramsey Road Near Elm Drive	Refurbish crossing	£ 52,000
Unc	Papworth Everard	Ermine Street	Ermine Street / Church Lane / North Lodge Drive	Refurbish junction	£ 208,567
B1041	St Neots	Mill Lane	Mill Lane / New Street / The Common	Refurbish junction	£ 192,962
Unc	St Ives	Ramsey Road	Ramsey Road Near Edinburgh Drive / Albemarle Road	Refurbish crossing	£ 52,000

Rights of Way

Maintaining the Rights of Way network

Road Number	Parish/Town	ROW	Location	Works	2025/26
Various	Huntingdonshire	Various	Huntingdonshire	Vegetation works for specific RoWs neglected over past 3 years. (Continuation of 2024 Procurement programme.	£ 49,100
Various	Ouse Valley Way - Hunts	Various	Earith - Little Paxton (Hunts OVW)	OVW repairs in preparation for summer events such as OVW Marathon. (Veg, gates, footbridges, surfaces)	£ 27,250
Various	Huntingdonshire	Byway	Countywide	Groundwork to knock out ruts, some sections of hardened ground using road planings	£ 21,800
Various	Huntingdonshire	Various	Countywide	Scrub Clearance and Maintenance	£ 21,800
Various	Huntingdonshire	Various	Countywide	Improving access to the ROW Network	£ 10,900

£ 130,850

Signs and Lines

Road Number	Parish/Town	Street	Location	Works	2025/26
C101	Sawtry	Green End Road	outside fire station	Lining Refresh	Included
A1096	Fenstanton	London Road	Jnt A1307	Lining Refresh	Included
Unc	Huntingdon	Great Northern Street	DYL	Lining Refresh	Included
B1043	Alconbury	Ermine Street	at RAF base	Signs and Lines	Included
B1043	Alconbury	Ermine Street	S/bound to A141	Signs and Lines	Included
B1043	Offord Cluny	High Street	bus stop	Signs	Included
B660	Old Weston	Main Street		Signs and Lines	Included
B660	Kimbolton	Station Road	Jnts with Stow Road & Newtown	Lining Refresh	Included
B660	Catworth	Station Road	Jnt with Tilbrook Grange Road	Lining Refresh	Included
Unc	Kimbolton	Newtown	throughout plus o/s school	Lining Refresh	Included

C167	Brampton	High Street	throughout	Lining Refresh	Included
Unc	St Neots	The Crescent	junctions	Lining Refresh	Included
Unc	Spaldwick	Ferriman Road	outside school	Lining Refresh	Included
Unc	Huntingdon	Parkway	DYL	Lining Refresh	Included
C108	Alconbury	Mill Road		Signs and Lines	Included
Unc	Sawtry	Beaumaris Road	Jnt Green End Road	Lining Refresh	Included
Unc	St Neots	Longsands Road	o/s school	Lining Refresh	Included
B1043	Alconbury	Ermine Street	HCV entrance	Lining Refresh	Included
B1514	Huntingdon	Brookside	throughout	Lining Refresh	Included
Unc	Sawtry	Fairfield Close	Jnt with Deerpark Road	Lining Refresh	Included
Unc	Alconbury	School Road	outside school	Lining Refresh	Included
C121	Hemingford Grey	Pound Road	Jnt with High Street	Lining Refresh	Included
Unc	Buckworth	Hamerton Road		Signs and Lines	Included
Unc	Catworth	Thrapston Road	Jnt Brington Road	Lining Refresh	Included
Unc	Huntingdon	Mayfield Road	DYL	Lining Refresh	Included
B1091	Farcet	Broadway	o/s 13 disabled bay	Lining Refresh	Included
A1123	St Ives	Houghton Road	throughout	Lining Refresh	Included
A1123	Houghton	Houghton Hill	Sawtry way to A141	Lining Refresh	Included
B1043	Godmanchester	West Street	throughout	Lining Refresh	Included
B1040	Bury	High Street	speed limit to end	Lining Refresh	Included
B1040	Ramsey St Mary's	Herne Road	throughout	Lining Refresh	Included
Unc	St Ives	Meadow Way	roundabout at Harrison Road	Lining Refresh	Included
C173	Buckden	Church Street	B1046 to Great Gransden Hall	Lining Refresh	Included
B1046	Great Gransden	Meadow Road	throughout	Lining Refresh	Included
B1091	Farcet	Peterborough Road	throughout	Lining Refresh	Included
Unc	St Neots	Brampton Gardens	disabled bay	Lining Refresh	Included
A1123	Houghton	Houghton Hill	throughout	Lining Refresh	Included
C91	Yaxley	The Green	Throughout	Lining Refresh	Included
B1046	Abbotsley	Gransden Road	throughout	Lining Refresh	Included
B1046	Abbotsley	Potton Road	throughout	Lining Refresh	Included
C171	St Neots	Mill Lane	throughout	Lining Refresh	Included
B660	Catworth	Fox Road	Centre lines removed	Lining Refresh	Included
C101	Sawtry	Green End Road	bus stop	Lining Refresh	Included
C112	Sapley	Kings Ripton Road	Centre lines	Lining Refresh	Included
Unc	Huntingdon	Cowper Road	o/s 23 disabled bay	Lining Refresh	Included
C101	Sawtry	Green End Road	parking bay	Lining Refresh	Included
C112	Sapley	Kings Ripton Road	A141 to B1090	Lining Refresh	Included
Unc	Buckden	Station Road	throughout	Lining Refresh	Included
C111	Upwood	Ramsey Road	Upwood to Bury	Lining Refresh	Included
Unc	Little Paxton	Great North Road	throughout	Lining Refresh	Included
Unc	Farcet	St Mary's Street	throughout	Lining Refresh	Included
C111	Little Raveley	Broughton Road	throughout	Lining Refresh	Included

C111	Upwood	Huntingdon Road	throughout	Lining Refresh	Included
C88	Farcet	Main Street	route length	Lining Refresh	Included
C121	Hemingford Abbots	Rideaway		Lining Refresh	Included
Unc	Perry	Chichester Way	Glebe Road/Ridgeway	Lining Refresh	Included
Unc	Perry	Chichester Way	o/s post office	Lining Refresh	Included
C105	Alconbury Weston	Hamerton Road	opposite Pub	Lining Refresh	Included
C96	Folksworth	Washingley Road	throughout	Lining Refresh	Included
B671	Sibson	London Road	throughout	Lining Refresh	Included
C181	Hilton	Graveley Way	throughout	Lining Refresh	Included
C166	Grafham	Buckden Road	Grafham to Ellington	Lining Refresh	Included
Unc	Alwalton	Oundle Road	throughout	Lining Refresh	Included
B1096	Ramsey	Wood Lane	Wells Bridge to Ramsey	Lining Refresh	Included
C88	Farcet	Wrights Drove	throughout	Lining Refresh	Included
Unc	Yaxley	Daimler Avenue	throughout	Lining Refresh	Included
Unc	Yaxley	Ferndale	throughout	Lining Refresh	Included
Unc	Eynesbury	Springbrook	o/s No 1	Lining Refresh	Included
Unc	Farcet	Haddon Way	Broadway to Andrews Close	Lining Refresh	Included
Unc	Ramsey	New Road	o/s 40 remove disabled bay	Lining Refresh	Included
C102	Spaldwick	Barham Road	Barham to Spaldwick	Lining Refresh	Included
C100	Leighton Bromswold	Staunch Hill	throughout	Lining Refresh	Included
Unc	Kimbolton	Tilbrook Road	Kimbolton to county boundary	Lining Refresh	Included
Unc	Abbots Ripton	Wennington Road	throughout	Lining Refresh	Included

South Cambridgeshire Capital Maintenance and Improvement Programme

Carriageway Maintenance

Road Number	Parish/Town	Street	Location	Works	2025/26
C182	Croxton	Toseland Road	From existing A428 to tie into new A428 works	Resurface carriageway - coordination with National Highway works	£ 200,000
B1049	Cottenham	High Street	From Margett St to Denmark Rd & roundabout at Histon Rd	Carriageway Resurfacing	£ 470,000
B1050	Willingham	Earith Road	From George St to Roseberry site	Carriageway Resurfacing	£ 630,000
A1301	Great Shelford	Tunwells Lane	From Grahams Road to and inc. traffic signals junc	Carriageway Resurfacing	£ 460,000
A505	Pampisford	Causeway	Roundabout at A1301	Carriageway Resurfacing	£ 400,000
C246	Shudy Camps	Main Street	From Junction with Bartlow Road to The Thatch	Carriageway Resurfacing	£ 290,000
B1368	Harston	London Road	From junction with High Street to number 70	Carriageway Resurfacing	£ 315,000
Unc	Cambourne	Cambourne Road	Southern roundabout at A428 junction	Carriageway Resurfacing	£ 160,000
C210	Waterbeach	Clayhithe Road	From junction with Lode Avenue to junction with Waterbeach Station Car Park	Carriageway Resurfacing	£ 65,000
C180	Graveley	High Street	From number 70 to Ponds Farm Cottage	Carriageway Resurfacing	£ 110,000
C197	Oakington	Dry Drayton Road	Cambridge Rd to raised table	Surface treatment	Included
C271	Steeple Morden	Cheyney Street	Hay Street to Litlington Road	Surface treatment	Included
A1303	Teversham	Newmarket Road	Airport Way to Park & Ride	Surface treatment	Included
C267	Little Chishill	Little Chishill Road	May Street to Essex CC	Surface treatment	Included
Unc	Weston Green	Horseshoes Lane	Common Rd to end	Surface treatment	Included
Unc	Teversham	Fulbourn Old Drift	Yarrow Rd to End	Surface treatment	Included
Unc	Waterbeach	Spurgeons Avenue	Way Lane to end	Surface treatment	Included
B1052	West Wratting	Bull Lane	Six Mile Bottom Rd to High St	Surface treatment	Included
C267	Great Chishill	May Street	Hall Lane to Hert CC	Surface treatment	Included
C231	Carlton	Brinkley Road	Common Road to Acre Road	Surface treatment	Included
Unc	Waterbeach	Payton Way	Rosemary Rd to end	Surface treatment	Included
C191	Over	Gravel Bridge Road	Ramper Road to speed limit	Surface treatment	Included
Unc	Waterbeach	Bannold Rd	High St to Bannold Drove	Surface treatment	Included
C191	Over	Glover Street	West St to High St	Surface treatment	Included
Unc	Fulbourn	All Saints Road	Haggis Gap to end	Surface treatment	Included
Unc	Horseheath	Horseheath Green	A1307 to Nosterfield End	Surface treatment	Included
C264	Thriplow	Gravel Pit Hill	Middle Street to A505	Surface treatment	Included
Unc	Litlington	Royston Road	Silver Street to A605	Surface treatment	Included
C234	Fulbourn	Teversham Road	Level Crossing to Teversham	Surface treatment	Included
Unc	Waterbeach	Providence Way	Denny End Rd to end	Surface treatment	Included

Unc	Barton	Kings Grove	New Road to end	Surface treatment	Included
Unc	Fulbourn	St Vigors Road	Haggis Gap to School Lane	Surface treatment	Included
Unc	Histon	Melvin Way	Park Lane to end	Surface treatment	Included
B1052	Weston Colville	Church End	Mill Rd to Six Mile Bottom Rd	Preparation for surface treatments in following year	Included
B1046	Toft	Comberton Road	West St to High St	Preparation for surface treatments in following year	Included
B1046	Toft	High Street	Comberton Rd to speed limit	Preparation for surface treatments in following year	Included
Unc	Haslingfield	Scotts Yard	Fountains Lane to end	Preparation for surface treatments in following year	Included
Unc	Waterbeach	Coronation Close	Cambridge Rd to end	Preparation for surface treatments in following year	Included
C235	Fulbourn	Cambridge Road	Yarrow Rd to Fulbourn 30	Preparation for surface treatments in following year	Included
Unc	Meldreth	Kneesworth Road	Whaddon Rd to A1198	Preparation for surface treatments in following year	Included
Unc	Melbourn	Clear Crescent	New Rd to Fordham Way	Preparation for surface treatments in following year	Included
Unc	Sawston	St Mary's Road	Church Lane to Huddleston Way	Preparation for surface treatments in following year	Included
Unc	Sawston	Hall Crescent	Huddleston Way to end	Preparation for surface treatments in following year	Included
Unc	Sawston	Huddleston Way	Church Lane to end	Preparation for surface treatments in following year	Included
Unc	Milton	The Oaks	The Rowans to end	Preparation for surface treatments in following year	Included
Unc	Milton	James Carlton Close	The Rowans to end	Preparation for surface treatments in following year	Included
Unc	Great Shelford	Granhams Road	A1301 to speed limit	Preparation for surface treatments in following year	Included
Unc	Milton	The Rowans	High St to High St	Preparation for surface treatments in following year	Included
C184	Boxworth	Elsworth Road	High St 30 to Elsworth 30	Preparation for surface treatments in following year	Included
C269	Meldreth	Station Road	Whitcroft Rd to Station Rd, Melbourn	Preparation for surface treatments in following year	Included
B1368	Fowlmere	London Road	A505 to 30mph	Preparation for surface treatments in following year	Included
Unc	Haslingfield	Fountains Lane	High St to New Rd	Preparation for surface treatments in following year	Included

£ 3,100,000

Footway and Cycleway Maintenance

Road Number	Parish/Town	Street	Location	Works	2025/26
Unc	Orchard Park	Circus Drive, Graham Rd, Topper St	Various locations	Removal/adaption of tree pits, reinstate footways	£ 240,000
Unc	Sawston	Babraham Road	From Cambridge Rd to Ashley Way - north side, place to place	Footway resurfacing - place to place north side	£ 165,000
Unc	Foxton	Hillfield	Full length	Footway resurfacing	£ 160,000
C232	Fulbourne	Station Road	From bend to level crossing	Footway resurfacing	£ 200,000
Unc	Bar Hill	Spine link path	Through link path	Footway resurfacing	£ 170,000
Unc	Brington	High Street	From school towards The Gables	Footway resurfacing	£ 40,000
Unc	Weston Colville	Horseshoe Lane	Full road	Footway resurfacing	£ 62,000
Unc	Duxford	Highfield Close	Length	Footway Slurry Seal	included
Unc	Duxford	Markby Cloe	Length	Footway Slurry Seal	included
Unc	Bassingbourn	North End	Length	Footway Slurry Seal	included
Unc	Fulbourn	Pettits Close	Length	Footway Slurry Seal	included
Unc	Linton	Balsham Road	Length	Footway Slurry Seal	included
Unc	Duxford	Bustlers Rise	Length	Footway Slurry Seal	included
Unc	Duxford	Carter Close	Length	Footway Slurry Seal	included

Unc	Little Shelford	Church Street	Length	Footway Slurry Seal	included
Unc	Fulbourn	Doggett Lane	Length	Footway Slurry Seal	included
Unc	Girton	High Street	Length	Footway Slurry Seal	included
Unc	Duxford	Kintbury	Length	Footway Slurry Seal	included
Unc	Melbourn	Orchard Road	Length	Footway Slurry Seal	included
Unc	Duxford	Petersfield Road	Length	Footway Slurry Seal	included
Unc	Duxford	Rectory Road	Length	Footway Slurry Seal	included
Unc	Duxford	St Peters Road	Length	Footway Slurry Seal	included
Unc	Haslingfield	Cantelupe Road	Length	Footway Slurry Seal	included
Unc	Trumpington	Gayton Close	Length	Footway Slurry Seal	included
Unc	Melbourn	John Impey Way	Length	Footway Slurry Seal	included
Unc	Trumpington	Lambourne Close	Length	Footway Slurry Seal	included
Unc	Duxford	Liberty Lane	Length	Footway Slurry Seal	included
Unc	Linton	Symonds Lane	Length	Footway Slurry Seal	included
Unc	Linton	Wheatsheaf Way	Length	Footway Slurry Seal	included
Unc	Fulbourn	Apthorpe Street	Length	Footway Slurry Seal	included
Unc	Linton	Chalklands	Length	Footway Slurry Seal	included
Unc	Arrington	Clifden Close	Length	Footway Slurry Seal	included
Unc	Fulbourn	Geoffrey Bishop Ave	Length	Footway Slurry Seal	included
Unc	Melbourn	Greengage Rise	Length	Footway Slurry Seal	included
Unc	Fulbourn	St Vigors Road	Length	Footway Slurry Seal	included
Unc	Stapleford	Sternes Way	Length	Footway Slurry Seal	included
Unc	Melbourn	Trigg Way	Length	Footway Slurry Seal	included
Unc	Fulbourn	Wrights Grove	Length	Footway Slurry Seal	included
Unc	Steeple Morden	Station Road	Length	Preparation for surface treatments in following year	Included
Unc	Cherry Hinton	High Street	Length	Preparation for surface treatments in following year	Included
Unc	Whittlesford	Duxford Road	Length	Preparation for surface treatments in following year	Included
Unc	Bar Hill	Spinal Footpath	Length	Preparation for surface treatments in following year	Included
Unc	Histon	High Street	Length	Preparation for surface treatments in following year	Included
Unc	Little Abington	High Street	Length	Preparation for surface treatments in following year	Included
Unc	Little Abington	Meadow Walk	Length	Preparation for surface treatments in following year	Included
Unc	Linton	Horseheath Road	Length	Preparation for surface treatments in following year	Included
Unc	Teversham	Ferndale	Length	Preparation for surface treatments in following year	Included
Unc	Teversham	High Street	Length	Preparation for surface treatments in following year	Included
Unc	Teversham	Church Road	Length	Preparation for surface treatments in following year	Included
Unc	Teversham	Lady Jermy Way	Length	Preparation for surface treatments in following year	Included
Unc	Castle Camps	High Street	Length	Preparation for surface treatments in following year	Included
Unc	Castle Camps	Haverhill Road	Length	Preparation for surface treatments in following year	Included
Unc	Little Wilbraham	Frog End	Length	Preparation for surface treatments in following year	Included
Unc	Little Wilbraham	High Street	Length	Preparation for surface treatments in following year	Included
Unc	Little Wilbraham	Church Road	Length	Preparation for surface treatments in following year	Included
Unc	Little Wilbraham	Rectory Farm Road	Length	Preparation for surface treatments in following year	Included

Unc	Great Wilbraham	Angle End	Length	Preparation for surface treatments in following year	Included
Unc	Great Wilbraham	Church Street	Length	Preparation for surface treatments in following year	Included
Unc	Great Wilbraham	Church Close	Length	Preparation for surface treatments in following year	Included
Unc	Great Wilbraham	High Street	Length	Preparation for surface treatments in following year	Included
Unc	Great Wilbraham	The Squires Field	Length	Preparation for surface treatments in following year	Included
Unc	Great Wilbraham	Station Road	Length	Preparation for surface treatments in following year	Included
Unc	Papworth Everard	Barons Way	Length	Preparation for surface treatments in following year	Included
Unc	Fulbourn	Bird Farm Road	Length	Preparation for surface treatments in following year	Included
Unc	Fulbourn	Caraway Road	Length	Preparation for surface treatments in following year	Included
Unc	Fulbourn	Teversham Road	Length	Preparation for surface treatments in following year	Included
Unc	Fulbourn	Hinton Road	Length	Preparation for surface treatments in following year	Included
Unc	Fulbourn	The Haven	Length	Preparation for surface treatments in following year	Included
Unc	Fulbourn	Cambridge Road	Length	Preparation for surface treatments in following year	Included
Unc	Fulbourn	High Street	Length	Preparation for surface treatments in following year	Included
Unc	Fulbourn	The Maples	Length	Preparation for surface treatments in following year	Included
Unc	Fulbourn	Manor Walk	Length	Preparation for surface treatments in following year	Included
Unc	Fulbourn	Home End	Length	Preparation for surface treatments in following year	Included
Unc	Fulbourn	Station Road	Length	Preparation for surface treatments in following year	Included
Unc	Fulbourn	School Lane	Length	Preparation for surface treatments in following year	Included
Unc	Fulbourn	Greater Foxes	Length	Preparation for surface treatments in following year	Included
Unc	Fulbourn	All Saints Road	Length	Preparation for surface treatments in following year	Included
Unc	Fulbourn	Stansfield Gardens	Length	Preparation for surface treatments in following year	Included
Unc	Cottenham	Franklin Gardens	Length	Preparation for surface treatments in following year	Included
Unc	Willingham	Newington	Length	Preparation for surface treatments in following year	Included
Unc	Willingham	Church Street	Length	Preparation for surface treatments in following year	Included

£ 1,037,000

Active Travel maintenance

Road Number	Parish/Town	Street	Location	Works	2025/26
B1102	Stow cum Quy	Church Road	From traffic signals at NCN51 to/including Orchard St	Footway resurfacing	£ 250,000

£ 250,000

Highway Drainage and resilience

Road Number	Parish/Town	Street	Location	Works	2025/26
C242	Linton	High Street	Near PH & #54	Drainage construction	£ 130,000
C232	Fulbourne	Station Road	Various locations through road	Drainage design and construction	£ 180,000
C232	Great Wilbraham	Church Street		Drainage design and construction	£ 180,000
Unc	Little Wilbraham	High Street		Drainage design and construction	£ 180,000
Unc	Linton	Lambs Fair Court	Granta Vale to High St	Drainage construction	£ 150,000
C210	Waterbeach	Chapel Street	From Londis	Drainage design and construction	£ 100,000

£ 920,000

Locally determined minor capital schemes

Road Number	Parish/Town	Street	Location	Works	2025/26
Various locations to be determined within year					£ 103,120
					£ 103,120
Bridge Strengthening					
Road Number	Parish/Town	Street	Location	Works	2025/26
C198	Girton	Oakington Road	North of Girton wingwall	Design	£ -
Unc	Shingay cum Wendy	Flecks Lane	Wendy Bridge	Bridge strengthening design	£ -
					£ -
Vehicle Restraint Systems (safety barriers)					
Road Number	Parish/Town	ROW	Works		2025/26
A603	Grantchester	Barton Road	Roundabout to Roundabout at Junction 12 M11	Design in 25/26 for 26/27 construction - replacement	£ -
A1301	Hinxton	Cambridge Road	Under M11	Design and construction - Upgrade VRS	£ 70,000
					£ 70,000
Traffic Signal Replacement					
Road Number	Parish/Town	Street	Location	Works	2025/26
C198	Girton	Cambridge Road	Cambridge Road Near Orchard Close	Refurbish crossing	£ 34,721
					£ 34,721
Rights of Way					
Maintaining the Rights of Way network					
Road Number	Parish/Town	ROW	Works		2025/26
FP1	Knapwell	Footpath	Localised heavy flooding at approximately ///relay.digested.hamster	Solution to the flooding issue that is a large limit to access	£ 21,850
BY3	Milton	Byway	At entrance near B lackwell Travellers Camp/A14	Solutions to stop fly tipping	£ 7,646
BR10	Cambourne	Bridleway		Scrub clearance after complaints from BHS	£ 10,900
BY21	Over	Byway		Fill compressions and ruts (drainage work may be required) alongside southernmost section. Vegetation clearance required and tree works	£ 17,450
BR4	Caldectote	Bridleway		Hardwick Woods - vegetation clearance by woods, also consider drainage works if necessary	£ 13,100
BY5	Fen Drayton	Byway	Hollywell Ferry Road	Solve the pothole issue	£ 21,850
FP1	Balsham	Footpath		<ul style="list-style-type: none"> Remove exposed tree routes and repair surface damage with virgin chalk (Fleam Dyke) remove tree root trip hazards and preventing surface vegetation cutting. Repair surface with imported virgin chalk. 	£ 16,300

FP15	Fulbourn	Footpath		Scrub clearance along sides, increase width to 2m	£ 38,200
FP11	Over	Footpath		Solving the eroding bank issue	£ 14,740
					£ 162,036

Signs and Lines

Road Number	Parish/Town	Street	Location	Works	2025/26
B1049	Impington	Glebe Way	Water Lane 4 way jnt	Lining Refresh	Included
C186	Over	Church End	Keep clear markings	Lining Refresh	Included
C269	Melbourn	Station Road	o/s 25 DYL	Lining Refresh	Included
A1307	Great Shelford	Babraham Road	Dual carriageway to byway 4	Lining Refresh	Included
C233	Teversham	Airport Way	crossing/outside school	Lining Refresh	Included
B1050	Willingham	Station Road	Over Road 4 way jnt	Lining Refresh	Included
A1307	Babraham	Cambridge Road	Magog House to A11 flyover	Lining Refresh	Included
B1061	Burrough Green	Bradley Road	Common Road junction	Lining Refresh	Included
A10	Hauxton	Cambridge Road	Harston to M11 flyover	Lining Refresh	Included

A10	Harston	High Street	Station Road to B1368	Lining Refresh	Included
A10	Harston	Cambridge Road	London Road to end	Lining Refresh	Included
C280	Cambridge	Parker Street	Parkside/Clarendon/Park Terrace jnts	Lining Refresh	Included
C269	Meldreth	High Street	outside school	Lining Refresh	Included
B1046	Toft	West Street	Comberton Village College	Lining Refresh	Included
Unc	Melbourn	High Street	Jnt Brooksbank	Lining Refresh	Included
B1042	Croydon	Lower Road	Clopton Courtyard	Sign	Included
A505	Duxford	Royston Road	Gravel Pit Hill to Thriplow junction	Lining Refresh	Included
A505	Fowlmere	Newmarket Road	Flint Cross to Flinthill Road	Lining Refresh	Included
A505	Melbourn	Newmarket Road	A505 county boundary to Flint Cross	Lining Refresh	Included
A505	Thriplow	Newmarket Road	Chrishill road to Gravel Pit jnt	Lining Refresh	Included
C235	Fulbourn	Cambridge Road	Carroway Road	Lining Refresh	Included
C233	Teversham	Airport Way	Cherry Hinton Road	Lining Refresh	Included
B1046	Longstowe	School Lane	Old North Road	Lining Refresh	Included
A1303	Stow-cum-Quay	Newmarket Road	At the roundabout	Lining Refresh	Included
Unc	Melbourn	Little Lane	jnt with Orchard Road	Lining Refresh	Included
C280	Cambridge	Emmanuel Street	Cycle Lane markings	Lining Refresh	Included
C264	Thriplow	Gravel Pit Hill	Jnt A505	Lining Refresh	Included
A10	Shepreth	Melbourn Bypass	Shepreth Frog end	Lining Refresh	Included
A10	Meldreth	Melbourn Bypass	Royston Road	Lining Refresh	Included
A10	Melbourn	Melbourn Bypass	A505 roundabout	Lining Refresh	Included
A10	Shepreth	Royston Road	Shepreth/Fowlmere crossroad	Lining Refresh	Included
A10	Harston	Royston Road	Hoffer Bridge to Church Street	Lining Refresh	Included
A1307	Horseheath	A1307 - Linton to Horseheath	Mill Road to London Road	Lining Refresh	Included
A1307	Linton	Linton Bypass	The Grip Linton jnt to Mill Road	Lining Refresh	Included
A1307	Little Abington	Cambridge Road	A11 flyover to River Granta Bridge	Lining Refresh	Included
A1307	Linton	Cambridge Road	Dale Heads food to the Grip	Lining Refresh	Included
Unc	Little Abington	High Street	Church Lane/Cambridge Road jnts	Lining Refresh	Included
B1052	West Wratting	Honey Hill	Six Mile Bottom	Lining Refresh	Included
C239	West Wratting	High Street	Mill Street	Lining Refresh	Included
C239	West Wratting	High Street	The Causeway	Lining Refresh	Included
Unc	Comberton	Green End	West Street	Lining Refresh	Included
C244	Bartlow	Camps Road	Dean Road/Ashton Road jnt	Lining Refresh	Included
B1368	Foxton	Cambridge Road	Station Road to Hoffer Bridge	Lining Refresh	Included
A1307	Great Abington	Cambridge Road	River Granta bridge to Abington jnt	Lining Refresh	Included
A1307	Hildersham	Cambridge Road	Abington jnt to layby	Lining Refresh	Included
A1307	Horseheath	Horseheath Bypass	London Road to Haverhill Road	Lining Refresh	Included
C179	Little Gransden	Fullers Hill	Longstowe Road	Lining Refresh	Included
Unc	Shingay-cum-Wend	Mill Lane	High Street	Lining Refresh	Included
C179	Gamlingay	Long Lane	Long lane	Lining Refresh	Included
C203	Kingston	Church Lane	Toft Road	Lining Refresh	Included

Unc	Bassingbourn	South End	Brook Road	Lining Refresh	Included
Unc	Bassingbourn	North End	Brook Road	Lining Refresh	Included
C271	Litlington	Silver Street	Church Street	Lining Refresh	Included
Unc	Comberton	South Street	West Street	Lining Refresh	Included
Unc	Linton	High Street	Outside Co-op (parking bay)	Lining Refresh	Included
C235	Cambridge	Cherry Hinton Road	Clifton Road to Rock Road	Lining Refresh	Included
Unc	Meldreth	Whitecroft Road	Station Road	Lining Refresh	Included
Unc	Meldreth	Whitecroft Road	Fenny Lane	Lining Refresh	Included
Unc	Little Wilbraham	Rectory Farm Road	Rectory Farm Road	Lining Refresh	Included
Unc	Little Wilbraham	High Street	Church Road	Lining Refresh	Included
Unc	Little Gransden	Church Street	Main Road	Lining Refresh	Included
Unc	Little Gransden	Primrose Hill	Main Road	Lining Refresh	Included
C178	Bourn	Fox Street	Old North Road	Lining Refresh	Included
Unc	Croydon	Shingay Road	Lower Road	Lining Refresh	Included
Unc	Gamlingay	Church Lane	Stocks Lane	Lining Refresh	Included
Unc	Gamlingay	The Cinques	Drove Road	Lining Refresh	Included
Unc	Eltisley	Caxton End	Potton Road	Lining Refresh	Included
Unc	Eltisley	The Green	Potton Road	Lining Refresh	Included
Unc	Kingston	Bourn Road	Toft Road	Lining Refresh	Included
Unc	Litlington	Royston Road	railway line	Lining Refresh	Included
Unc	Litlington	South Street	Royston Road/Church Street	Lining Refresh	Included
Unc	Cottenham	Broad Lane	High Street roundabout	Lining Refresh	Included
Unc	Eltisley	Cambridge Road	throughout	Lining Refresh	Included
Unc	Horseheath	Haverhill Road	To county boundary	Lining Refresh	Included
C233	Teversham	Airport Way		Lining Refresh	Included
Unc	Cambridge	Wadloes Road	bus stop markings	Lining Refresh	Included
C259	Haslingfield	Church Street	throughout village	Lining Refresh	Included
A10	Shepreth	A10	Dunbridge/Turnpike	Lining Refresh	Included
Unc	Melbourn	Clear Crescent	Outside Number 11 disabled bay	Lining Refresh	Included

Countywide Capital Maintenance and Improvement Programme

Capital maintenance and improvement programme allocations

Works	2025/26
Improvements to bus shelter provision	£ 200,000
Local Highway Improvements (LHIs)	£ 850,000
Road Safety	£ 250,000
Street Lighting	£ 200,000
	£ 1,500,000

Countywide programmes of work

Works	2025/26
Capitalised road patching	£ 2,405,000
Surface Treatment programme - current schemes listed under District/City areas. Schemes for future years to be confirmed	£ 6,002,000
Preparation for surface treatment schemes, for future years programme	£ 1,173,000
Sign and Lines replacement	£ 500,000
Active Travel reactive maintenance interventions	£ 275,000
Flood study at known key fluvial flooding locations	£ 250,000
VRS (Safety fence renewals) - Future years design, inspection and maintenance	£ 230,000
Footway slurry seal programme - current schemes listed under District/City areas. Schemes for future years to be confirmed	£ 2,900,000
Investigation and design for future year schemes	£ 300,000
Highway condition data surveys	£ 400,000
	£ 14,435,000

A1307/A141 De trunked road maintenance

Works	2025/26
Street lighting - Contract management, annual maintenance essential repairs	£ 200,000
Highway Drainage - locations identified as requiring significant intervention	£ 600,000
Traffic Signals - maintain existing infrastructure	£ 10,000
VRS repairs/replacement	£ 400,000
Review future use of dual carriageway and redesign of Spittals roundabout	£ 100,000
Carriageway resurfacing included in Huntingdonshire programme	-
Balance of funding unallocated in Business Plan	£ 3,178,000
	£ 4,488,000

Rights of Way

Maintaining the Rights of Way network

Works	2025/26
Fund to repair, replace and upgrade bridges as a result of inspections	£ 75,094
	£ 75,094

Bridge Strengthening

Works	2025/26
Design for future years schemes & capitalised minor improvements	£ 767,700
	£ 767,700

Traffic Signal Replacement

Works	2025/26
Design for future years schemes	£ 100,000
Obsolescence/Halogen risk programme	£ 150,732
ANPR Camera enforcement replacement	£ 92,000
	£ 342,732

Smarter Travel Management - Traffic Management Centre

The Traffic Management Centre(TMC) collects, processes and shares real time travel information to local residents, businesses and communities within Cambridgeshire. In emergency situations the IHMC provides information to ensure that the impact on our transport network is mitigated and managed.

Works	2025/26
Expand our existing Intelligent Transport Systems to provide further integration in delivering transport information to the public and our partners. Provide new facilities into the TMC including additional CCTV coverage and other technology to better inform the public on our highway network conditions	£ 166,747
	£ 166,747

Alliance of local PCs in the Kingsway area, PINS Scoping Opinion, and KSCA



Simon Chandler <wwparishcouncil6@gmail.com>

To Parish Council

Cc Clerk@balsham.net; clerk@bottisham-pc.gov.uk; brinkleyclerk@gmail.com; clerk@burroughgreenparishcouncil.org.uk; Katherine Hyett; clerk@dullingham-pc.org.uk; gthurlowparishclerk@gmail.com; clerk@greatwilbahparishcouncil.gov.uk; clerk@horseheath-pc.gov.uk; enquiries@linton-pc.gov.uk; clerk@littleabington-pc.gov.uk; +9 others

You forwarded this message on 18/03/2025 16:08.

[Click here to download pictures.](#) To help protect your privacy, Outlook prevented automatic download of some pictures in this message.



Mon 17/03/2025 17:04

PC Alliance

Thanks to those of you who have asked me about the PC alliance that I proposed at the joint meeting of parish councils in Balsham on 5th December 2024. I've not yet made any progress on that, having spent all my free time over Christmas working on the scoping EIA response, and since then I've had to complete an important project for my day job. That's now come to an end so I'll soon be able to spend more time on Kingsway solar farm work, and will rekindle the idea of a PC alliance. I'm told that parish councils involved with the Sunnica development found a PC alliance most useful for the statutory consultation (expected Q2-Q3 2025) and examination stage (Q1 2026), so hopefully my tardiness has not caused any problems.

PINS Scoping Opinion

At the end of January I read the official Scoping Opinion published by the planning inspectorate (PINS) which they wrote after reading the comments we sent them on Kingsway's scoping report (with the 14th January deadline). The [full PINS scoping opinion document](#) is very large because it includes an appendix that collates the comments they received from all those they consulted. I've created a [shorter version](#) without that appendix. It's worth a read to see where our hard work over Christmas went, although I have to warn you that you may be disappointed by some of the things that PINS allowed to be scoped-out from the Environmental Impact Assessment (EIA). My despondency at the final opinion was partly why I took some time away to focus on my work.

Encouraged by some answers I received recently from the Greater Cambridge Shared Planning's NSIP team I will be writing to PINS in the next few days to challenge them on some of their decisions. In particular, I'll be asking them to explain their reasoning for scoping-out 'major accidents and disasters' from the EIA. This is despite many of those consulted raising battery energy storage system (BESS) fires as a concern. This included the Health and Safety Executive and the UK Health Security Agency, who said "the applicant should assess, within the environmental statement, the risk to nearby public health and environmental receptors from [BESS fires]". The PINS opinion document appears to justify that omission because of the low likelihood of an accident occurring. This ignores the principles of risk assessment (that includes both likelihood and impact), as recommended by the National Fire Chiefs Council [1] and by the Department for Energy Security & Net Zero [2].

There's no formal mechanism for challenging a PINS opinion, but I think it would be good to get our concerns documented now for future reference.

Kingsway Solar Community Action group

Last week I managed to secure a place for a representative from the Kingsway Solar Community Action (KSCA) group at a cross-party roundtable discussion at Westminster to discuss concerns about the many large-scale solar farms that are currently proposed NSIPs. It was a good opportunity to hear a presentation from [SolarQ](#), a group of citizen-scientists concerned about the lack of an evidence-based spatial plan for the renewable resources, and to talk some more with Catherine Judkins (Say No to Sunnica) and Pippa Heylings, MP for South Cambridgeshire and the Liberal Democrat spokesperson on Energy Security and Net Zero. When we receive the slides from SolarQ we'll put those and the meeting notes on the [KSCA website](#).

KSCA will be holding their AGM in April. I've been nominated to be a member of their committee to liaise with the affected parish councils. If anyone else would like to stand for [that role](#) then please get in touch. In preparation for the AGM KSCA have written a draft constitution and are planning to add a WhatsApp group to communicate with their wider membership in addition to the existing [website](#) and [Facebook group](#), which now has 440 members. I recommend that interested parish councils should choose at least one councillor (or perhaps the clerk) to stay abreast of KSCA activities by monitoring at least one of those communication channels.

Regards,

Simon Chandler
West Wratting Parish Council



EQUIPMENT LOAN AGREEMENT

This Equipment Loan Agreement ("Agreement") is made and entered into on 31 March 2025 by and between:

Lender:

Burwell Museum Trust
Mill Close
Burwell
Cambridgeshire
CB25 0HL

museum@burwellmuseum.org.uk

Borrower:

Burwell Parish Council
Jubilee Reading Room
99 The Causeway
Burwell
CB25 0DU

burwellpc@burwellparishcouncil.gov.uk

Collectively referred to as "Parties".

1. Loan of Equipment

1.1 Description of Equipment: Lender agrees to loan the following Equipment to the Borrower.

Type Mountfield MJ 66 E Ride-On Mower

Art. N. 2T0050483/M16

Serial Number 57033

Documentation Manufactures Operating Manual

1.2 Purpose: The Equipment is loaned for the purpose of the maintenance of the Borrower's community assets.

1.3 Loan Period: The loan period will commence on Friday 04 April 2025 and continue until terminated in writing by either Party. Upon termination the Equipment will be returned to the Lender within 7 working days.

1.4 The loan by the Lender to the Borrower will be free of charge.

2. Delivery and Return

2.1 Delivery: Lender will deliver the Equipment to Borrower at the Burwell Museum on or before the Start Date. The Equipment will be collected by the Borrower.

2.2 Inspection: The Equipment will be delivered in a fully serviceable condition. Upon receipt of the Equipment, Borrower shall complete an inspection and confirm their acceptance of the equipment and its condition. The Borrower will notify Lender of any damage or defects within 7 business days. Failure to notify within this period shall be deemed as acceptance of the Equipment in good condition.

2.3 Return: Borrower shall return the Equipment to the Lender at the Burwell Museum on a mutually agreed date in the same condition as received, normal wear and tear excepted.

3. Maintenance, Repair and Storage

3.1 The Borrower will be responsible for all routine maintenance in accordance with the manufactures recommendations and all repairs that may be required during the period of the loan. The Borrower will provide secure storage for the equipment for the duration of the loan

4. Liability and insurance.

4.1 During the period of the loan the Borrower will be responsible for damage, loss, or theft of the Equipment.

4.2 The Borrower will for the duration of the loan insure the equipment for damage, loss, or theft. The agreed value of the equipment is **£1,500**.

5. Termination

5.1 Either party may terminate this agreement in which case the equipment will be returned in accordance with Section 2.3.

6. Signatures

On Behalf Of Burwell Museum Trust

Name Clive Leach (Trustee)

Signature 

Date 31 March 2025

On Behalf Of Burwell Parish Council

Name.....

Signature.....

Date.....